

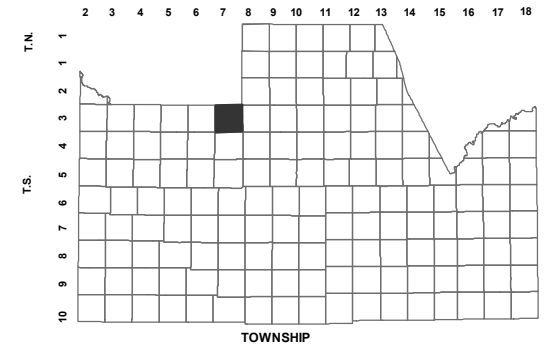
516-01_3

SW SEC. 11 T.03S. R.07E.

SAN TAN HEIGHTS PARCEL C-7

CAB. G - SLD. 017

LOCATION MAPS
R.E.



HUNT HWY		EMPIRE BLVD.			
6	5	4	3	2	1
7	8	9	10	11	12
18	17	16	15	14	13
19	20	21	22	23	24
30	29	28	27	26	25
31	32	33	34	35	36

SECTION



Revised: 2/22/2018

By: **MBG**



PINAL COUNTY

WIDE OPEN OPPORTUNITY

Pinal County Assessor

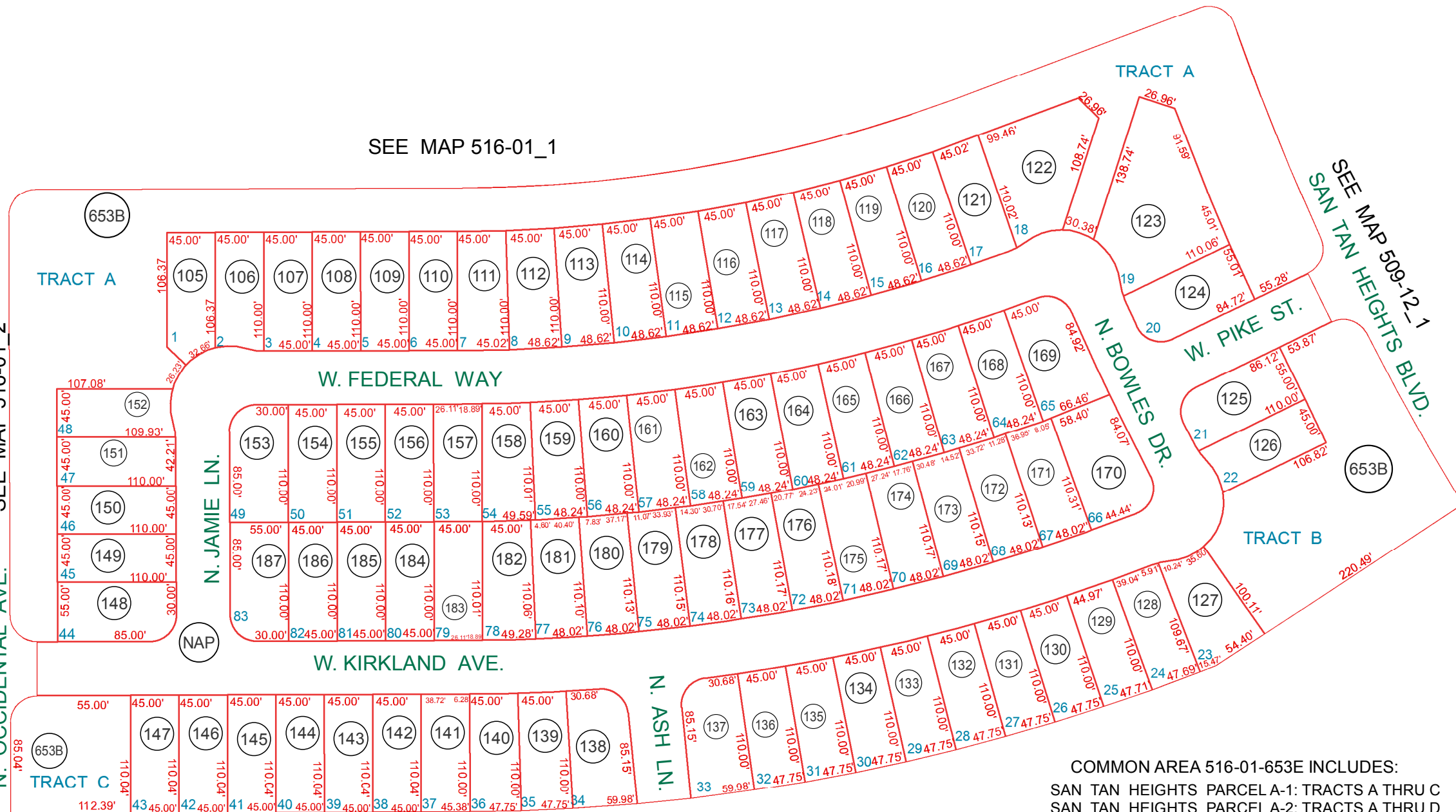
THIS MAP DOES NOT REPRESENT A SURVEY. NO LIABILITY IS ASSUMED FOR THE ACCURACY OF THE DATA DELINEATED HEREIN, EITHER EXPRESSED OR IMPLIED BY PINAL COUNTY OR ITS EMPLOYEES. THIS MAP IS COMPILED FROM OFFICIAL RECORDS, INCLUDING PLATS, SURVEYS, RECORDED DEEDS AND CONTRACTS, AND ONLY CONTAINS INFORMATION REQUIRED FOR THE PINAL COUNTY ASSESSOR'S OFFICE PURPOSES.

SEE MAP 516-01_1

SEE MAP 509-12_1
SAN TAN HEIGHTS BLVD.

SEE MAP 516-01_5

SEE MAP 516-01_2
N. OCCIDENTAL AVE.



COMMON AREA 516-01-653E INCLUDES:

- SAN TAN HEIGHTS PARCEL A-1: TRACTS A THRU C
- SAN TAN HEIGHTS PARCEL A-2: TRACTS A THRU D
- SAN TAN HEIGHTS PARCEL A-3: TRACTS A THRU C
- SAN TAN HEIGHTS PARCEL A-4: TRACTS A THRU C
- SAN TAN HEIGHTS PARCEL A-5: TRACTS A THRU C
- SAN TAN HEIGHTS PARCEL A-6: TRACTS A THRU C
- SAN TAN HEIGHTS PARCEL A-7: TRACTS A THRU C
- SAN TAN HEIGHTS PARCEL A-8: TRACTS A THRU D
- SAN TAN HEIGHTS PARCEL A-9: TRACTS A THRU C
- SAN TAN HEIGHTS PARCEL C-6: TRACTS A & B
- SAN TAN HEIGHTS PARCEL C-8: TRACTS A THRU C
- SAN TAN HEIGHTS PARCEL C-10: TRACTS A THRU C
- SAN TAN HEIGHTS PARCEL C-11: TRACTS A THRU C
- SAN TAN HEIGHTS PARCEL C-13: TRACT A

SAN TAN HEIGHTS PARCEL C-7: TRACTS A THRU C ARE UNDER APN 516-01-653B
 SAN TAN HEIGHTS PARCEL C-9: TRACTS A THRU C ARE UNDER APN 516-01-653C
 SAN TAN HEIGHTS PARCEL C-12: TRACTS A THRU F ARE UNDER APN 516-01-653D