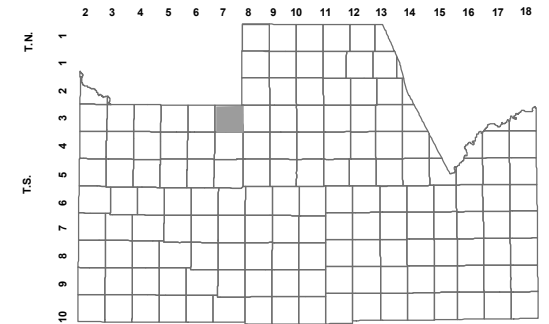


516-01_7

SW SEC. 11 T.03S. R.07E.

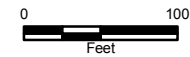
SAN TAN HEIGHTS
PARCELS C-11
CAB G - SLD 024

LOCATION MAPS
R.E.



TOWNSHIP

						EMPIRE BLVD					
6	5	4	3	2	1						
SCISSMAN RD.		WILDHORSE DR.		ELSWORTH AVE.		THOMPSON RD.		HULL TUNN.			
7	8	9	10	11	12						
			ROBERTS RD.								
18	17	16	15	14	13						
			GAIL RD.								
19	20	21	22	23	24						
			JUDD RD.								
30	29	28	27	26	25						
			ROYCE RD.								
31	32	33	34	35	36						
						SECTION					



Revised: 2/22/2018

By: **MBG**



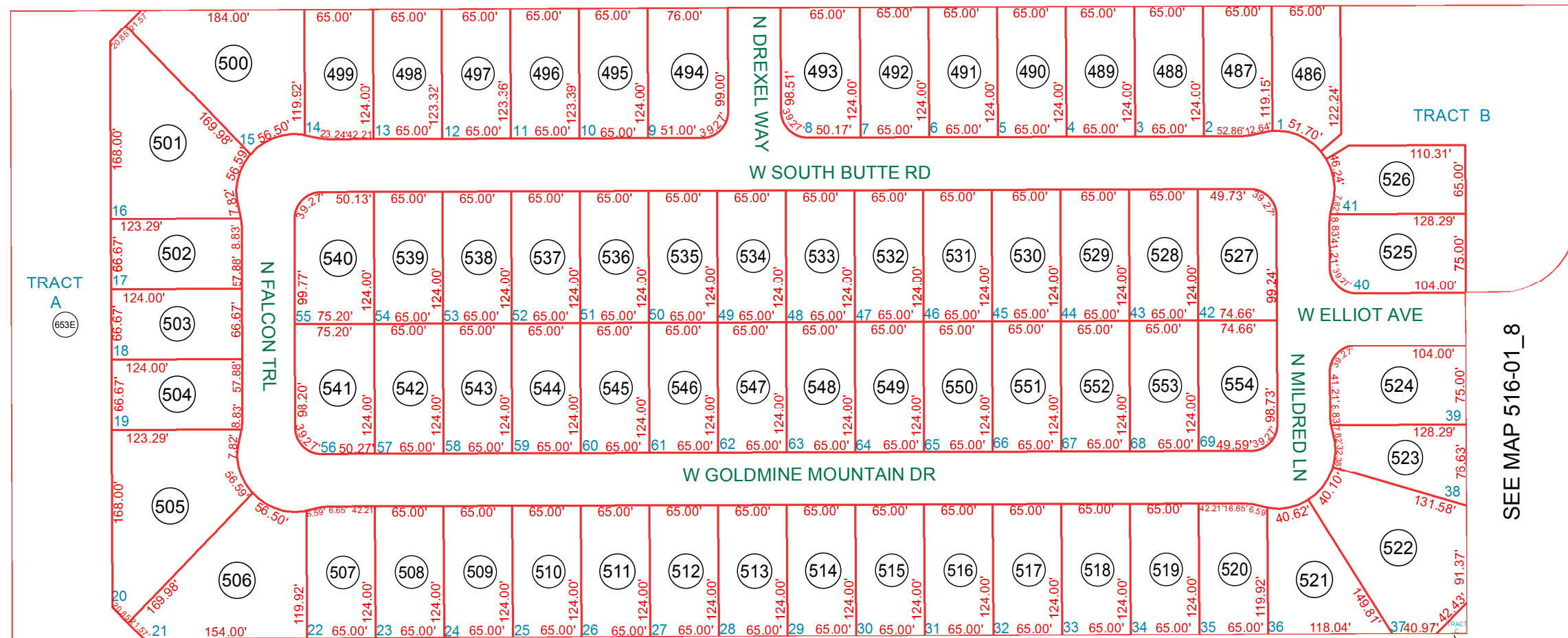
PINAL COUNTY

WIDE OPEN OPPORTUNITY

Pinal County Assessor

THIS MAP DOES NOT REPRESENT A SURVEY. NO LIABILITY IS ASSUMED FOR THE ACCURACY OF THE DATA DELINEATED HEREIN, EITHER EXPRESSED OR IMPLIED BY PINAL COUNTY OR ITS EMPLOYEES. THIS MAP IS COMPILED FROM OFFICIAL RECORDS, INCLUDING PLATS, SURVEYS, RECORDED DEEDS AND CONTRACTS, AND ONLY CONTAINS INFORMATION REQUIRED FOR THE PINAL COUNTY ASSESSOR'S OFFICE PURPOSES.

SEE MAP 516-01_6



SEE MAP 516-01_9

TRACT C

COMMON AREA 516-01-653E INCLUDES:

- SAN TAN HEIGHTS PARCEL A-1: TRACTS A THRU C
- SAN TAN HEIGHTS PARCEL A-2: TRACTS A THRU D
- SAN TAN HEIGHTS PARCEL A-3: TRACTS A THRU C
- SAN TAN HEIGHTS PARCEL A-4: TRACTS A THRU C
- SAN TAN HEIGHTS PARCEL A-5: TRACTS A THRU C
- SAN TAN HEIGHTS PARCEL A-6: TRACTS A THRU C
- SAN TAN HEIGHTS PARCEL A-7: TRACTS A THRU C
- SAN TAN HEIGHTS PARCEL A-8: TRACTS A THRU D
- SAN TAN HEIGHTS PARCEL A-9: TRACTS A THRU C
- SAN TAN HEIGHTS PARCEL C-6: TRACTS A & B
- SAN TAN HEIGHTS PARCEL C-8: TRACTS A THRU C
- SAN TAN HEIGHTS PARCEL C-10: TRACTS A THRU C
- SAN TAN HEIGHTS PARCEL C-11: TRACTS A THRU C
- SAN TAN HEIGHTS PARCEL C-13: TRACT A

SAN TAN HEIGHTS PARCEL C-7: TRACTS A THRU C ARE UNDER APN 516-01-653B
SAN TAN HEIGHTS PARCEL C-9: TRACTS A THRU C ARE UNDER APN 516-01-653C
SAN TAN HEIGHTS PARCEL C-12: TRACTS A THRU F ARE UNDER APN 516-01-653D

SEE MAP 509-02_1

SEE MAP 516-01_8