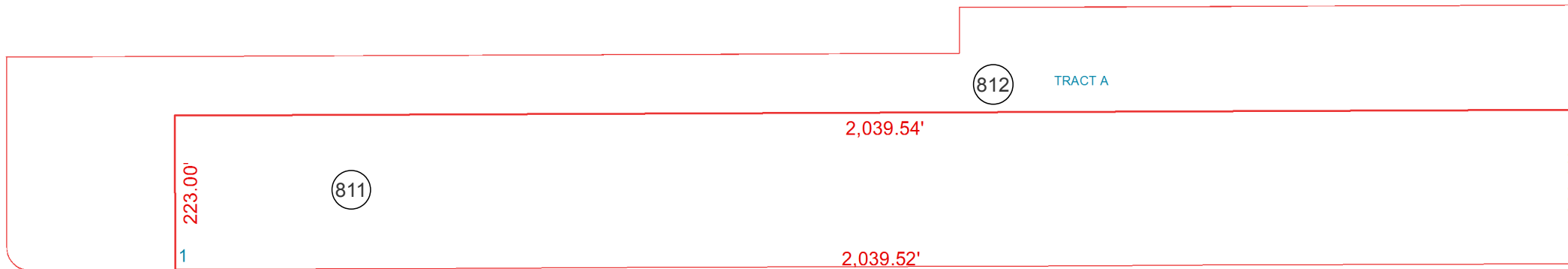


SEE MAP 516-01_7

SEE MAP 509-02_1
N THOMPSON RD



W ROBERTS RD

SEE MAP 509-95_10

SAN TAN HEIGHTS PARCEL C-7: TRACTS A THRU C ARE UNDER APN 516-01-653B
 SAN TAN HEIGHTS PARCEL C-9: TRACTS A THRU C ARE UNDER APN 516-01-653C
 SAN TAN HEIGHTS PARCEL C-12: TRACTS A THRU F ARE UNDER APN 516-01-653D

SEE MAP 509-15

COMMON AREA 516-01-653E INCLUDES:
 SAN TAN HEIGHTS PARCEL A-1: TRACTS A THRU C
 SAN TAN HEIGHTS PARCEL A-2: TRACTS A THRU D
 SAN TAN HEIGHTS PARCEL A-3: TRACTS A THRU C
 SAN TAN HEIGHTS PARCEL A-4: TRACTS A THRU C
 SAN TAN HEIGHTS PARCEL A-5: TRACTS A THRU C
 SAN TAN HEIGHTS PARCEL A-6: TRACTS A THRU C
 SAN TAN HEIGHTS PARCEL A-7: TRACTS A THRU C
 SAN TAN HEIGHTS PARCEL A-8: TRACTS A THRU D
 SAN TAN HEIGHTS PARCEL A-9: TRACTS A THRU C
 SAN TAN HEIGHTS PARCEL A-10: TRACTS A THRU C
 SAN TAN HEIGHTS PARCEL A-11: TRACTS A THRU C
 SAN TAN HEIGHTS PARCEL A-12: TRACTS A THRU C
 SAN TAN HEIGHTS PARCEL A-13: TRACT A

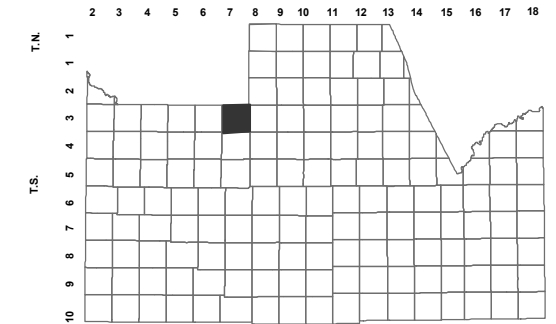
BOOK - MAP

516-01_9

SW SEC. 11 T.03S. R.07E.

RE-PLAT OF SAN TAN HEIGHTS
 PARCEL C12 TRACT F
 & C-13
 2017-092728

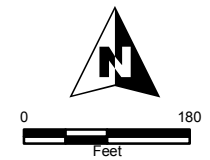
LOCATION MAPS
R.E.



TOWNSHIP

6	5	4	3	2	1
7	8	9	10	11	12
18	17	16	15	14	13
19	20	21	22	23	24
30	29	28	27	26	25
31	32	33	34	35	36

SECTION



Revised: 2/22/2018

By: **MBG**



PINAL COUNTY
 WIDE OPEN OPPORTUNITY

Pinal County Assessor

THIS MAP DOES NOT REPRESENT A SURVEY. NO LIABILITY IS ASSUMED FOR THE ACCURACY OF THE DATA DELINEATED HEREIN, EITHER EXPRESSED OR IMPLIED BY PINAL COUNTY OR ITS EMPLOYEES. THIS MAP IS COMPILED FROM OFFICIAL RECORDS, INCLUDING PLATS, SURVEYS, RECORDED DEEDS AND CONTRACTS, AND ONLY CONTAINS INFORMATION REQUIRED FOR THE PINAL COUNTY ASSESSOR'S OFFICE PURPOSES.