

SEC. 14, TN.4S RG.3E

SEE MAP 512-02_1

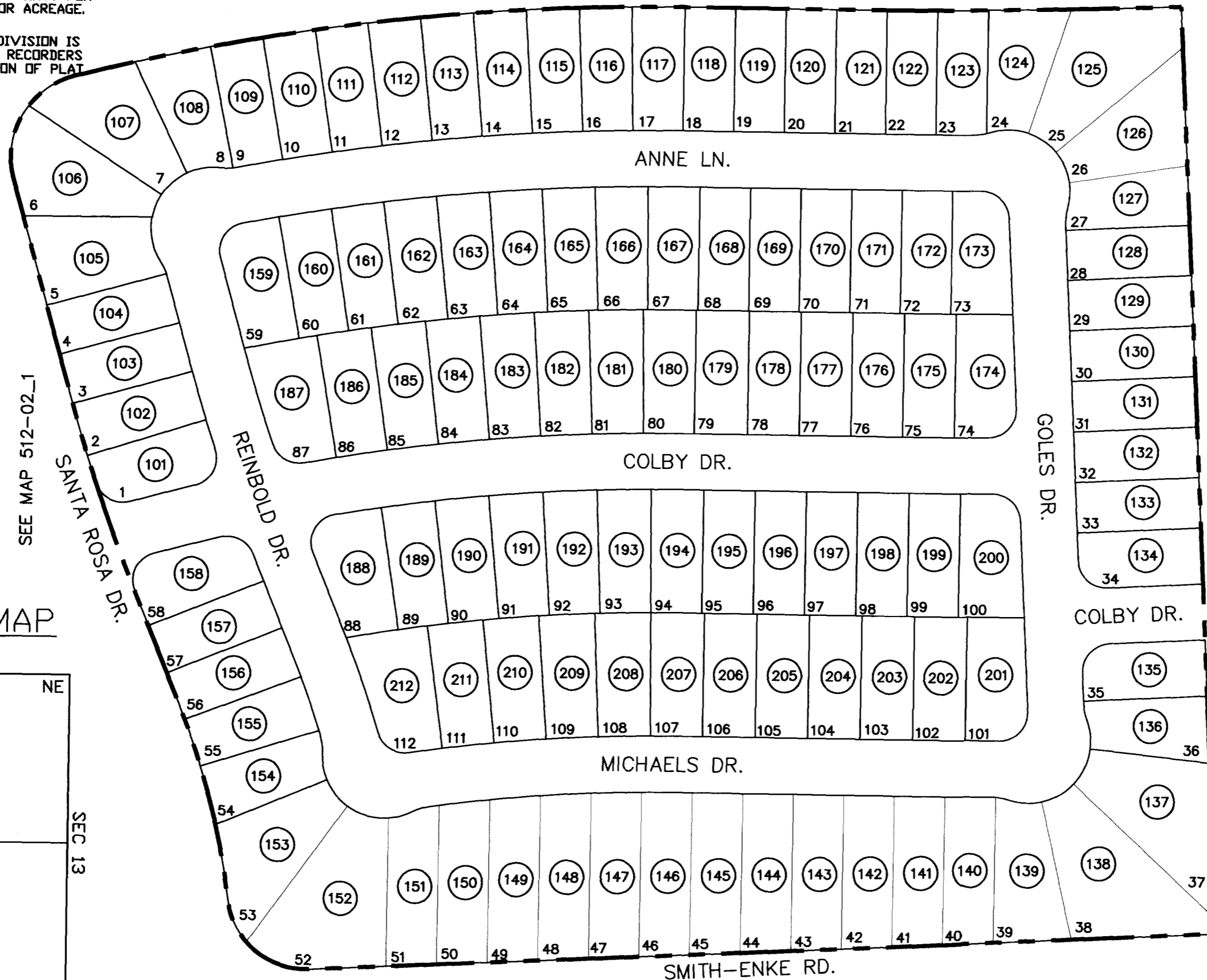
512-02_2

THIS MAP IS FOR TAX PURPOSES ONLY.
THIS OFFICE WILL NOT ASSUME LIABILITY FOR
REPRESENTATION, MEASUREMENTS OR ACREAGE.

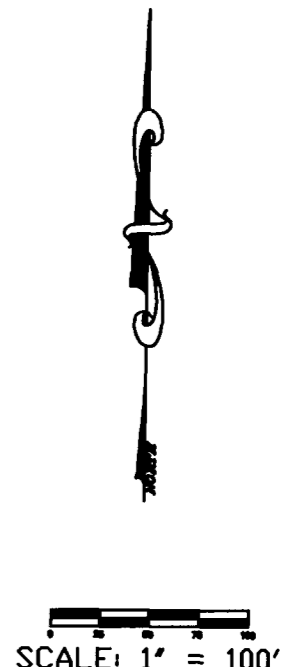
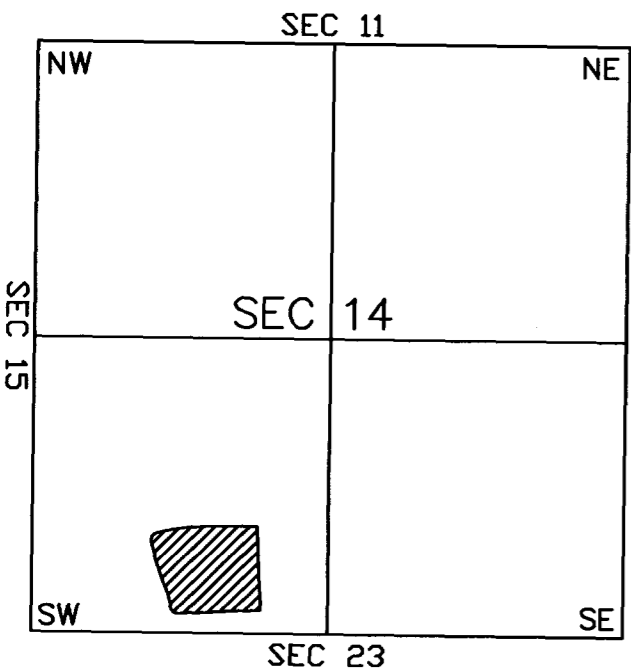
THE ORIGINAL PLAT OF THIS SUBDIVISION IS
ON FILE WITH THE PINAL COUNTY RECORDERS
OFFICE, FOR COMPLETE INFORMATION OF PLAT
AND CC&R's CALL (520) 868-7100.

RANCHO EL DORADO PRKWY.

PHASE 2 PARCEL 7
RANCHO EL DORADO
CAB. "D" - SLD. 073



VICINITY MAP



11-25-2003

SEE MAP 512-02_1

PINAL COUNTY ASSESSORS MAP