

SEC. 23 TN.4S RG.3E

SEE MAP 512-02
SMITH - ENKE RD

512-07
3/6

PROVINCE
PARCEL 4
CAB E - SLD 002

AREA CODE
0000

SPECIAL DISTRICTS
00000
00000

THIS MAP IS FOR TAX PURPOSES ONLY.
THIS OFFICE WILL NOT ASSUME LIABILITY FOR
REPRESENTATION, MEASUREMENTS OR ACREAGE.

THE ORIGINAL PLAT OF THIS SUBDIVISION IS
ON FILE WITH THE PINAL COUNTY RECORDERS
OFFICE, FOR COMPLETE INFORMATION OF PLAT
AND CC&R's CALL (520) 868-7100.

CANCELED PARCEL
512-07-012

SEE MAP 512-07_1

SEE MAP 512-07_1



SCALE: 1" = 150'

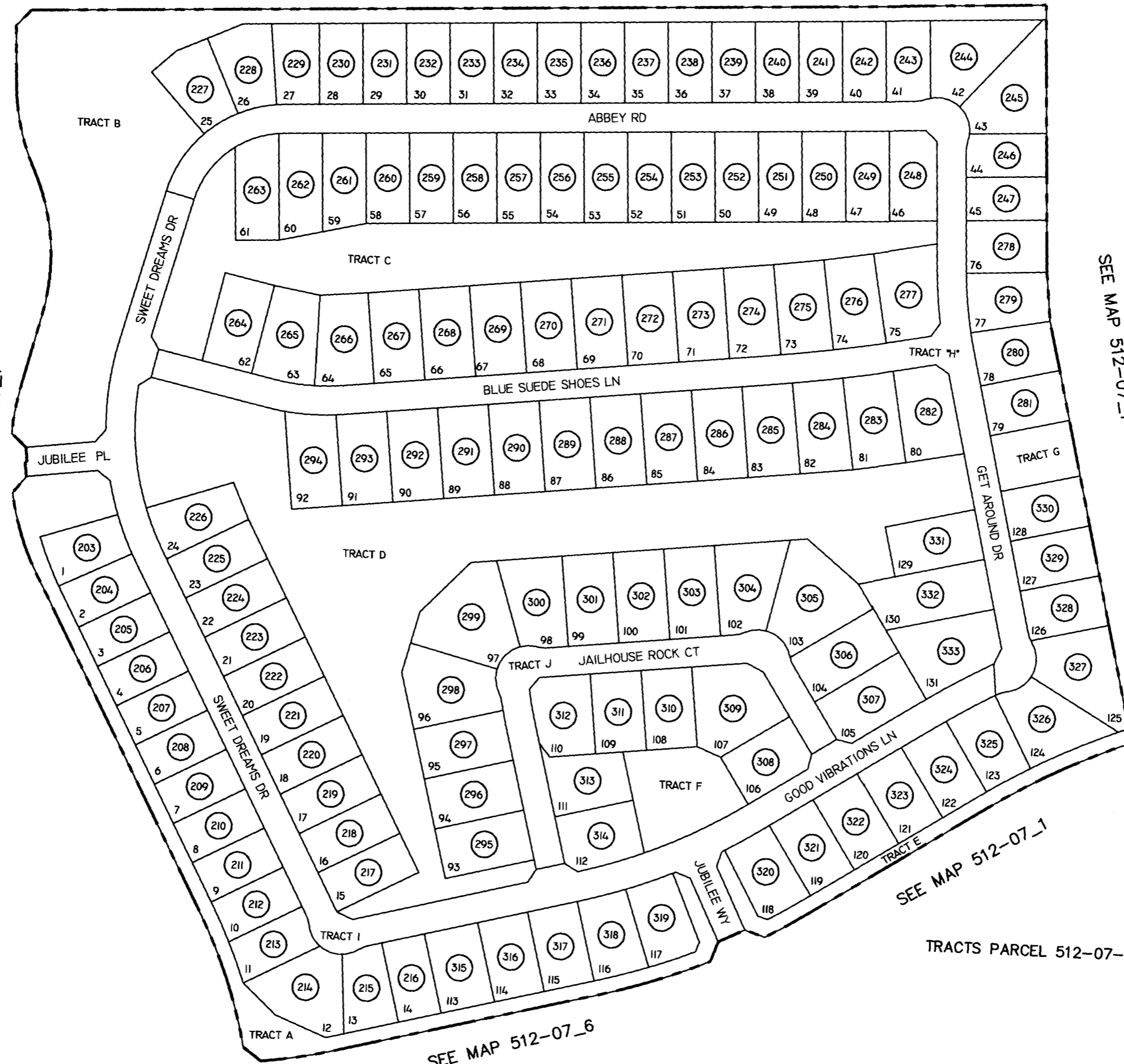
10-24-2003

SEE MAP 512-07_1

TRACTS PARCEL 512-07-721

SEE MAP 512-07_6

PINAL COUNTY ASSESSORS MAP



VICINITY MAP

