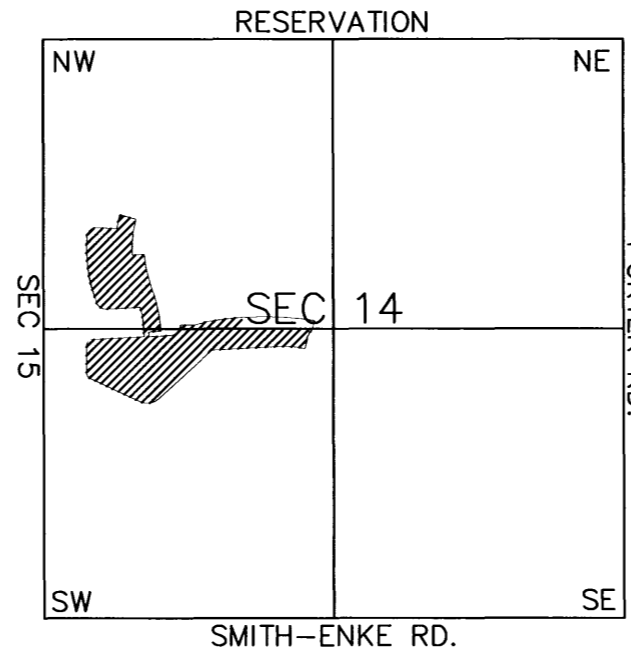


SEC. 14 TN.4S RG.3E

512-15

VICINITY MAP



RANCHO EL DORADO  
PH. 2 - PAR 14  
CAB. D - SLD. 132

THE ORIGINAL PLAT OF THIS SUBDIVISION IS ON FILE WITH THE PINAL COUNTY RECORDERS OFFICE, FOR COMPLETE INFORMATION OF PLAT AND CC&R's CALL (520) 868-7100.

AREA CODE  
0000  
SPECIAL DISTRICTS  
00000  
00000

SEE MAP 512-15

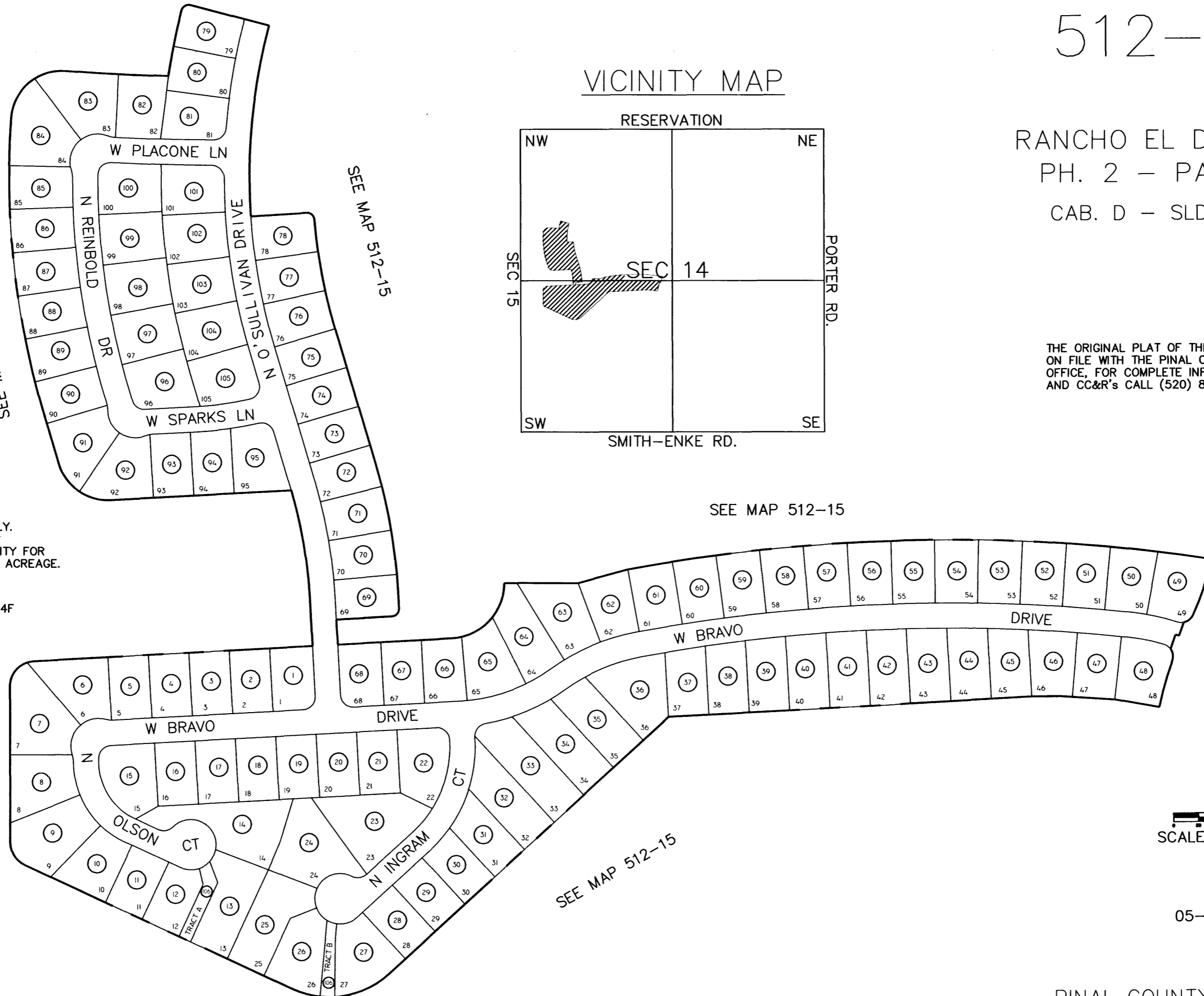
SEE MAP 512-15

SEE MAP 512-15

SEE MAP 512-15

THIS MAP IS FOR TAX PURPOSES ONLY.  
THIS OFFICE WILL NOT ASSUME LIABILITY FOR REPRESENTATION, MEASUREMENTS OR ACREAGE.

CANCELED PARCELS  
512-02-001B, 002E, 002F, 003C, 004F



SEE MAP 512-15

SCALE: 1" = 200'

05-09-2003