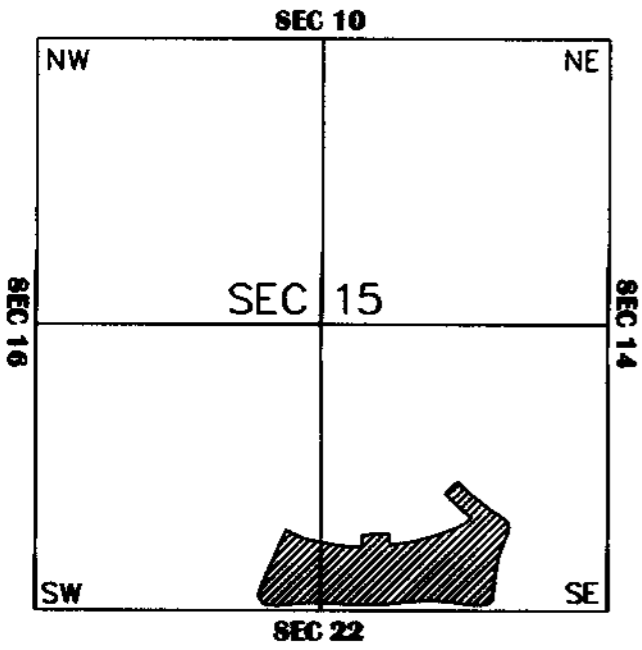


SEC. 15, TN.4S RG.3E

VICINITY MAP



THIS MAP IS FOR TAX PURPOSES ONLY
THIS OFFICE WILL NOT ASSUME LIABILITY FOR
REPRESENTATION, MEASUREMENTS OR ACREAGE.

THE ORIGINAL PLAT OF THIS SUBDIVISION IS
ON FILE WITH THE PINAL COUNTY RECORDERS
OFFICE, FOR COMPLETE INFORMATION OF PLAT
AND C&R's CALL (520) 868-7100.

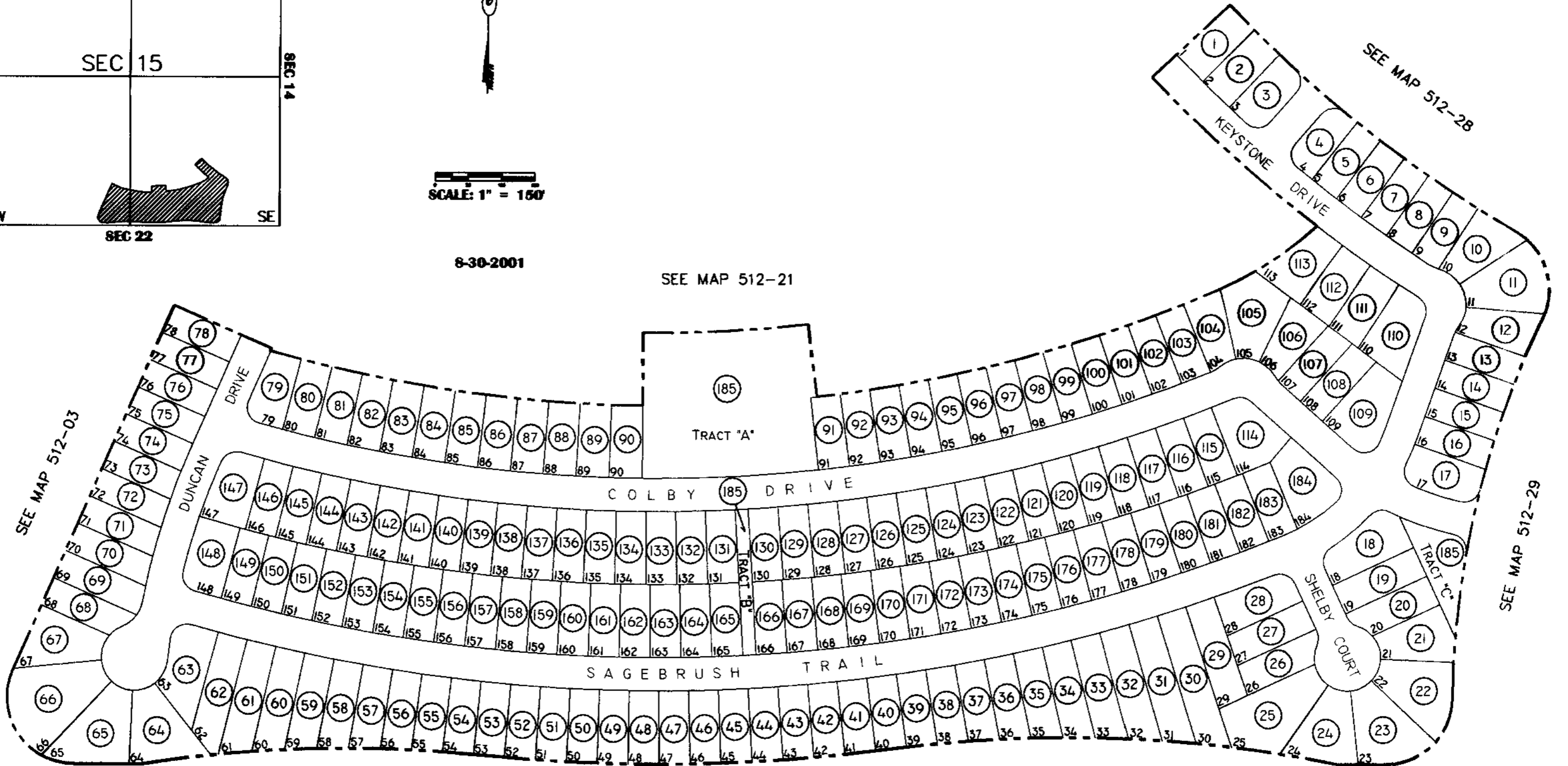
SCALE: 1" = 150'

8-30-2001

SEE MAP 512-21

512-20

**PARCEL 2A @
RANCHO EL DORADO
CAB."C" - SLD.184**



SEE MAP 510-21

PINAL COUNTY ASSESSORS MAP