

SEC. NE 21 TN.4S RG.3E

512-30
7/7

ACACIA CROSSINGS
PARCEL 7

CAB "D" SLIDE 111

AREA CODE
2019

SPECIAL DISTRICTS
16602
00000

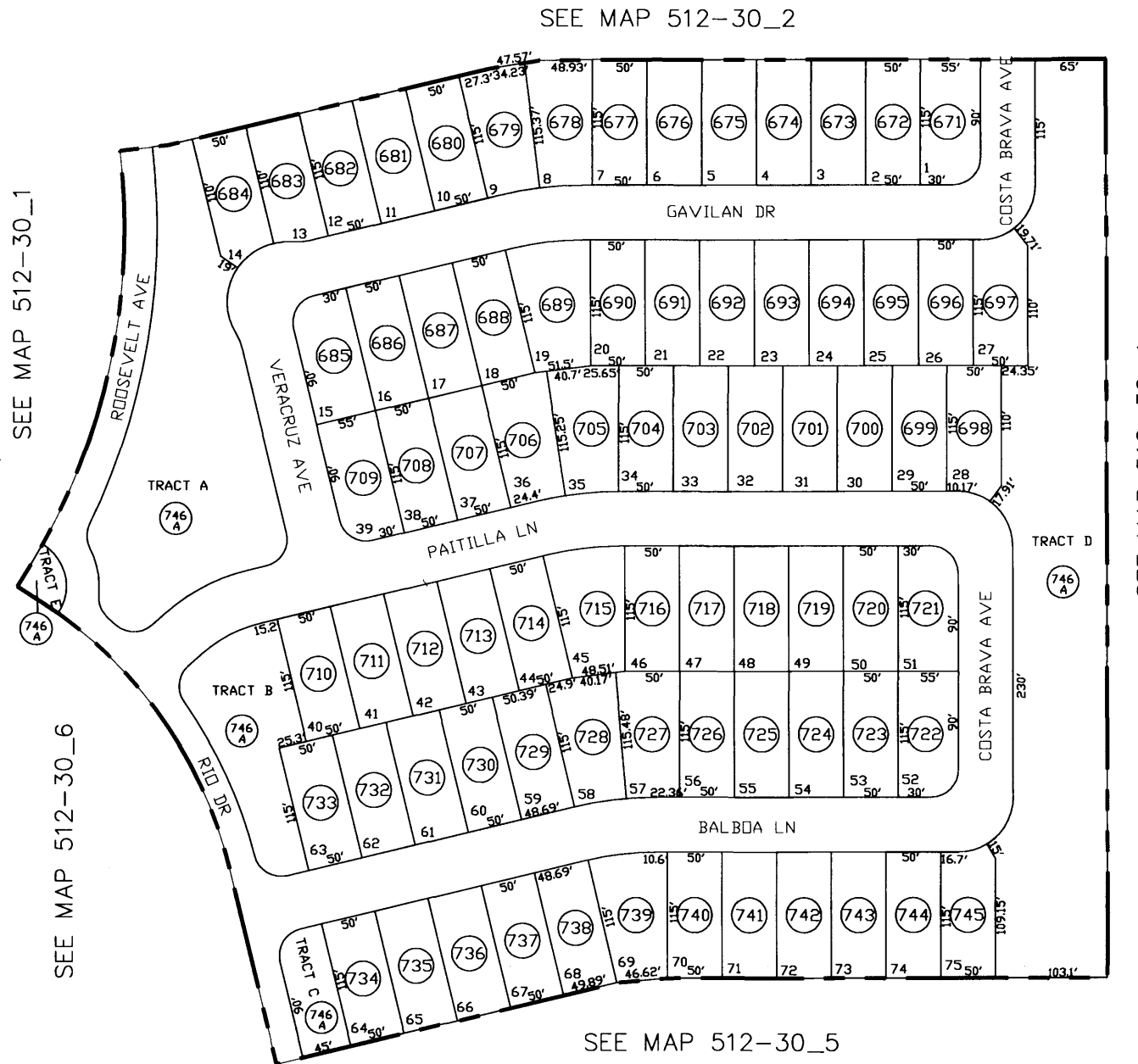
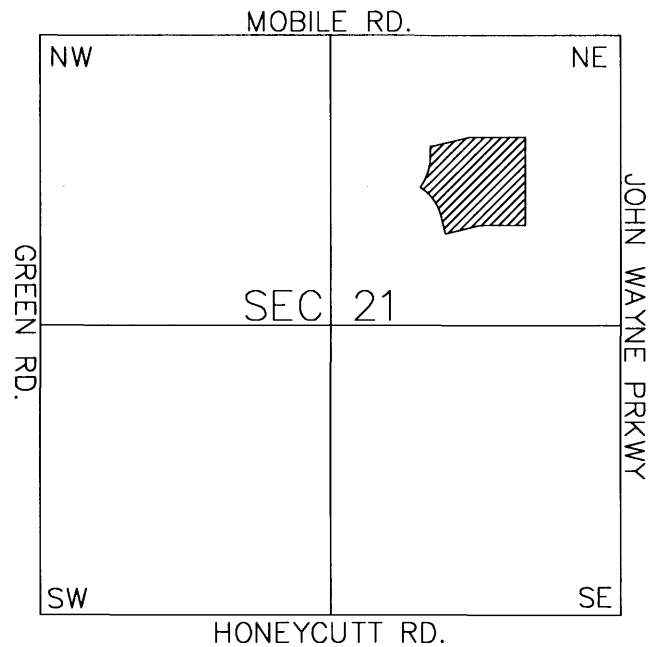
THIS MAP IS FOR TAX PURPOSES ONLY.

THIS OFFICE WILL NOT ASSUME LIABILITY FOR REPRESENTATION, MEASUREMENTS OR ACREAGE.

THE ORIGINAL PLAT OF THIS SUBDIVISION IS ON FILE WITH THE PINAL COUNTY RECORDERS OFFICE, FOR COMPLETE INFORMATION OF PLAT AND CC&R's CALL (520) 868-7100.

PARCELS CANCELED
510-17-001A, 002C, 510-21-011C

VICINITY MAP



SCALE: 1" = 150'

12-22-2002