

SEC. 26, TN.4S RG.3E

512-40\_6

RIVER BIRCH  
PARCEL 6 AT GLENNWILDE

CAB E - SLD 184

SEE MAP 512-40\_5

THIS MAP IS FOR TAX PURPOSES ONLY.  
THIS OFFICE WILL NOT ASSUME LIABILITY FOR  
REPRESENTATION, MEASUREMENTS OR ACREAGE.

THE ORIGINAL PLAT OF THIS SUBDIVISION IS  
ON FILE WITH THE PINAL COUNTY RECORDERS  
OFFICE, FOR COMPLETE INFORMATION OF PLAT  
AND CC&R's CALL (520) 868-7100.

CANCELED PARCEL #  
510-24-001A

TRACTS UNDER PARCEL #  
512-40-712

SEE MAP 510-24\_1

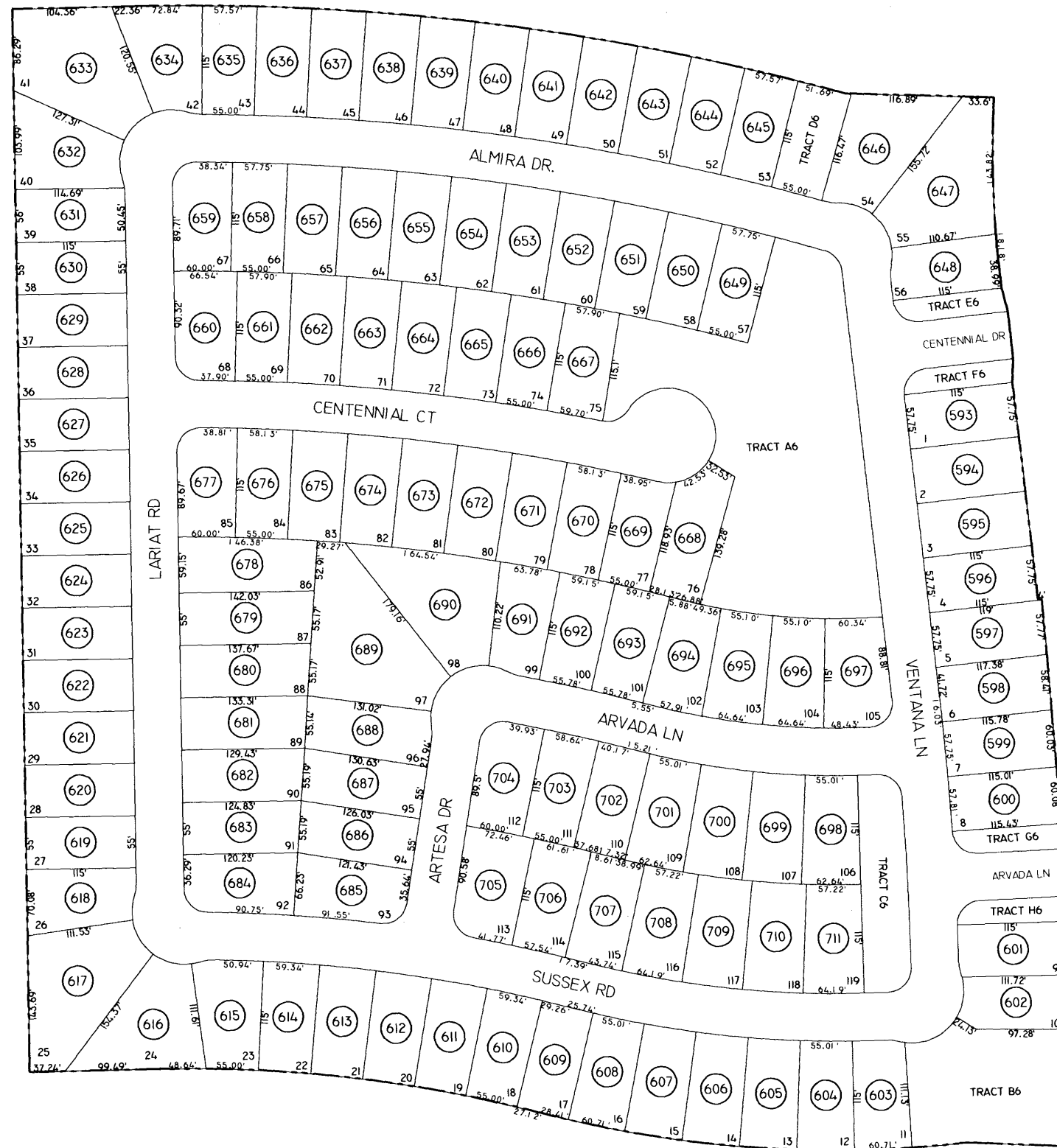
ALLEN STEPHENS PKWY

SEE MAP 510-24\_2

VICINITY MAP

6	5	4	3	2	1
7	8	9	10	11	12
18 HWY 238 BOWLIN RD	17	16	15	14	13
19	20	21	22	23	24
30	29	28	27	26	25
31	32	33	34	35	36

MARIQUITA HWY 247  
 HWY 238 / SMITH ENKE RD  
 McDAVID RD / HONEYCUTT RD  
 GREEN RD  
 JOHN WAYNE PKWY  
 BOWLIN RD  
 GRANDE HWY 238



SEE MAP 512-41\_1



SCALE: 1" = 150'

03-25-2005

PINAL COUNTY ASSESSORS MAP