

ALL TRACTS (A THRU D) ARE UNDER PARCEL: 512-42-726

SEE MAP 510-71\_2

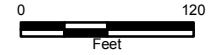
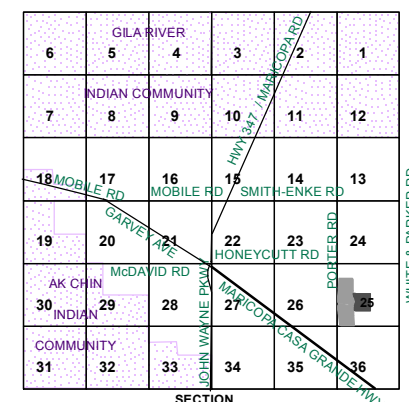
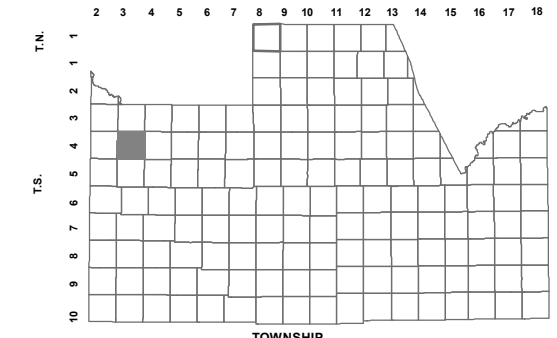
SEE MAP 510-71\_1

BOOK - MAP

# 512-42\_5

**NE SW SEC. 25 T.04S. R.03E.**  
**CIMMARON AT GLENNWILDE**  
**PARCEL 17: CABINET E - SLIDE 195**  
**GLENNWILDE PARCEL 17 REPLAT:**  
**2009-117628**  
**REPLAT OF GLENNWILDE**  
**PARCEL 17 REPLAT: 2016-044010**

LOCATION MAPS



Revised: 12/21/2016

By: MBG



**PINAL COUNTY**  
*wide open opportunity*

**Pinal County Assessor**

THIS MAP DOES NOT REPRESENT A SURVEY. NO LIABILITY IS ASSUMED FOR THE ACCURACY OF THE DATA DELINEATED HEREIN, EITHER EXPRESSED OR IMPLIED BY PINAL COUNTY OR ITS EMPLOYEES. THIS MAP IS COMPILED FROM OFFICIAL RECORDS, INCLUDING PLATS, SURVEYS, RECORDED DEEDS AND CONTRACTS, AND ONLY CONTAINS INFORMATION REQUIRED FOR THE PINAL COUNTY ASSESSOR'S OFFICE PURPOSES.