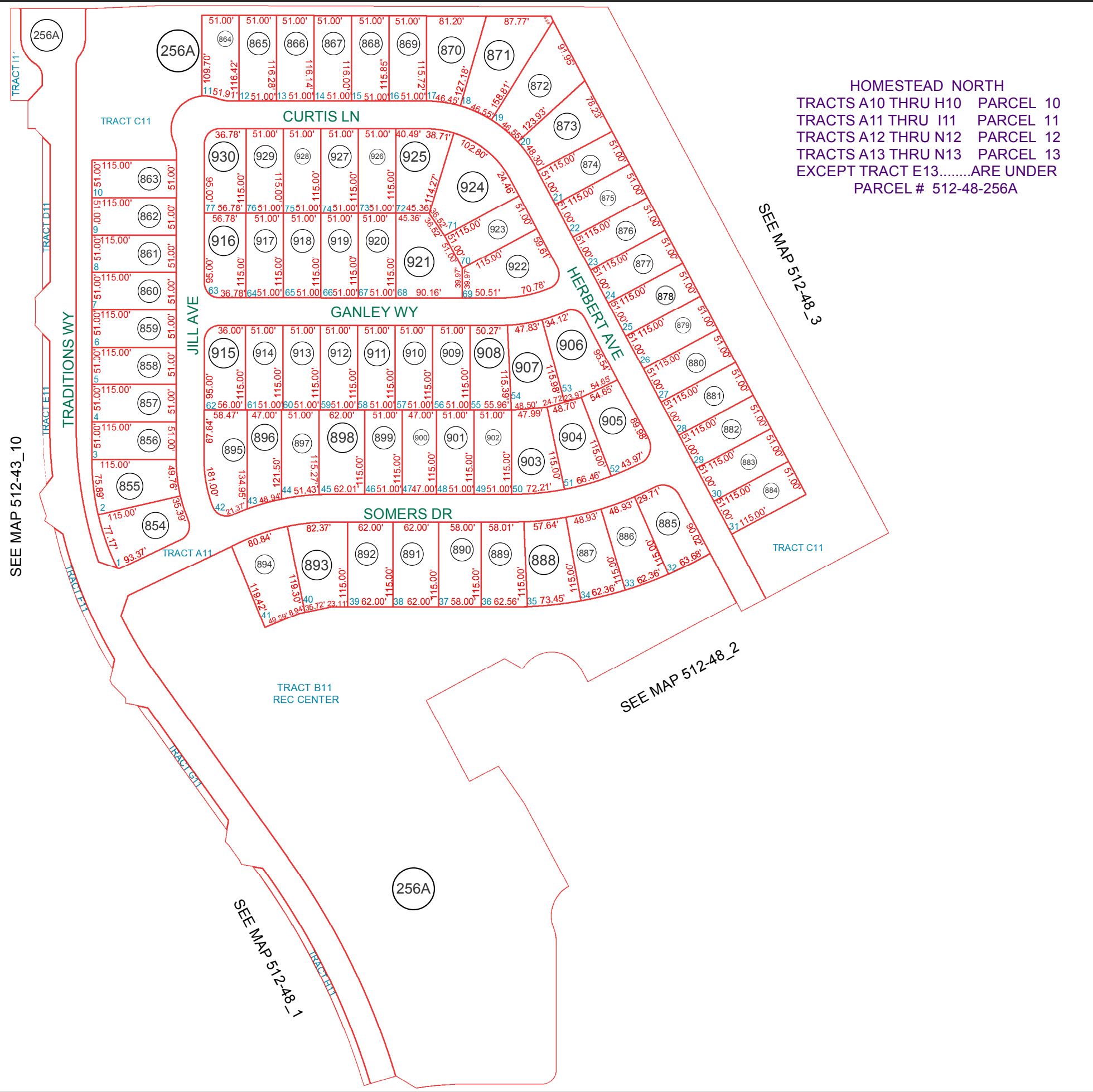


SEE MAP 512-43_7
 HOMESTEAD DR

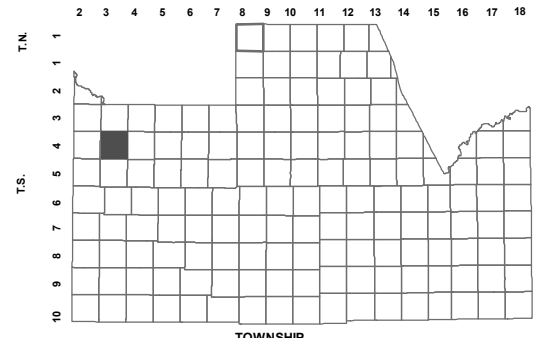


HOMESTEAD NORTH
 TRACTS A10 THRU H10 PARCEL 10
 TRACTS A11 THRU I11 PARCEL 11
 TRACTS A12 THRU N12 PARCEL 12
 TRACTS A13 THRU N13 PARCEL 13
 EXCEPT TRACT E13.....ARE UNDER
 PARCEL # 512-48-256A

BOOK - MAP
512-43_11

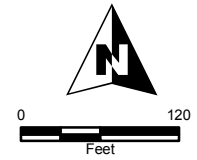
SW SEC. 24 T.04S. R.03E.
 PARCEL 11 AT HOMESTEAD NORTH:
 CAB F - SLD 143

LOCATION MAPS
 R.E.



6	5	4	3	2	1
7	8	9	10	11	12
17	16	15	14	13	12
19	20	21	22	23	24
30	29	28	27	26	25
31	32	33	34	35	36

SECTION



Revised: 9/28/2018

By: **TH**



PINAL COUNTY
 WIDE OPEN OPPORTUNITY

Pinal County Assessor

THIS MAP DOES NOT REPRESENT A SURVEY. NO LIABILITY IS ASSUMED FOR THE ACCURACY OF THE DATA DELINEATED HEREIN, EITHER EXPRESSED OR IMPLIED BY PINAL COUNTY OR ITS EMPLOYEES. THIS MAP IS COMPILED FROM OFFICIAL RECORDS, INCLUDING PLATS, SURVEYS, RECORDED DEEDS AND CONTRACTS, AND ONLY CONTAINS INFORMATION REQUIRED FOR THE PINAL COUNTY ASSESSOR'S OFFICE PURPOSES.

SEE MAP 512-48_2