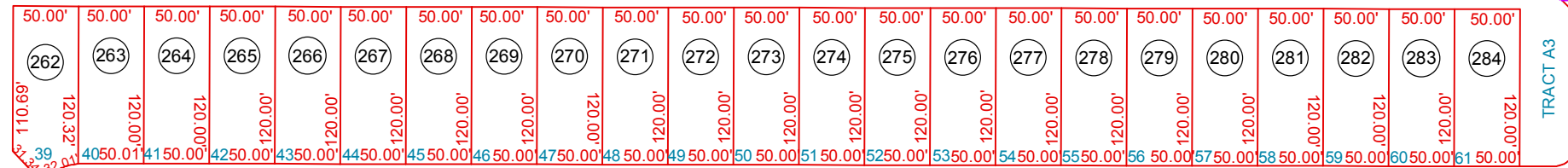


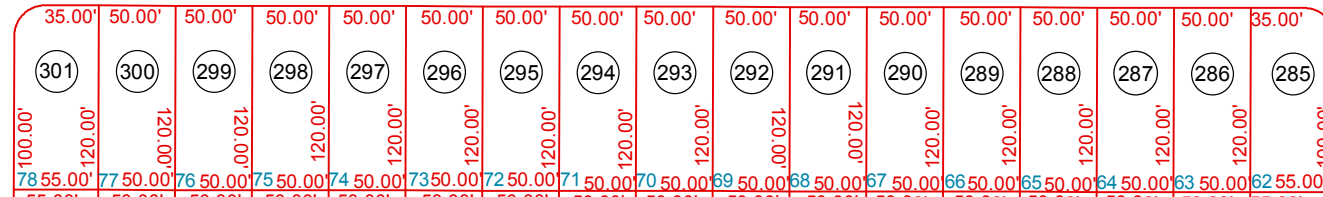
SEE MAP 512-07_1

SEE MAP 510-12_3

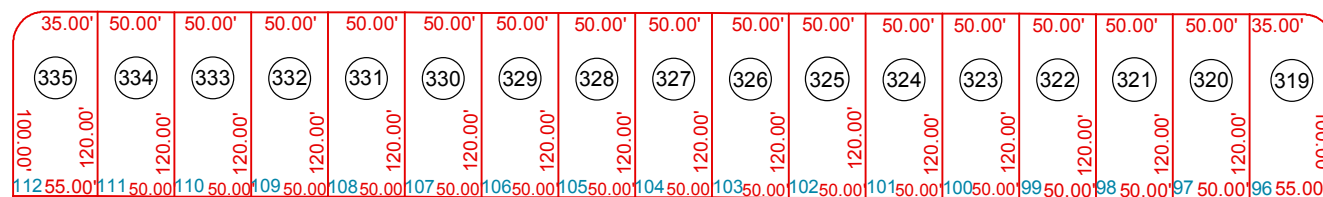
SMITH-ENKE RD



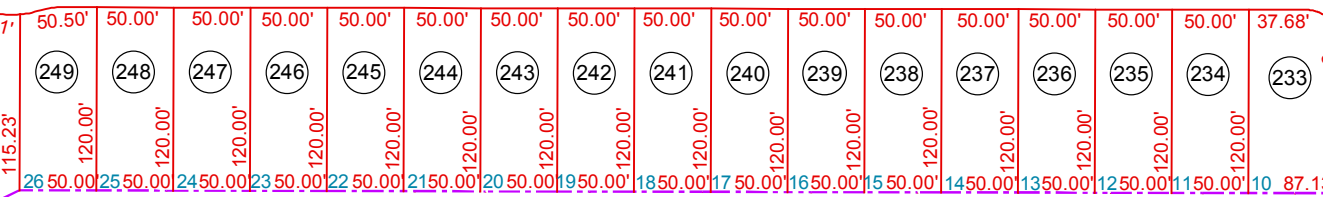
HAYDEN DR



THORNBERRY LN



SANDERS WY



SEE MAP 512-43_5

512-43-931B:

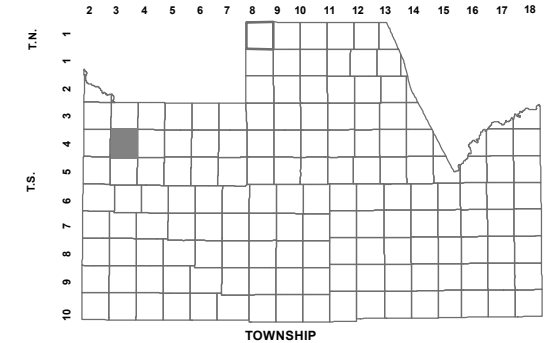
- PCL 1 @ HOMESTEAD NORTH: TRACTS A1 THRU C1;
 - PCL 2 @ HOMESTEAD NORTH: TRACTS A2 THRU F2
 - PCL 3 @ HOMESTEAD NORTH: TRACT A3;
 - PCL 4 @ HOMESTEAD NORTH: TRACTS A4 THRU D4
 - PCL 5 @ HOMESTEAD NORTH: TRACTS B5 THRU E5;
 - PCL 6 @ HOMESTEAD NORTH: TRACTS A6 THRU C6
 - PCL 7 @ HOMESTEAD NORTH: TRACTS A7 THRU G7;
 - PCL 9 @ HOMESTEAD NORTH: TRACTS A9 THRU D9
- HOMESTEAD DRIVE, COMMON AREA TRACTS AND CHURCH SITE AT HOMESTEAD NORTH: TRACTS A, C THRU K AND M THRU O

BOOK - MAP

512-43_4

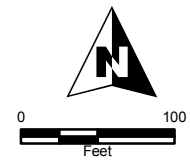
NW SEC. 24 T.04S. R.03E.
 PARCEL 3 AT HOMESTEAD NORTH:
 CAB F - SLD 136

LOCATION MAPS
R.E.



6	5	4	3	2	1
7	8	9	10	11	12
17	16	15	14	13	12
19	20	21	22	23	24
30	29	28	27	26	25
31	32	33	34	35	36

SECTION



Revised: 3/10/2015

By: MBG



PINAL COUNTY
wide open opportunity

Pinal County Assessor

THIS MAP DOES NOT REPRESENT A SURVEY. NO LIABILITY IS ASSUMED FOR THE ACCURACY OF THE DATA DELINEATED HEREIN, EITHER EXPRESSED OR IMPLIED BY PINAL COUNTY OR ITS EMPLOYEES. THIS MAP IS COMPILED FROM OFFICIAL RECORDS, INCLUDING PLATS, SURVEYS, RECORDED DEEDS AND CONTRACTS, AND ONLY CONTAINS INFORMATION REQUIRED FOR THE PINAL COUNTY ASSESSOR'S OFFICE PURPOSES.

SEE MAP 512-43_2