

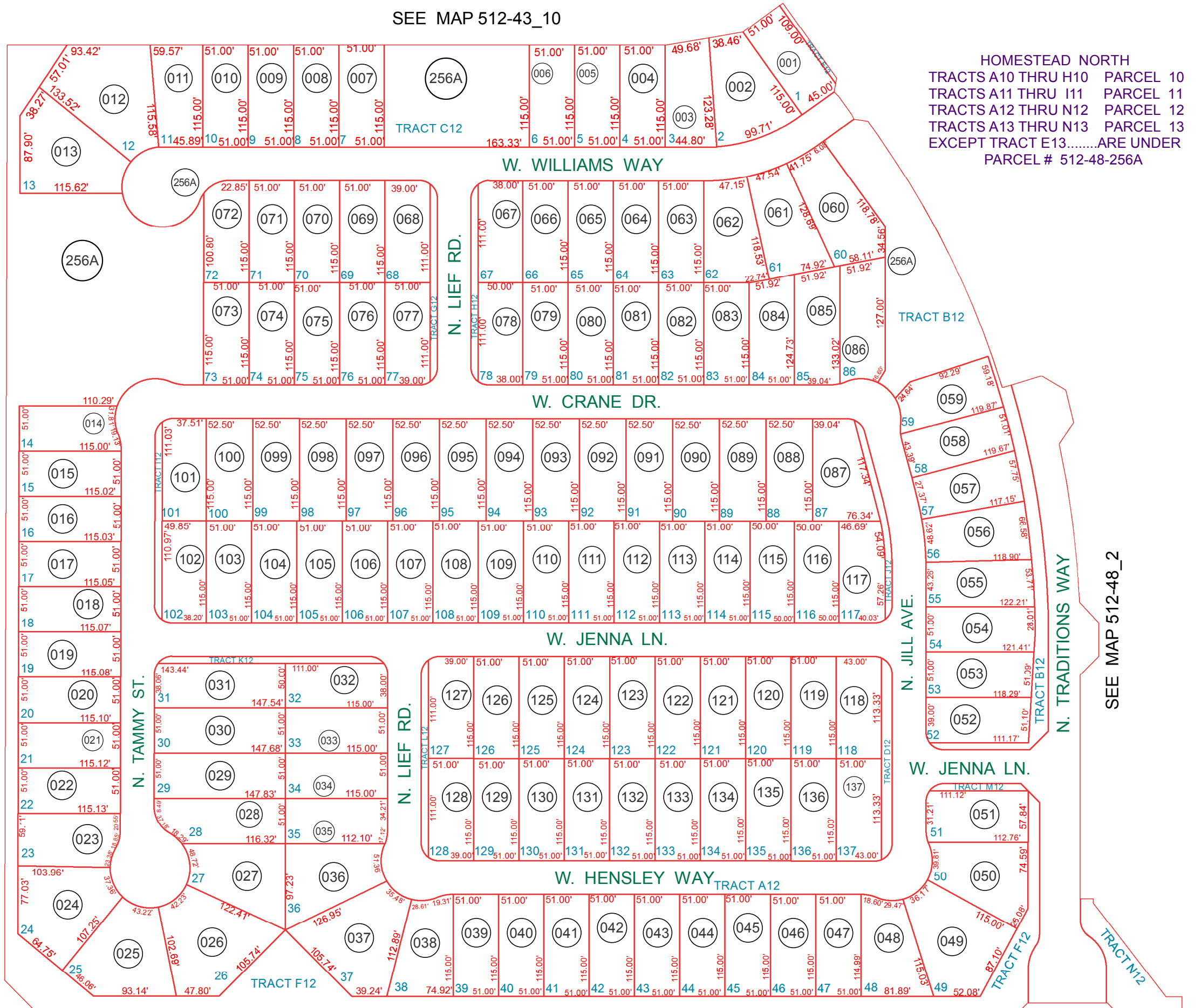
SEE MAP 512-43_10

HOMESTEAD NORTH
TRACTS A10 THRU H10 PARCEL 10
TRACTS A11 THRU I11 PARCEL 11
TRACTS A12 THRU N12 PARCEL 12
TRACTS A13 THRU N13 PARCEL 13
EXCEPT TRACT E13.....ARE UNDER
PARCEL # 512-48-256A

SEE MAP 512-12_4

N. PORTER RD.

SEE MAP 512-48_2



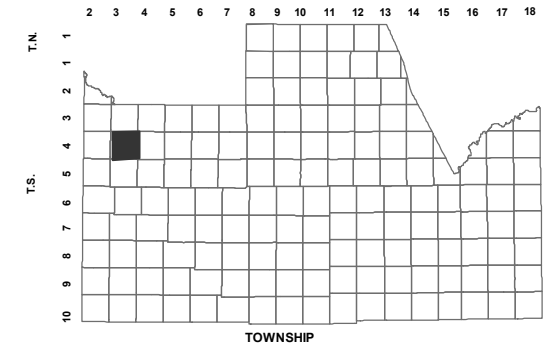
SEE MAP 510-71_1

BOOK - MAP

512-48_1

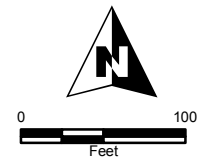
SW SEC. 24 T.04S. R.03E.
PARCEL 12 AT
HOMESTEAD NORTH
CAB. G - SLD. 122

LOCATION MAPS
R.E.



6	5	4	3	2	1
7	8	9	10	11	12
17	16	15	14	13	12
19	20	21	22	23	24
30	29	28	27	26	25
31	32	33	34	35	36

SECTION



Revised: 10/1/2018

By: **TH**



PINAL COUNTY
WIDE OPEN OPPORTUNITY

Pinal County Assessor

THIS MAP DOES NOT REPRESENT A SURVEY. NO LIABILITY IS ASSUMED FOR THE ACCURACY OF THE DATA DELINEATED HEREIN, EITHER EXPRESSED OR IMPLIED BY PINAL COUNTY OR ITS EMPLOYEES. THIS MAP IS COMPILED FROM OFFICIAL RECORDS, INCLUDING PLATS, SURVEYS, RECORDED DEEDS AND CONTRACTS, AND ONLY CONTAINS INFORMATION REQUIRED FOR THE PINAL COUNTY ASSESSOR'S OFFICE PURPOSES.