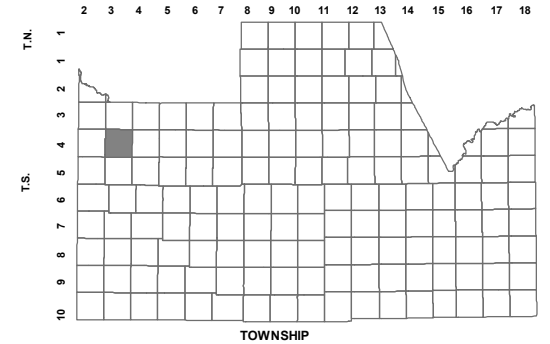


512-49_6

SEC. 24 T.04S. R.03E.
PARCEL 16 AT HOMESTEAD NORTH
CABINET G - SLIDE 126
RE-PLAT OF PARCEL 16 AT
HOMESTEAD NORTH
2018-027719
AFFIDAVIT OF CORRECTION
2018-073486

LOCATION MAPS
R.E.



6	5	4	3	2	1
7	8	9	10	11	12
13	14	15	16	17	18
19	20	21	22	23	24
25	26	27	28	29	30
31	32	33	34	35	36



Revised: 12/7/2018

By: **YL**



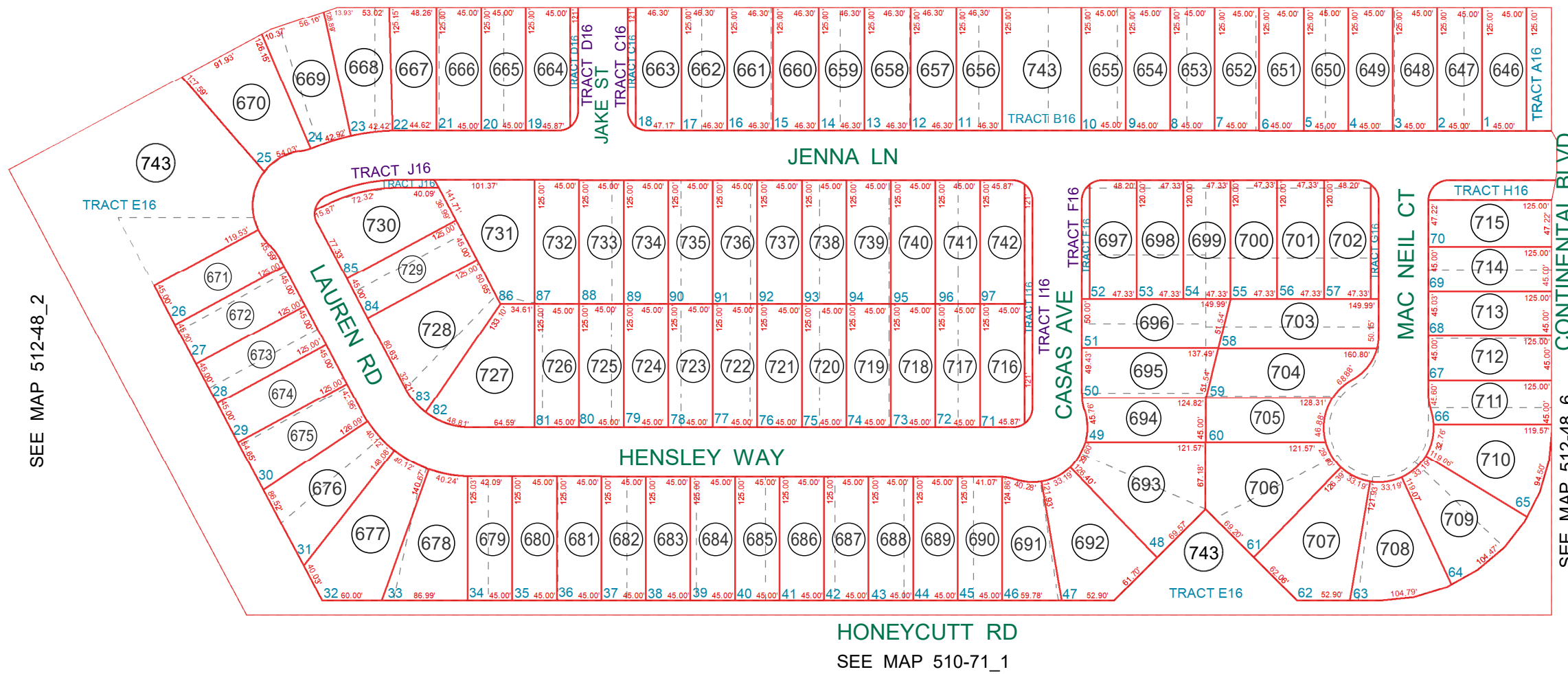
PINAL COUNTY

WIDE OPEN OPPORTUNITY

Pinal County Assessor

THIS MAP DOES NOT REPRESENT A SURVEY. NO LIABILITY IS ASSUMED FOR THE ACCURACY OF THE DATA DELINEATED HEREIN, EITHER EXPRESSED OR IMPLIED BY PINAL COUNTY OR ITS EMPLOYEES. THIS MAP IS COMPILED FROM OFFICIAL RECORDS, INCLUDING PLATS, SURVEYS, RECORDED DEEDS AND CONTRACTS, AND ONLY CONTAINS INFORMATION REQUIRED FOR THE PINAL COUNTY ASSESSOR'S OFFICE PURPOSES.

SEE MAP 512-49_5



HONEYCUTT RD
SEE MAP 510-71_1

512-49-743
COMMON AREA INCLUDES:
TRACTS A16 THRU J16

SEE MAP 512-48_2

SEE MAP 512-48_6