

SEC. 13 NW, TN.8S RG.6E

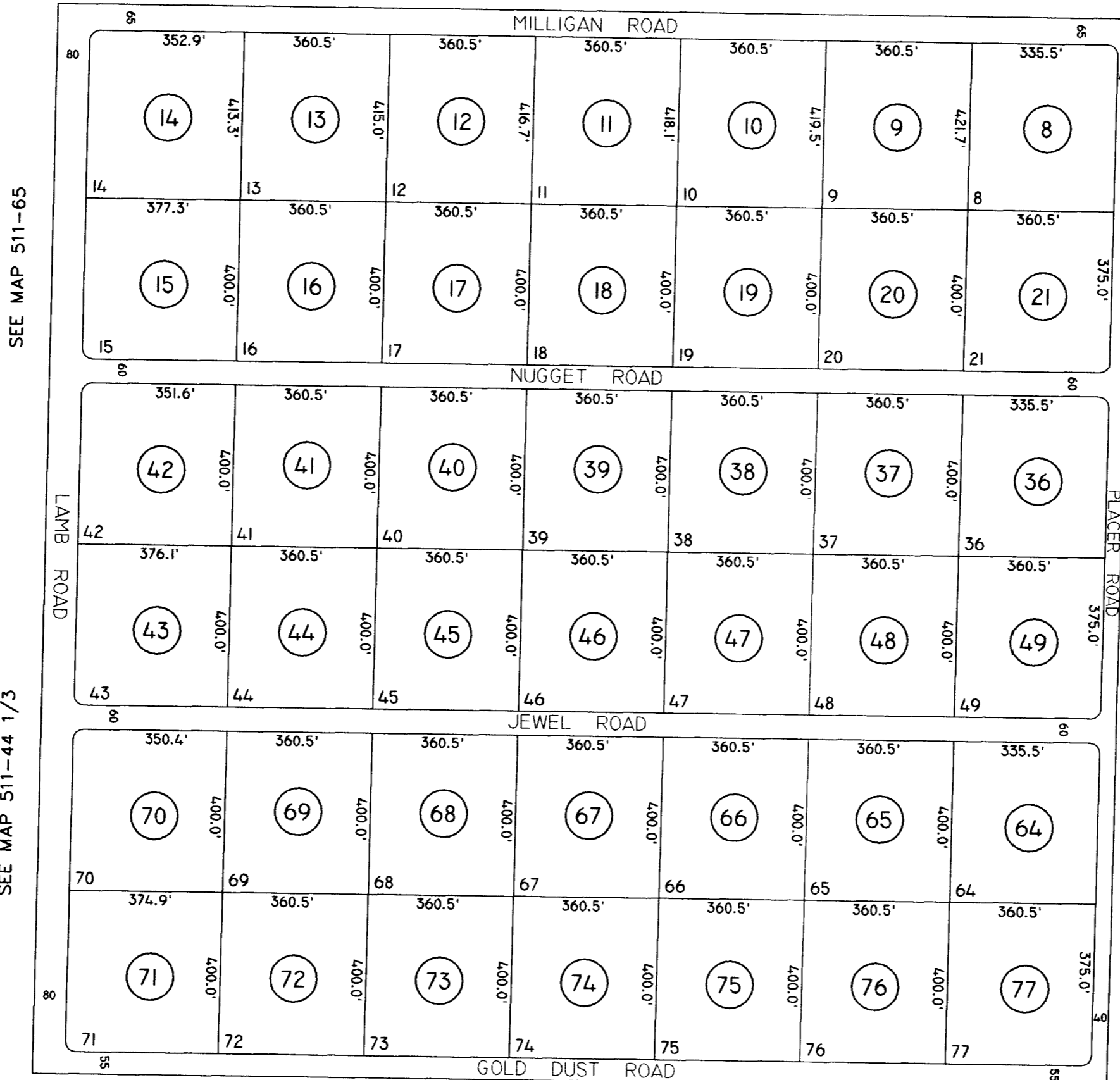
SEE BOOK 407

511-44 3/3

ARIZONA CITY ESTATES UNIT 4 BK.13 - PG.57

THIS MAP IS FOR TAX PURPOSES ONLY.
THIS OFFICE WILL NOT ASSUME LIABILITY FOR
REPRESENTATION, MEASUREMENTS OR ACREAGE.

THE ORIGINAL PLAT OF THIS SUBDIVISION IS
ON FILE WITH THE PINAL COUNTY RECORDERS
OFFICE, FOR COMPLETE INFORMATION OF PLAT
AND CC&R's CALL (520) 868-7100.



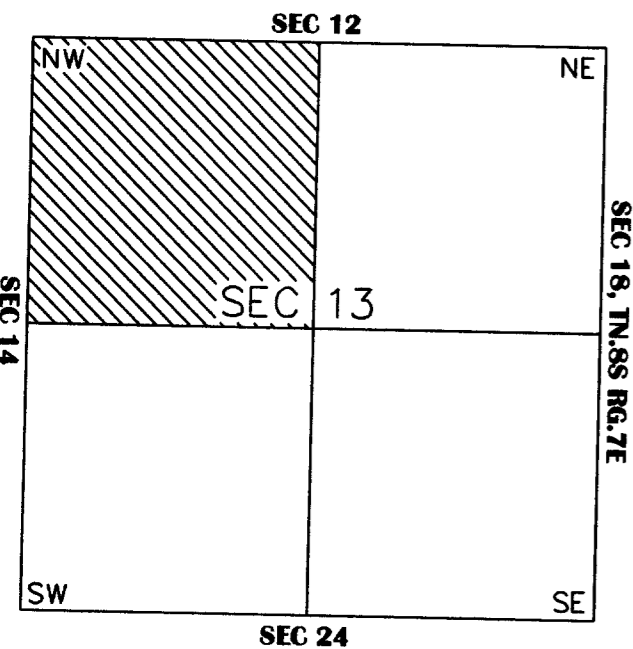
SEE MAP 511-65

SEE MAP 511-44 1/3

SEE MAP 511-44 2/3

SEE MAP 511-81

VICINITY MAP



SCALE: 1" = 300'

5-08-2002