

SEC. 23 SW-SE, E/2-E/2, TN.7S RG.6E

THIS MAP IS FOR TAX PURPOSES ONLY. THIS OFFICE WILL NOT ASSUME LIABILITY FOR REPRESENTATION, MEASUREMENTS OR ACREAGE.

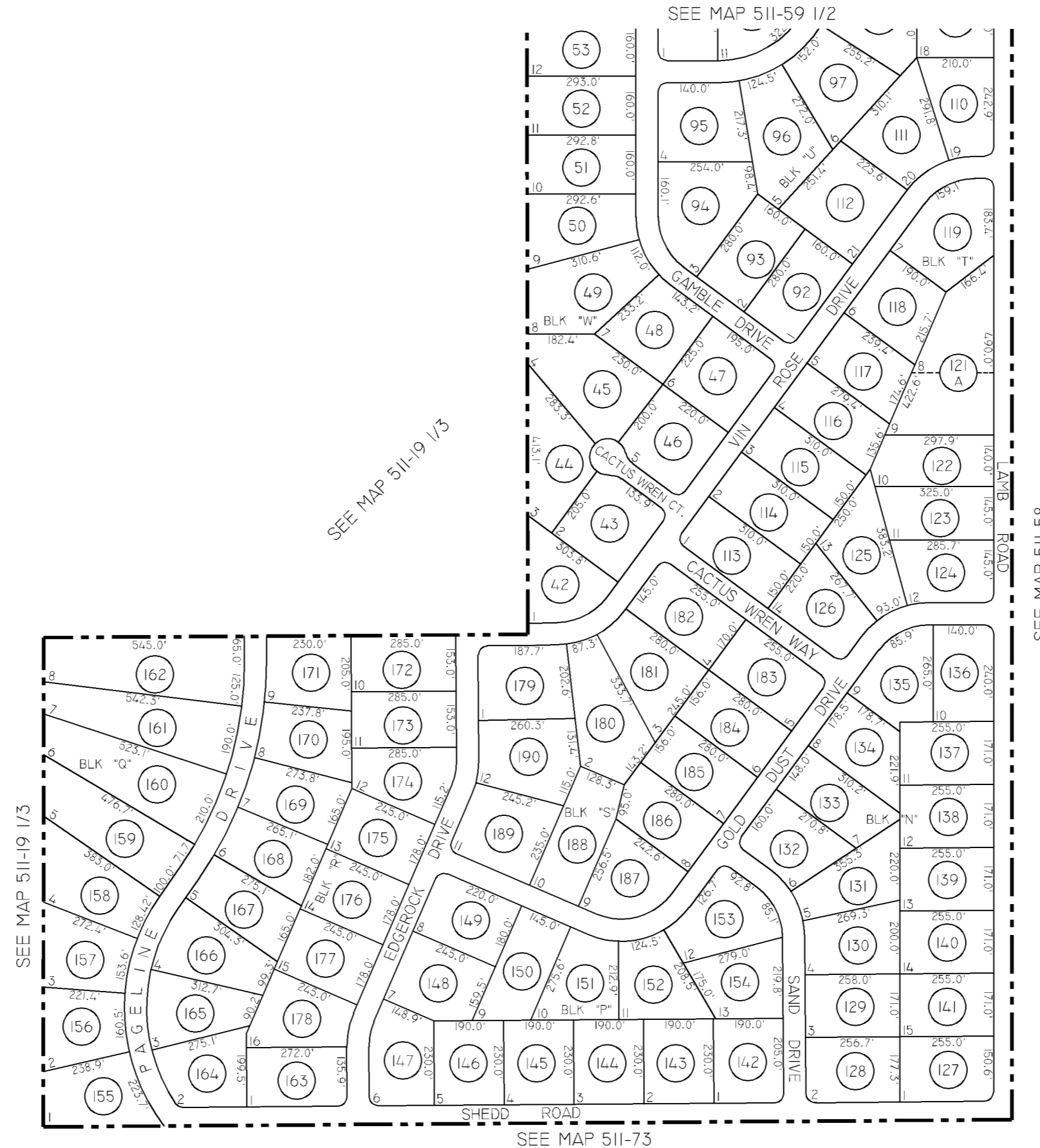
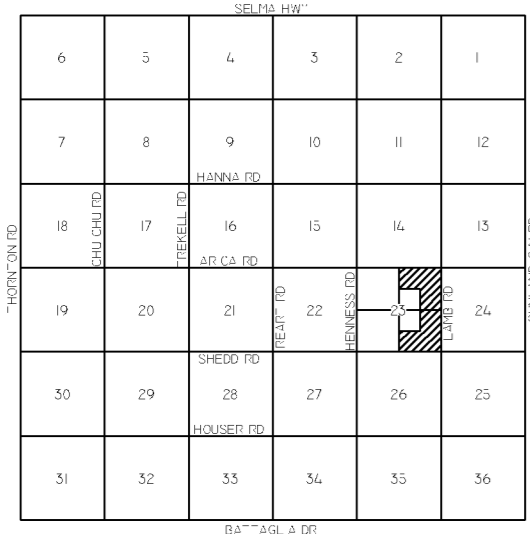
ORIGINAL SURVEYS & SUBDIVISION PLATS ARE ON FILE WITH THE PINAL COUNTY RECORDER'S OFFICE. FOR COMPLETE INFORMATION OF PLAT AND CC&R's CALL (520) 866-7100.

511-59 2/2

MOUNTAIN VIEW ESTATES UNIT 3

BK.17 - PG.09

VICINITY MAP



SEE MAP 511-58



SCALE: 1" = 300'

05-27-2005