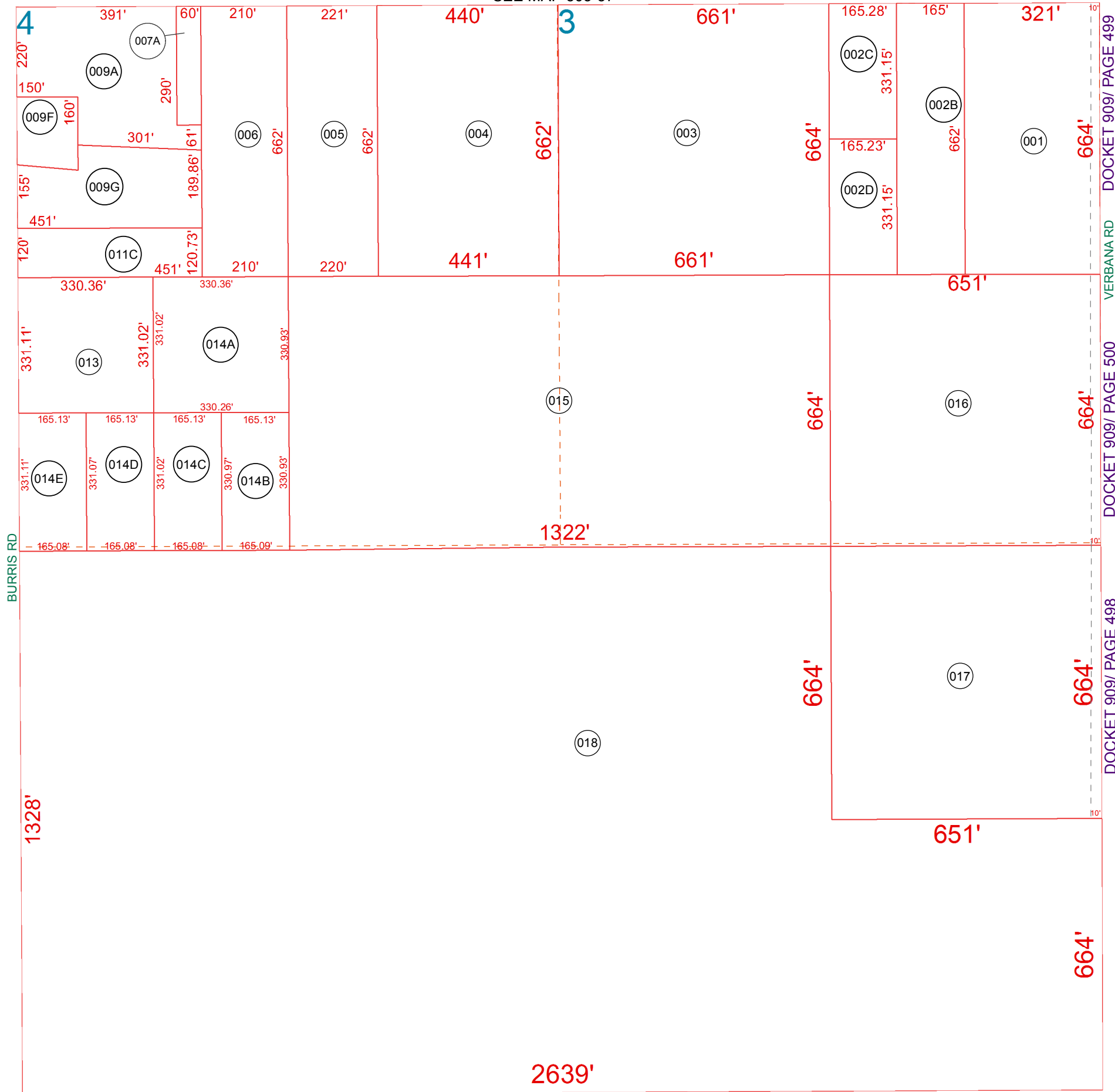


SEE MAP 503-57

SELMA HWY

SEE MAP 511-03



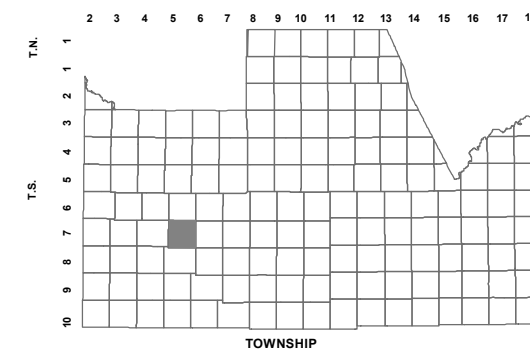
SEE MAP 511-02

BOOK - MAP

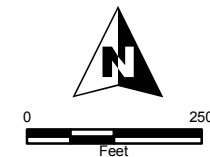
511-75

NW SEC. 1 T.07S. R.05E.

LOCATION MAPS



| | | | | | |
|-------------|----|------------|----|----------------|----|
| SELMA HWY | | | | | |
| 6 | 5 | 4 | 3 | 2 | 1 |
| CORRALES RD | | CORNMAN RD | | | |
| 7 | 8 | 9 | 10 | 11 | 12 |
| HANNARD | | | | | |
| 18 | 17 | 16 | 15 | 14 | 13 |
| MONTGOMERY | | ARICA RD | | BURRIS RD | |
| 19 | 20 | 21 | 22 | 23 | 24 |
| MIDWAY RD | | SHEDD RD | | S. THORNTON RD | |
| 30 | 29 | 28 | 27 | 26 | 25 |
| 31 | 32 | 33 | 34 | 35 | 36 |
| SECTION | | | | | |



Revised: 1/19/2017

By: K G



PINAL COUNTY
wide open opportunity

Pinal County Assessor

THIS MAP DOES NOT REPRESENT A SURVEY. NO LIABILITY IS ASSUMED FOR THE ACCURACY OF THE DATA DELINEATED HEREIN, EITHER EXPRESSED OR IMPLIED BY PINAL COUNTY OR ITS EMPLOYEES. THIS MAP IS COMPILED FROM OFFICIAL RECORDS, INCLUDING PLATS, SURVEYS, RECORDED DEEDS AND CONTRACTS, AND ONLY CONTAINS INFORMATION REQUIRED FOR THE PINAL COUNTY ASSESSOR'S OFFICE PURPOSES.