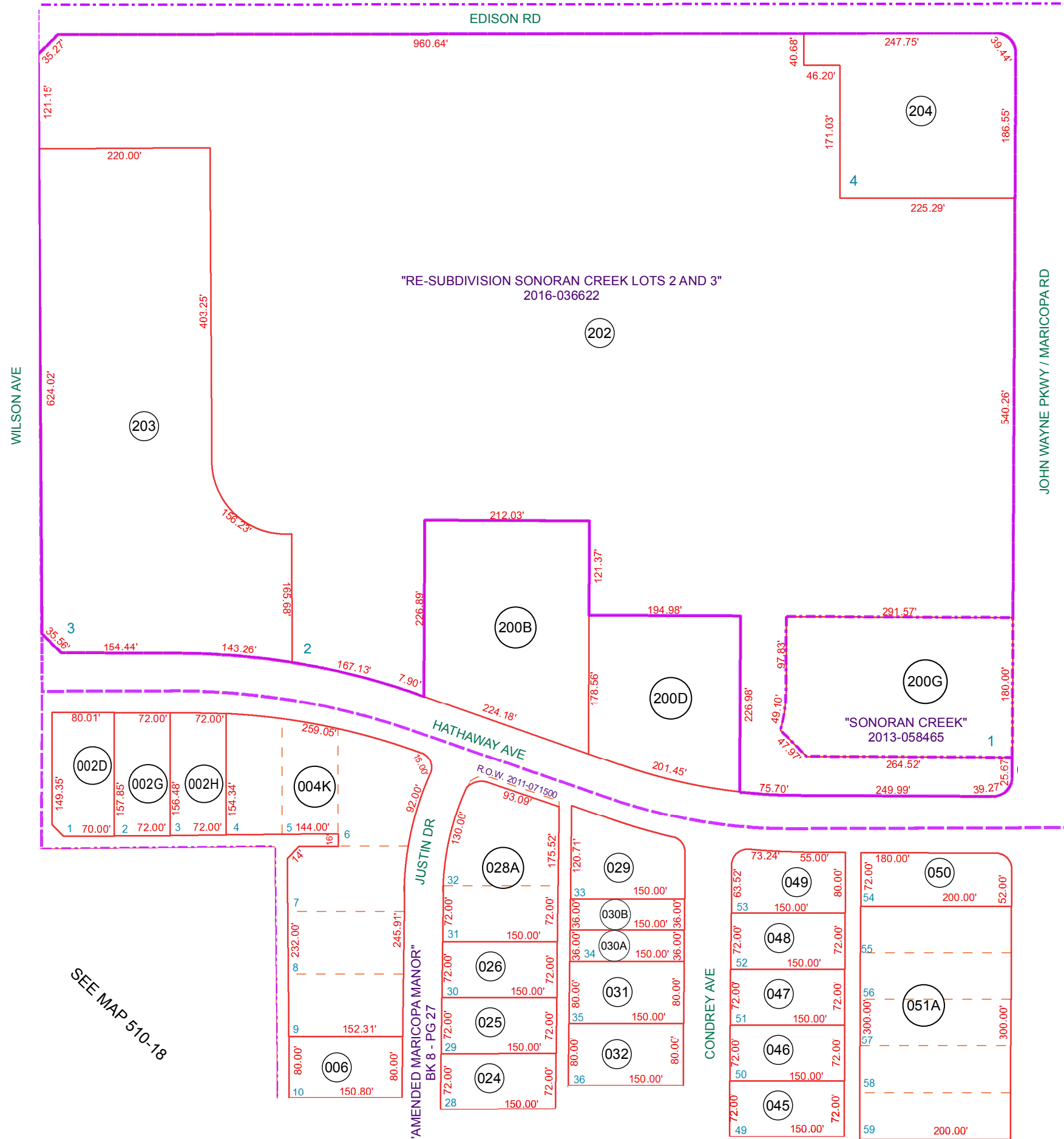


SFF MAP 512-30 5

SEE MAP 512-04 1



SEE MAP 510-20

SEE MAP 512-04_1

SEE MAP 510-18

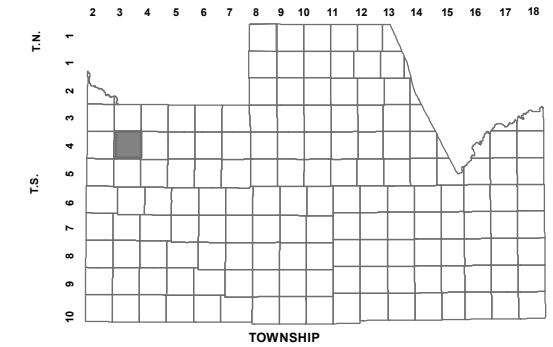
SEE MAP 510-19_2

BOOK - MAP

510-19_1

NE SE SEC. 21 T.04S. R.03E.
AMENDED MARICOPA MANOR: BOOK 8 - PAGE 27
MAP OF DEDICATION FOR SONORAN CREEK:
CABINET H - SLIDE 98
SONORAN CREEK: 2013-058465
RE-SUBDIVISION SONORAN CREEK LOTS 2 AND 3:
2016-036622

LOCATION MAPS
R.E.



6	5	4	3	2	1
7	8	9	10	11	12
18	17	16	15	14	13
19	20	21	22	23	24
30	29	28	27	26	25
31	32	33	34	35	36



Revised: 12/7/2016

By: DW



PINAL COUNTY
wide open opportunity

Pinal County Assessor

THIS MAP DOES NOT REPRESENT A SURVEY. NO LIABILITY IS ASSUMED FOR THE ACCURACY OF THE DATA DELINEATED HEREIN, EITHER EXPRESSED OR IMPLIED BY PINAL COUNTY OR ITS EMPLOYEES. THIS MAP IS COMPILED FROM OFFICIAL RECORDS, INCLUDING PLATS, SURVEYS, RECORDED DEEDS AND CONTRACTS, AND ONLY CONTAINS INFORMATION REQUIRED FOR THE PINAL COUNTY ASSESSOR'S OFFICE PURPOSES.