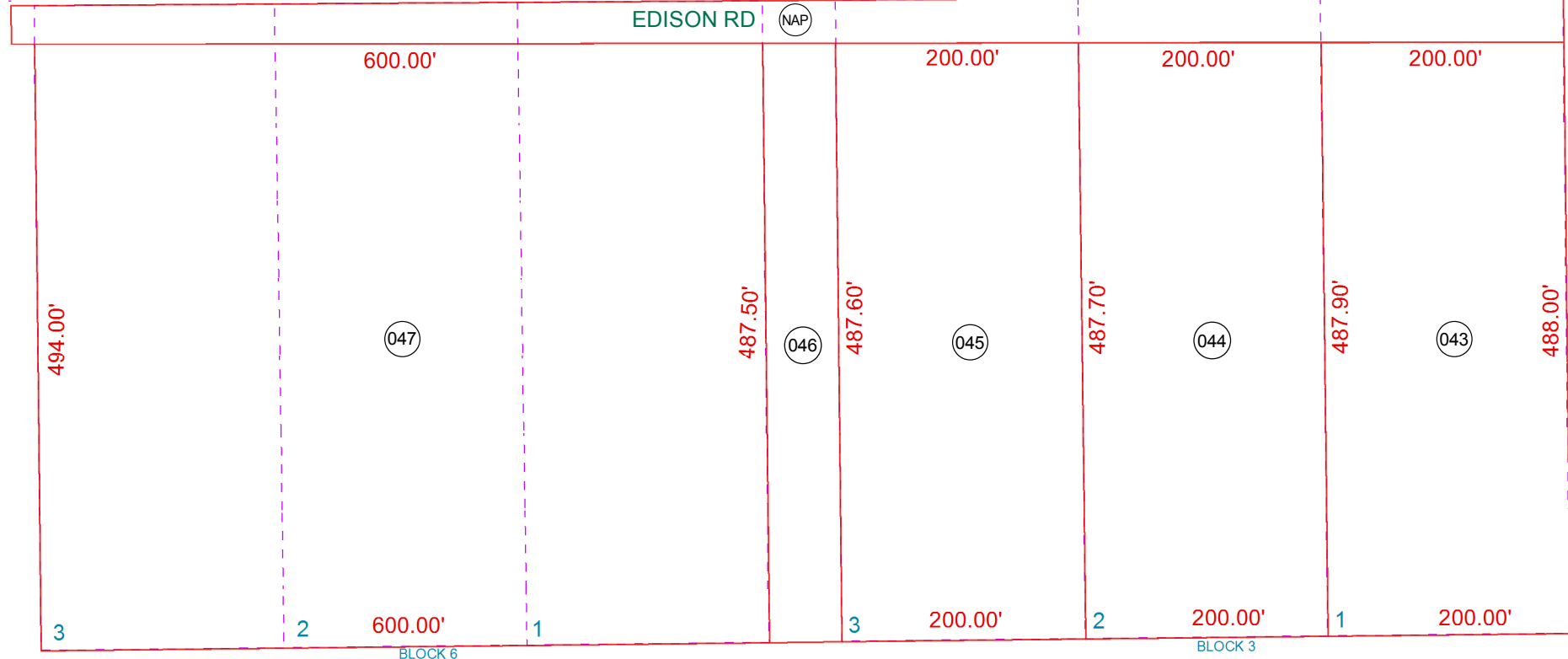
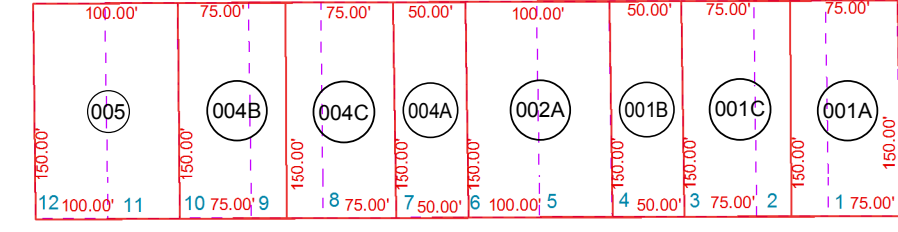
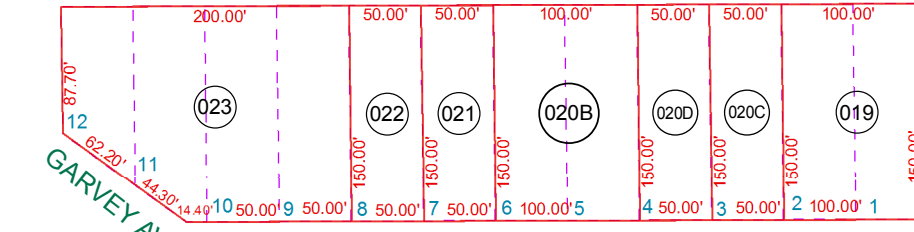
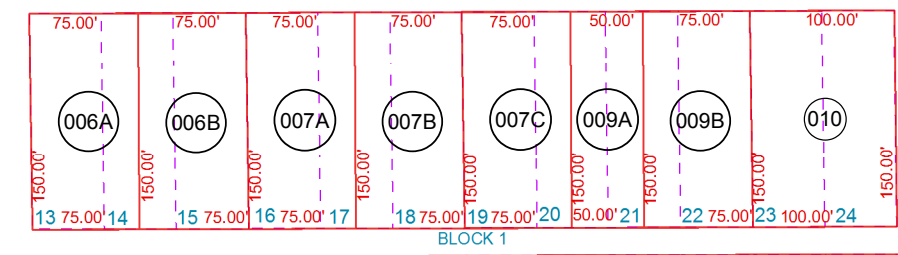
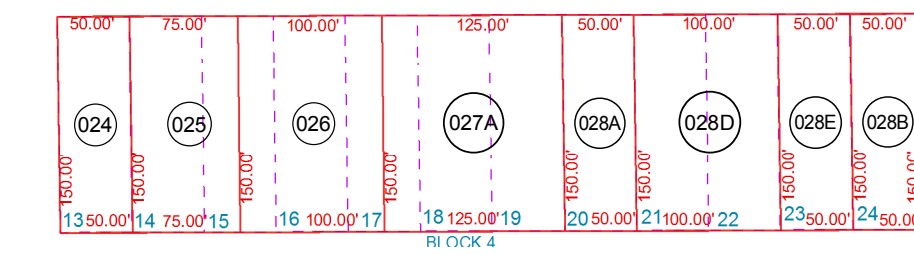
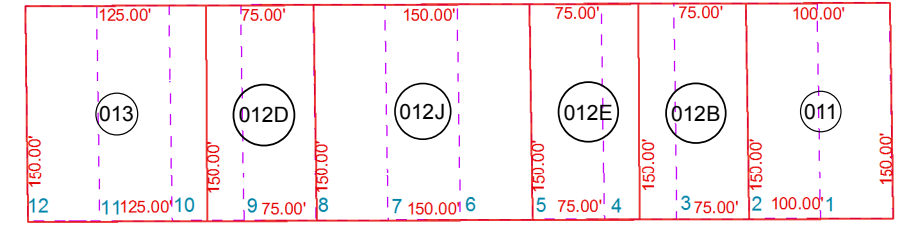
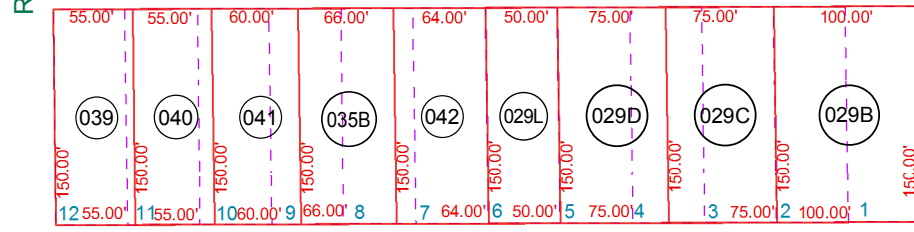
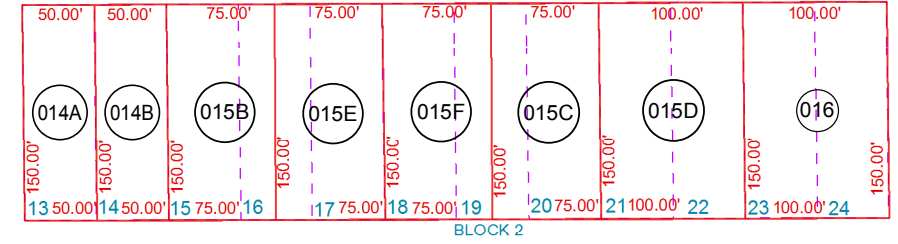
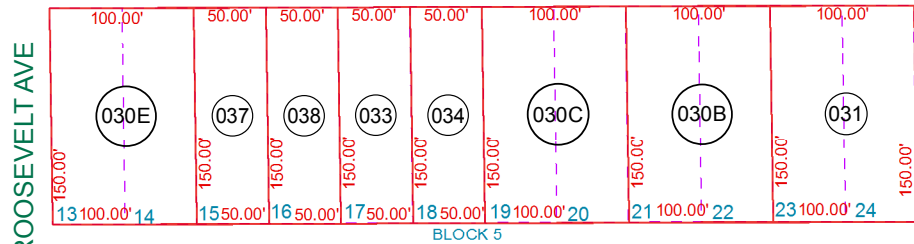


SEE MAP 512-30\_6

E 1/4  
CORNER



SEE MAP 510-17



MADISON AVE  
SEE MAP 510-18

GARVEY AVE

SEE MAP 510-19\_1

# 510-20

BOOK - MAP

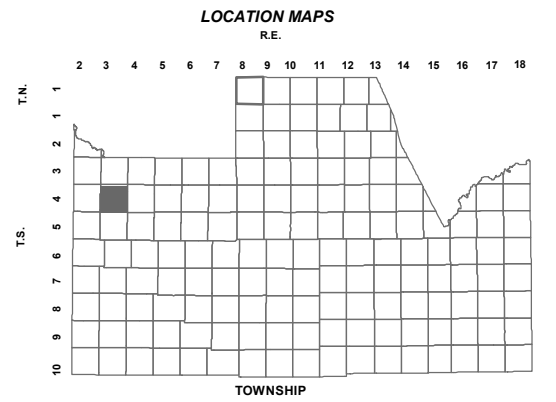
**NW SE SEC. 21 T.04S. R.03E.**

**NORTH MARICOPA: BOOK 3 OF MAPS PAGE 008**

**MAP OF DEDICATION OF**

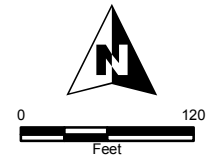
**EDISON ROAD AND**

**ABANDONMENT OF TAFT AVENUE: 2012-077122**



6	5	4	3	2	1
7	8	9	10	11	12
13	14	15	16	17	18
19	20	21	22	23	24
25	26	27	28	29	30
31	32	33	34	35	36

SECTION



Revised: 5/4/2017

By: MBG



**PINAL COUNTY**  
*wide open opportunity*

**Pinal County Assessor**

THIS MAP DOES NOT REPRESENT A SURVEY. NO LIABILITY IS ASSUMED FOR THE ACCURACY OF THE DATA DELINEATED HEREIN, EITHER EXPRESSED OR IMPLIED BY PINAL COUNTY OR ITS EMPLOYEES. THIS MAP IS COMPILED FROM OFFICIAL RECORDS, INCLUDING PLATS, SURVEYS, RECORDED DEEDS AND CONTRACTS, AND ONLY CONTAINS INFORMATION REQUIRED FOR THE PINAL COUNTY ASSESSOR'S OFFICE PURPOSES.