

SEC. 33 PT-S/2, TN.5S RG.2E

510-60

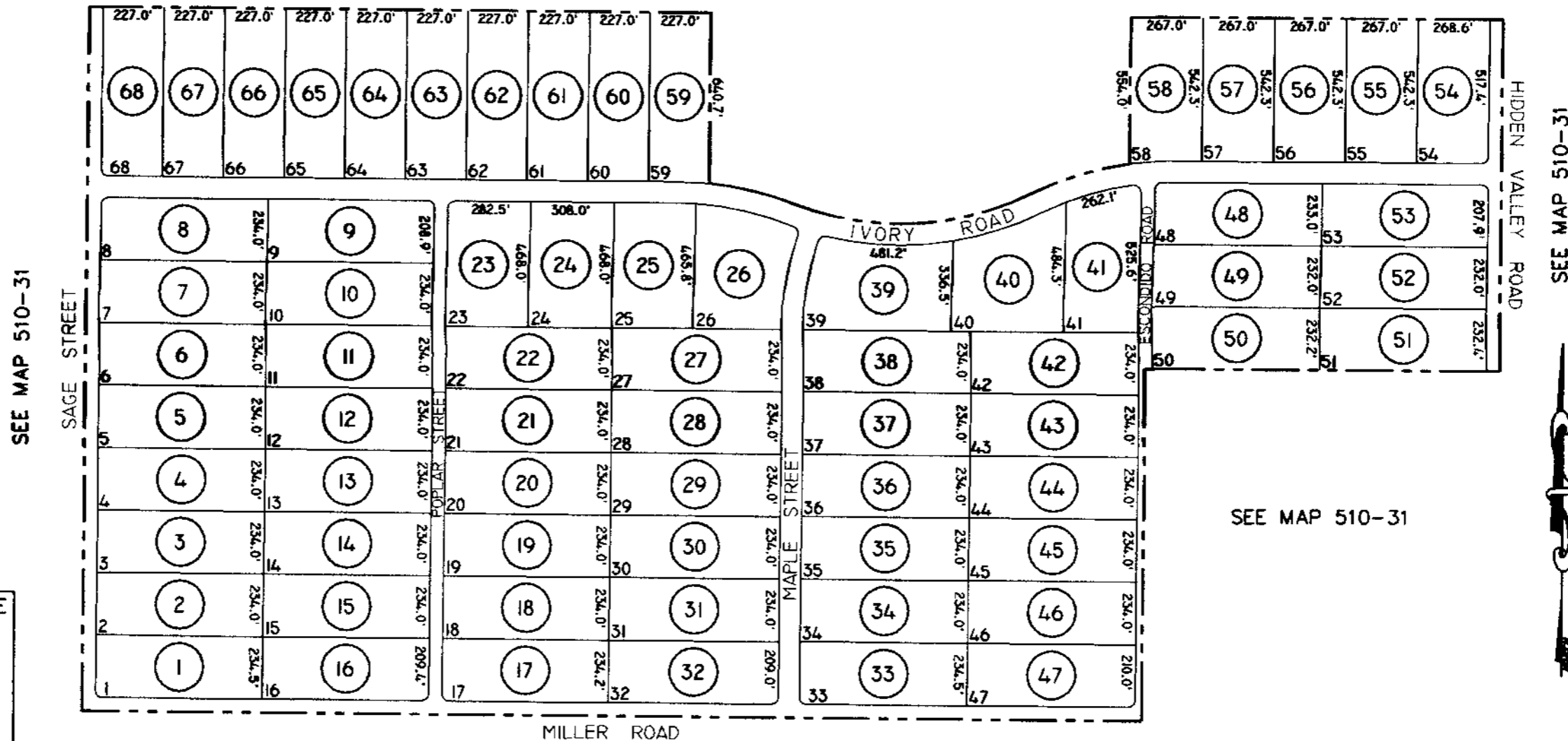
THIS MAP IS FOR TAX PURPOSES ONLY.
THIS OFFICE WILL NOT ASSUME LIABILITY FOR
REPRESENTATION, MEASUREMENTS OR ACREAGE.

THE ORIGINAL PLAT OF THIS SUBDIVISION IS
ON FILE WITH THE PINAL COUNTY RECORDERS
OFFICE, FOR COMPLETE INFORMATION OF PLAT
AND CC&R'S CALL (520) 866-7100.

ESCONDIDO RANCHOS

BK.16 - PG.31

SEE MAP 510-31



SEE MAP 510-31

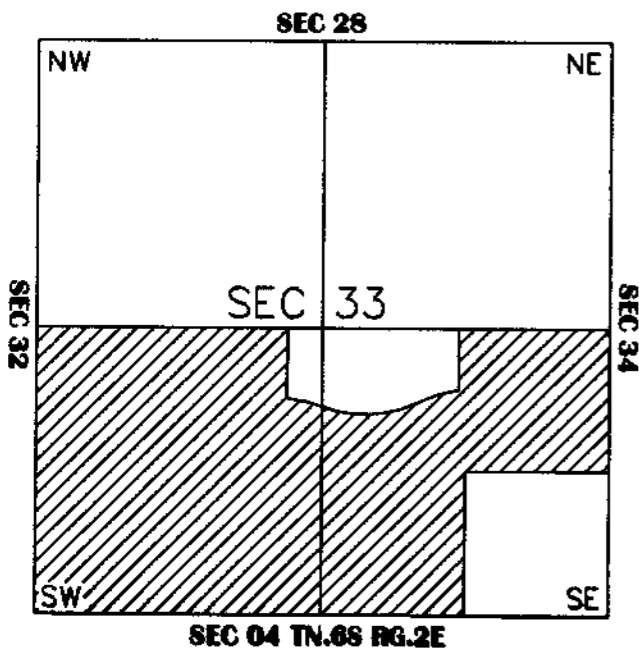
SEE MAP 510-31

SEE MAP 510-31

MILLER ROAD

SEE BOOK 501

VICINITY MAP



SCALE: 1" = 500'

8-20-2001