

# SEC. 25, TN.5S RG.2E

SEE MAP 510-62 3/3

THIS MAP IS FOR TAX PURPOSES ONLY.  
THIS OFFICE WILL NOT ASSUME LIABILITY FOR  
REPRESENTATION, MEASUREMENTS OR ACREAGE.

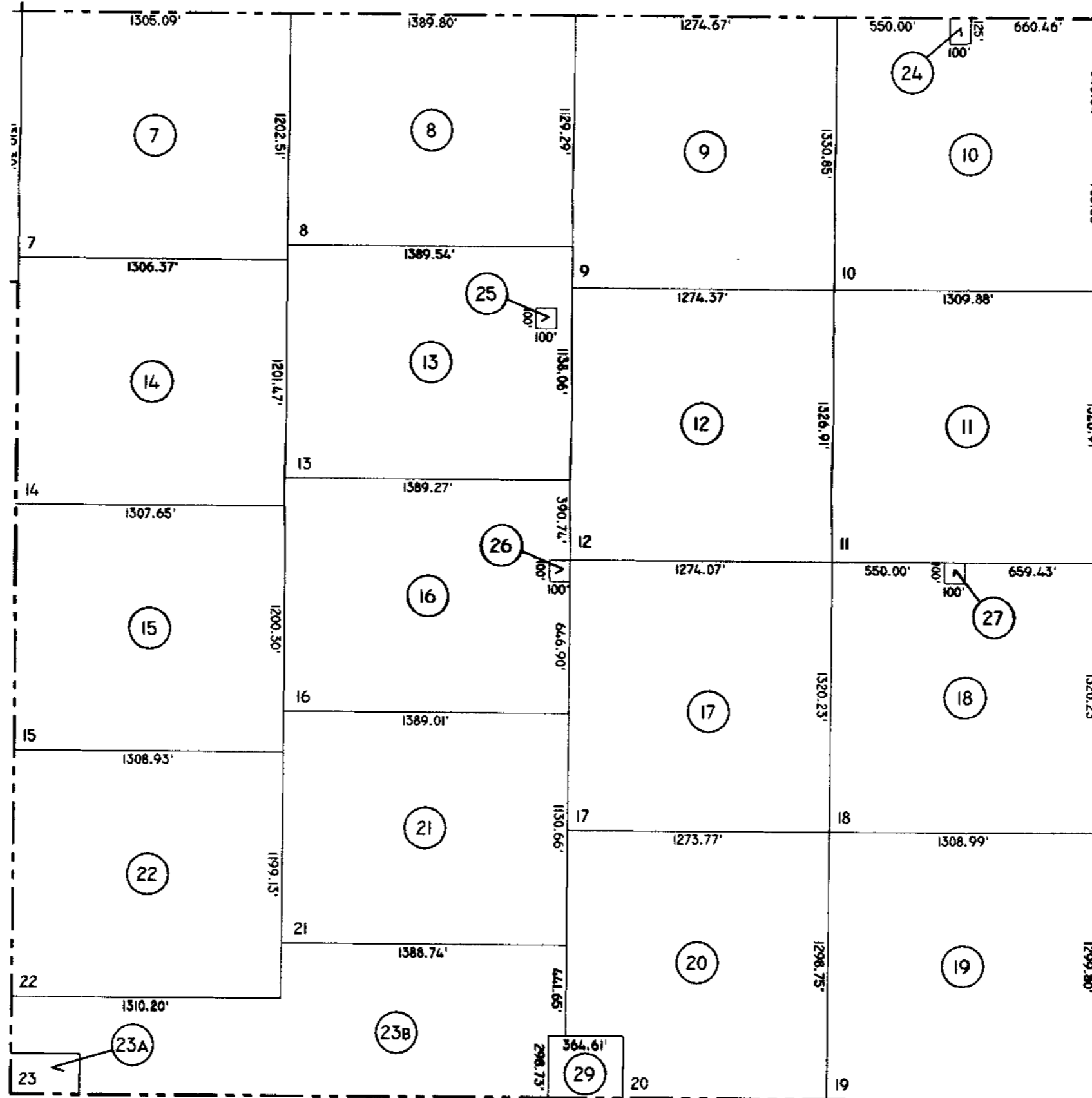
THE ORIGINAL PLAT OF THIS SUBDIVISION IS  
ON FILE WITH THE PINAL COUNTY RECORDERS  
OFFICE, FOR COMPLETE INFORMATION OF PLAT  
AND CC&R'S CALL (520) 868-7100.

# 510-78 2/2

## SANTA ROSA RANCHES UNIT 1 BK.02 (SUR) - PG.74

SEE MAP 510-77 1/2

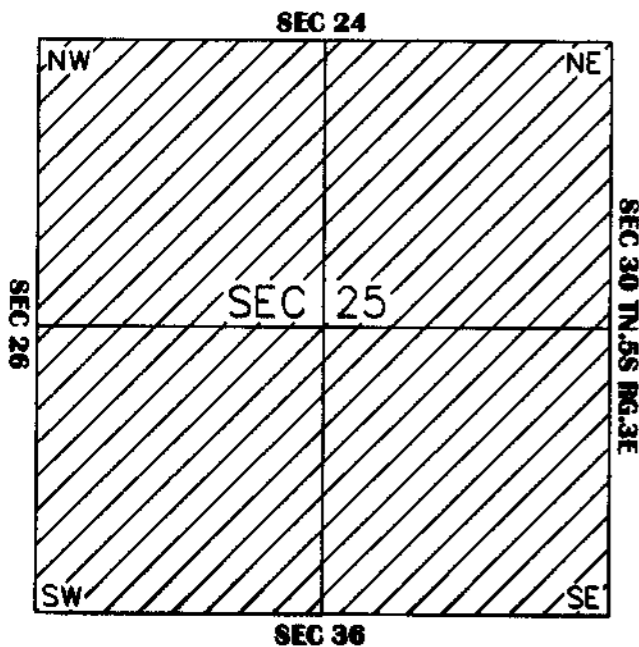
SEE MAP 510-31



SEE MAP 510-48 1/3

SEE MAP 510-31

### VICINITY MAP



SCALE: 1" = 600'

8-22-2001