

SEE MAP 509-34

SEE MAP 509-24

W. GHOST RANCH RD.

(161)

W. TANGERINE RD.

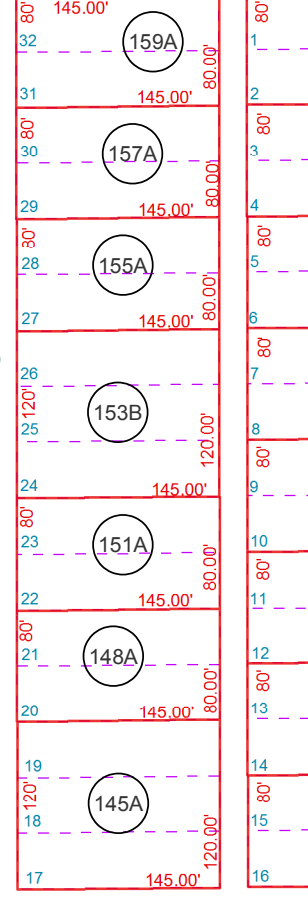
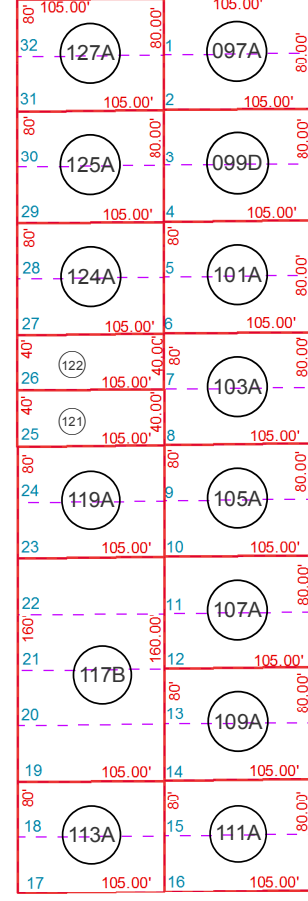
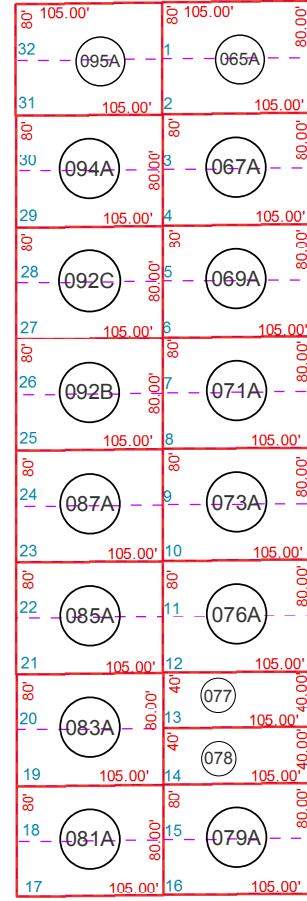
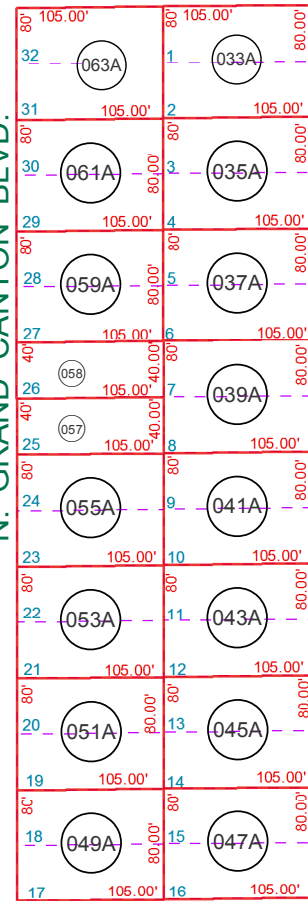
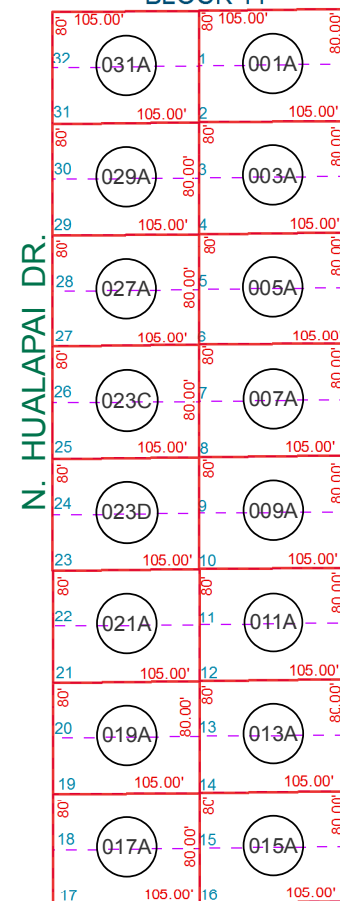
BLOCK 11

BLOCK 12

BLOCK 13

BLOCK 14

BLOCK 15



W. WATSON WAY

SEE MAP 509-32

SEE MAP 509-31_1

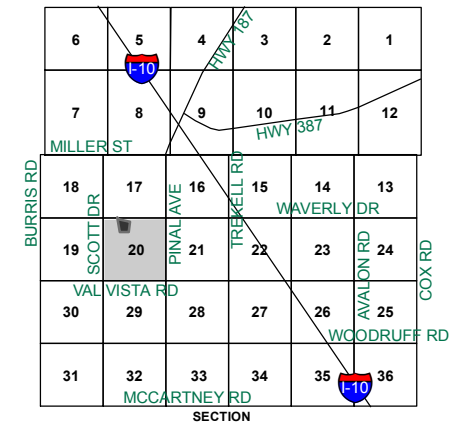
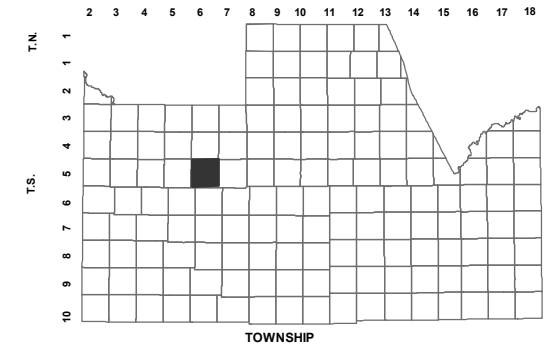
BOOK - MAP

509-33

SEC. 20 T.05S. R.06E.
DEER RUN RANCH ESTATES
UNIT 2 AMENDED

BOOK 8 - PG 014
BOOK 14 - PAGE 36

LOCATION MAPS
R.E.



Revised: 2/16/2018

By: **TH**



PINAL COUNTY

WIDE OPEN OPPORTUNITY

Pinal County Assessor

THIS MAP DOES NOT REPRESENT A SURVEY. NO LIABILITY IS ASSUMED FOR THE ACCURACY OF THE DATA DELINEATED HEREIN, EITHER EXPRESSED OR IMPLIED BY PINAL COUNTY OR ITS EMPLOYEES. THIS MAP IS COMPILED FROM OFFICIAL RECORDS, INCLUDING PLATS, SURVEYS, RECORDED DEEDS AND CONTRACTS, AND ONLY CONTAINS INFORMATION REQUIRED FOR THE PINAL COUNTY ASSESSOR'S OFFICE PURPOSES.