

# SEC. 20 SW, TN.5S RG.6E

# 509-37

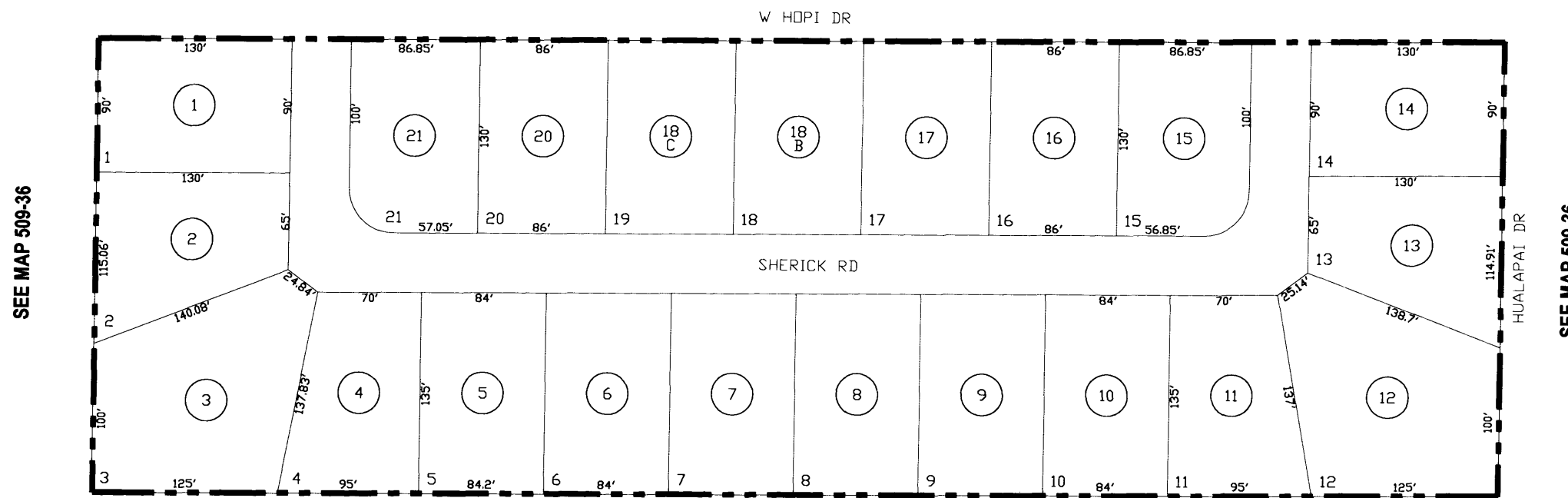
THIS MAP IS FOR TAX PURPOSES ONLY.  
 THIS OFFICE WILL NOT ASSUME LIABILITY FOR REPRESENTATION, MEASUREMENTS OR ACREAGE.

SACATON VIEW

BK 8 - PG 042

THE ORIGINAL PLAT OF THIS SUBDIVISION IS ON FILE WITH THE PINAL COUNTY RECORDERS OFFICE, FOR COMPLETE INFORMATION OF PLAT AND CC&R's CALL (520) 868-7100.

SEE MAP 509-35



SEE MAP 509-36

SEE MAP 509-36



SCALE: 1" = 100'

02-10-2005

## VICINITY MAP

