

**SEC. 5 TN.3S RG.7E**

MARICOPA COUNTY

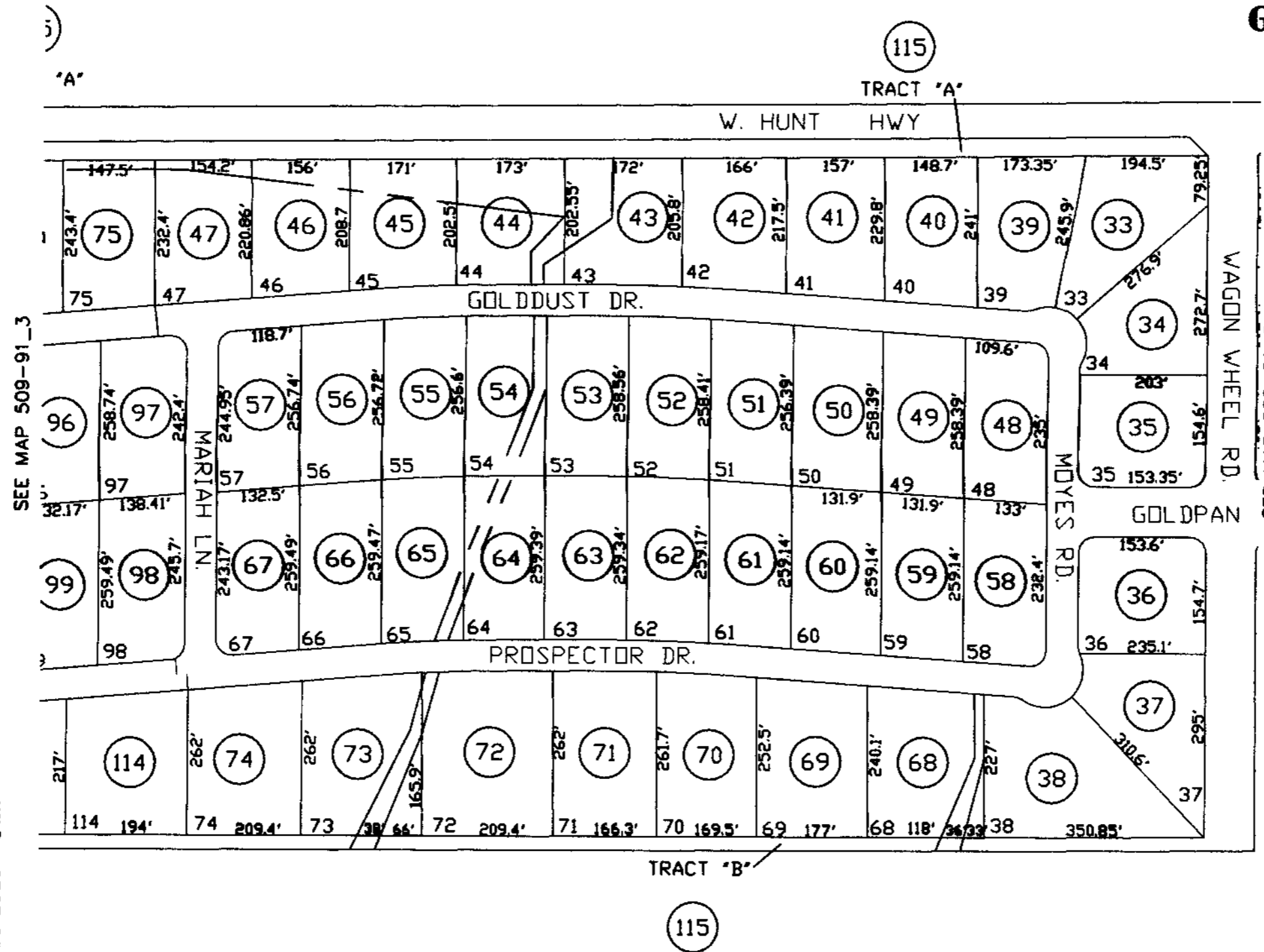
**509-91  
2/3**

**GOLDMINE MOUNTAIN  
CAB "D" SLIDE 027**

AREA CODE  
0000

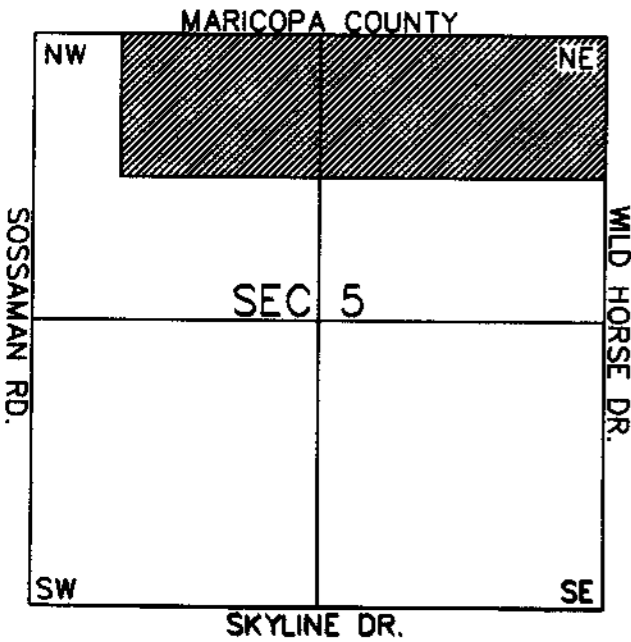
SPECIAL DISTRICTS  
00000  
00000

THIS MAP IS FOR TAX PURPOSES ONLY.  
THIS OFFICE WILL NOT ASSUME LIABILITY FOR  
REPRESENTATION, MEASUREMENTS OR ACREAGE.



THE ORIGINAL PLAT OF THIS SUBDIVISION IS  
ON FILE WITH THE PINAL COUNTY RECORDERS  
OFFICE, FOR COMPLETE INFORMATION OF PLAT  
AND CC&R'S CALL (520) 866-7100.  
CANCELED PARCEL  
509-06-001B

**VICINITY MAP**



SEE MAP 509-06\_1

SCALE: 1" = 200'

12-17-2001

**PINAL COUNTY ASSESSORS MAP**