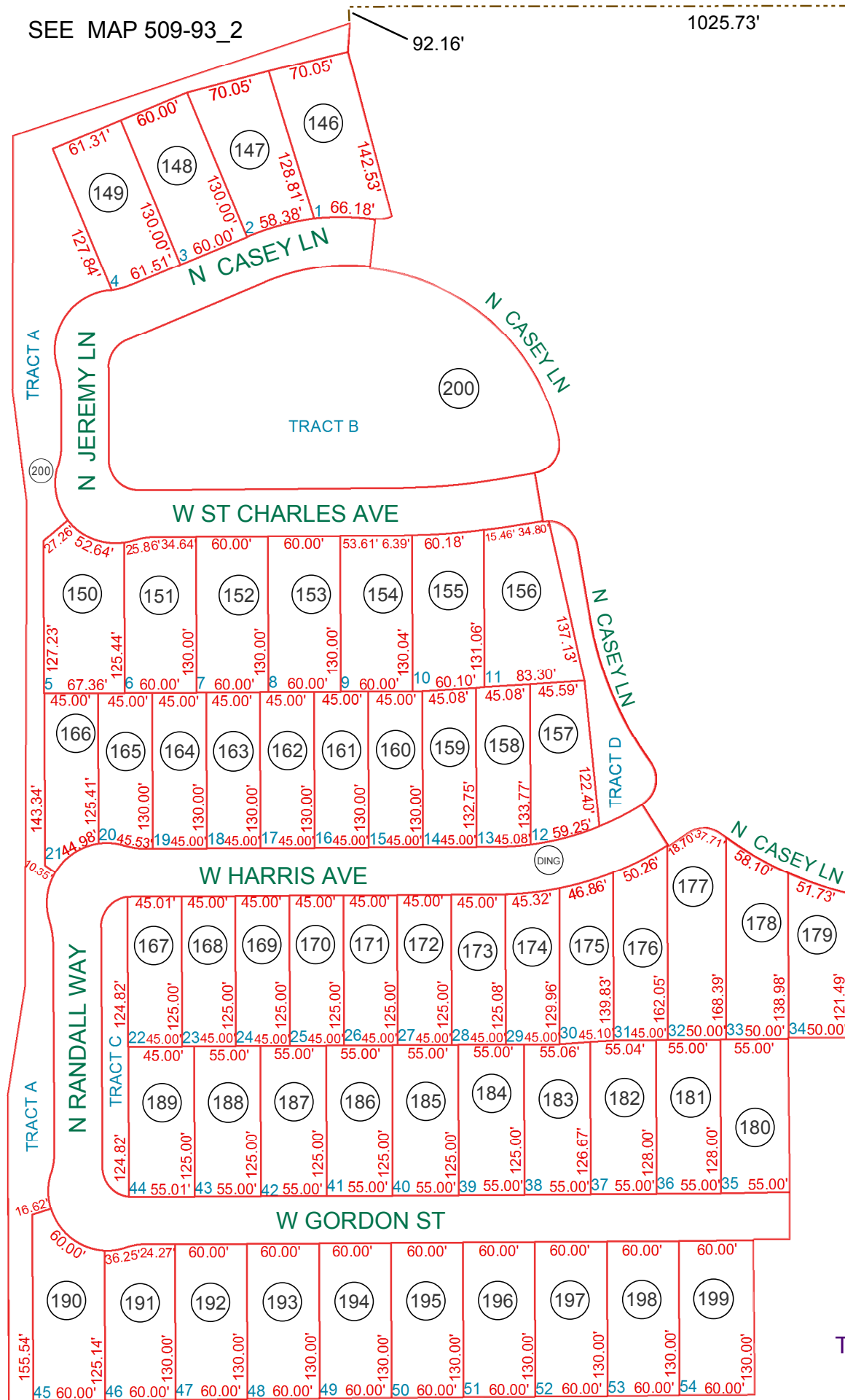


SEE MAP 509-93\_2

92.16'

1025.73'

NE CORNER  
SEC 12



TRACTS A THRU D ARE UNDER  
PARCEL # 509-93-200

SEE MAP 509-94\_1

SEE MAP 509-93\_2

SEE MAP 509-94\_8

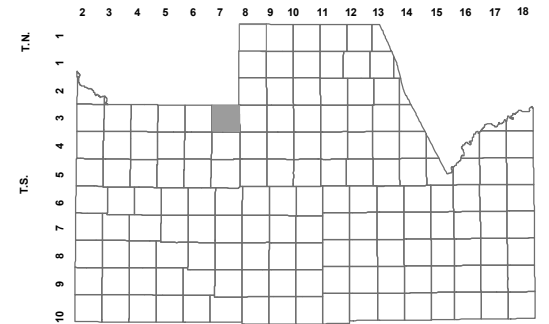
BOOK - MAP

# 509-93\_3

NE SEC 12. T.03S. R.07E.

MORNING SUN FARMS UNIT 7B  
2017-083558

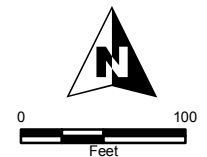
LOCATION MAPS  
R.E.



TOWNSHIP

6	5	4	3	2	1
7	8	9	10	11	12
18	17	16	15	14	13
19	20	21	22	23	24
30	29	28	27	26	25
31	32	33	34	35	36

SECTION  
HARMON RD



Revised: 4/6/2018

By: **YL**



**PINAL COUNTY**  
WIDE OPEN OPPORTUNITY

Pinal County Assessor

THIS MAP DOES NOT REPRESENT A SURVEY. NO LIABILITY IS ASSUMED FOR THE ACCURACY OF THE DATA DELINEATED HEREIN, EITHER EXPRESSED OR IMPLIED BY PINAL COUNTY OR ITS EMPLOYEES. THIS MAP IS COMPILED FROM OFFICIAL RECORDS, INCLUDING PLATS, SURVEYS, RECORDED DEEDS AND CONTRACTS, AND ONLY CONTAINS INFORMATION REQUIRED FOR THE PINAL COUNTY ASSESSOR'S OFFICE PURPOSES.