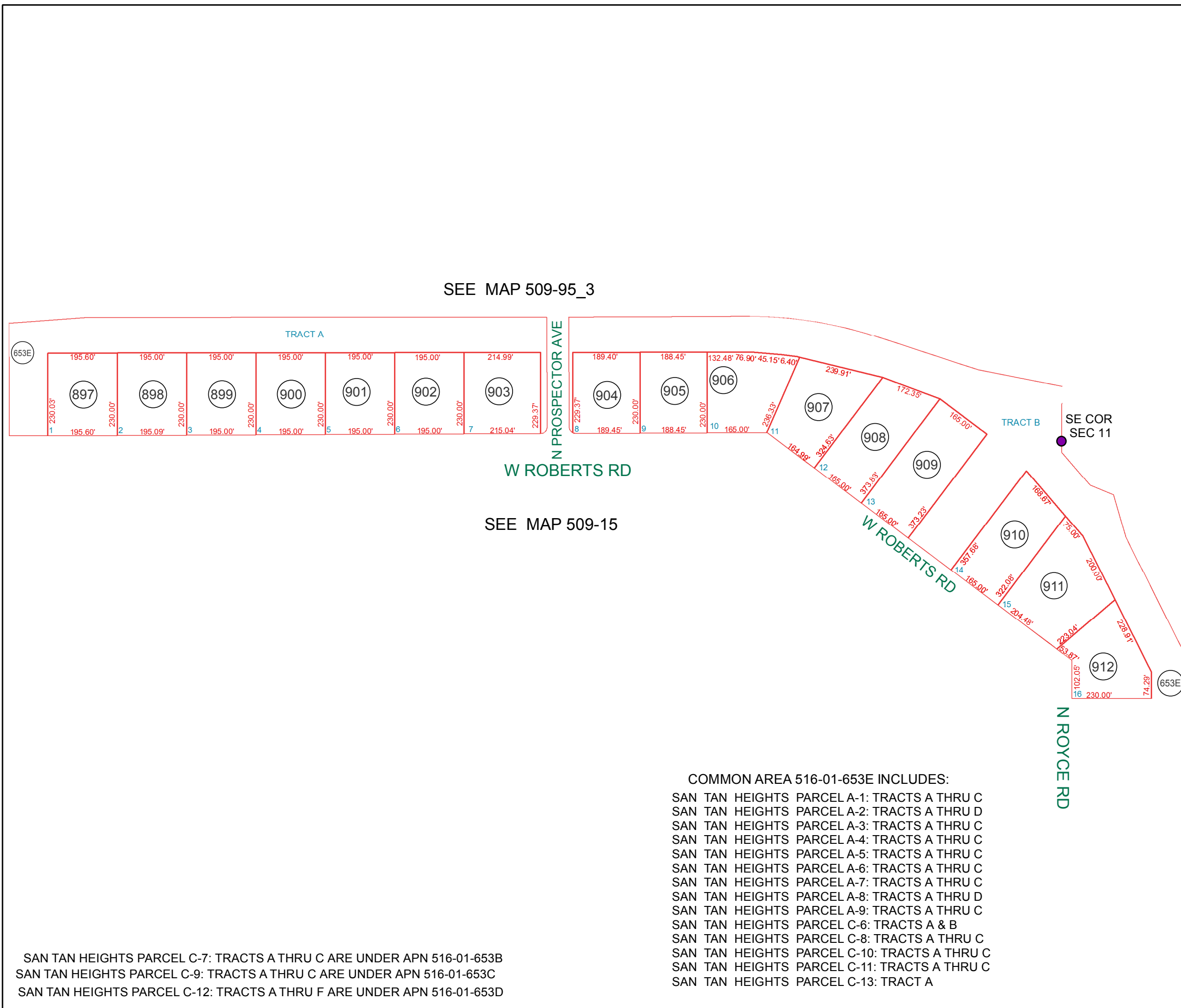


SEE MAP 516-01_9



SAN TAN HEIGHTS PARCEL C-7: TRACTS A THRU C ARE UNDER APN 516-01-653B
 SAN TAN HEIGHTS PARCEL C-9: TRACTS A THRU C ARE UNDER APN 516-01-653C
 SAN TAN HEIGHTS PARCEL C-12: TRACTS A THRU F ARE UNDER APN 516-01-653D

COMMON AREA 516-01-653E INCLUDES:
 SAN TAN HEIGHTS PARCEL A-1: TRACTS A THRU C
 SAN TAN HEIGHTS PARCEL A-2: TRACTS A THRU D
 SAN TAN HEIGHTS PARCEL A-3: TRACTS A THRU C
 SAN TAN HEIGHTS PARCEL A-4: TRACTS A THRU C
 SAN TAN HEIGHTS PARCEL A-5: TRACTS A THRU C
 SAN TAN HEIGHTS PARCEL A-6: TRACTS A THRU C
 SAN TAN HEIGHTS PARCEL A-7: TRACTS A THRU C
 SAN TAN HEIGHTS PARCEL A-8: TRACTS A THRU D
 SAN TAN HEIGHTS PARCEL A-9: TRACTS A THRU C
 SAN TAN HEIGHTS PARCEL C-6: TRACTS A & B
 SAN TAN HEIGHTS PARCEL C-8: TRACTS A THRU C
 SAN TAN HEIGHTS PARCEL C-10: TRACTS A THRU C
 SAN TAN HEIGHTS PARCEL C-11: TRACTS A THRU C
 SAN TAN HEIGHTS PARCEL C-13: TRACT A

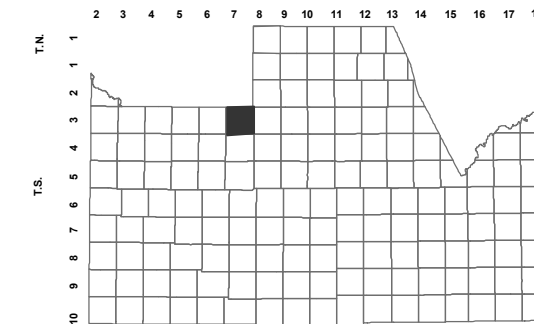
BOOK - MAP

509-95_10

SE SEC. 11 T.03S. R.07E.

SAN TAN HEIGHTS PARCELS A-9
 CAB E - SLD 118

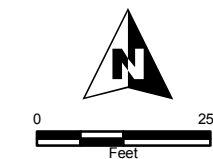
LOCATION MAPS
 R.E.



TOWNSHIP

6	5	4	3	2	1
7	8	9	10	11	12
18	17	16	15	14	13
19	20	21	22	23	24
30	29	28	27	26	25
31	32	33	34	35	36

SECTION



Revised: 2/22/2018

By: **MBG**



PINAL COUNTY

WIDE OPEN OPPORTUNITY

Pinal County Assessor

THIS MAP DOES NOT REPRESENT A SURVEY. NO LIABILITY IS ASSUMED FOR THE ACCURACY OF THE DATA DELINEATED HEREIN, EITHER EXPRESSED OR IMPLIED BY PINAL COUNTY OR ITS EMPLOYEES. THIS MAP IS COMPILED FROM OFFICIAL RECORDS, INCLUDING PLATS, SURVEYS, RECORDED DEEDS AND CONTRACTS, AND ONLY CONTAINS INFORMATION REQUIRED FOR THE PINAL COUNTY ASSESSOR'S OFFICE PURPOSES.