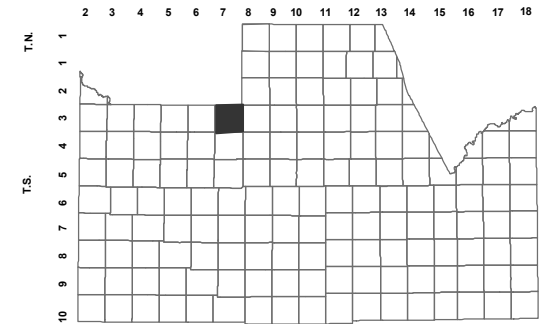


509-95_7

NW SEC. 13 T.03S. R.07E.

SAN TAN HEIGHTS PARCELS A-6
CAB E - SLD 120

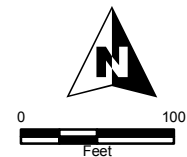
LOCATION MAPS
R.E.



TOWNSHIP

6	5	4	3	2	1
7	8	9	10	11	12
18	17	16	15	14	13
19	20	21	22	23	24
30	29	28	27	26	25
31	32	33	34	35	36

SECTION



Revised: 2/22/2018

By: **MBG**

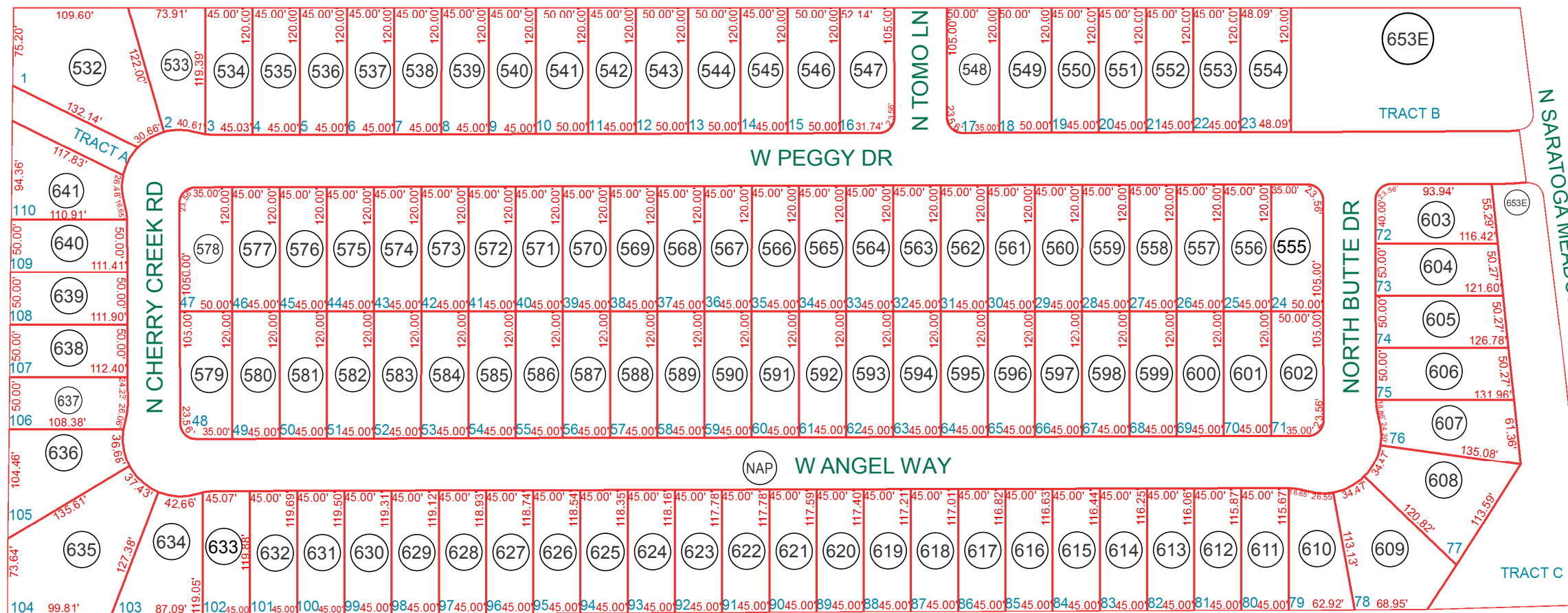


PINAL COUNTY
WIDE OPEN OPPORTUNITY

Pinal County Assessor

THIS MAP DOES NOT REPRESENT A SURVEY. NO LIABILITY IS ASSUMED FOR THE ACCURACY OF THE DATA DELINEATED HEREIN, EITHER EXPRESSED OR IMPLIED BY PINAL COUNTY OR ITS EMPLOYEES. THIS MAP IS COMPILED FROM OFFICIAL RECORDS, INCLUDING PLATS, SURVEYS, RECORDED DEEDS AND CONTRACTS, AND ONLY CONTAINS INFORMATION REQUIRED FOR THE PINAL COUNTY ASSESSOR'S OFFICE PURPOSES.

SEE MAP 509-95_6



SEE MAP 509-95_11

SEE MAP 509-95_9

SEE MAP 509-95_11

COMMON AREA 516-01-653E INCLUDES:

- SAN TAN HEIGHTS PARCEL A-1: TRACTS A THRU C
- SAN TAN HEIGHTS PARCEL A-2: TRACTS A THRU D
- SAN TAN HEIGHTS PARCEL A-3: TRACTS A THRU C
- SAN TAN HEIGHTS PARCEL A-4: TRACTS A THRU C
- SAN TAN HEIGHTS PARCEL A-5: TRACTS A THRU C
- SAN TAN HEIGHTS PARCEL A-6: TRACTS A THRU C
- SAN TAN HEIGHTS PARCEL A-7: TRACTS A THRU C
- SAN TAN HEIGHTS PARCEL A-8: TRACTS A THRU D
- SAN TAN HEIGHTS PARCEL A-9: TRACTS A THRU C
- SAN TAN HEIGHTS PARCEL C-6: TRACTS A & B
- SAN TAN HEIGHTS PARCEL C-8: TRACTS A THRU C
- SAN TAN HEIGHTS PARCEL C-10: TRACTS A THRU C
- SAN TAN HEIGHTS PARCEL C-11: TRACTS A THRU C
- SAN TAN HEIGHTS PARCEL C-13: TRACT A

- SAN TAN HEIGHTS PARCEL C-7: TRACTS A THRU C ARE UNDER APN 516-01-653B
- SAN TAN HEIGHTS PARCEL C-9: TRACTS A THRU C ARE UNDER APN 516-01-653C
- SAN TAN HEIGHTS PARCEL C-12: TRACTS A THRU F ARE UNDER APN 516-01-653D