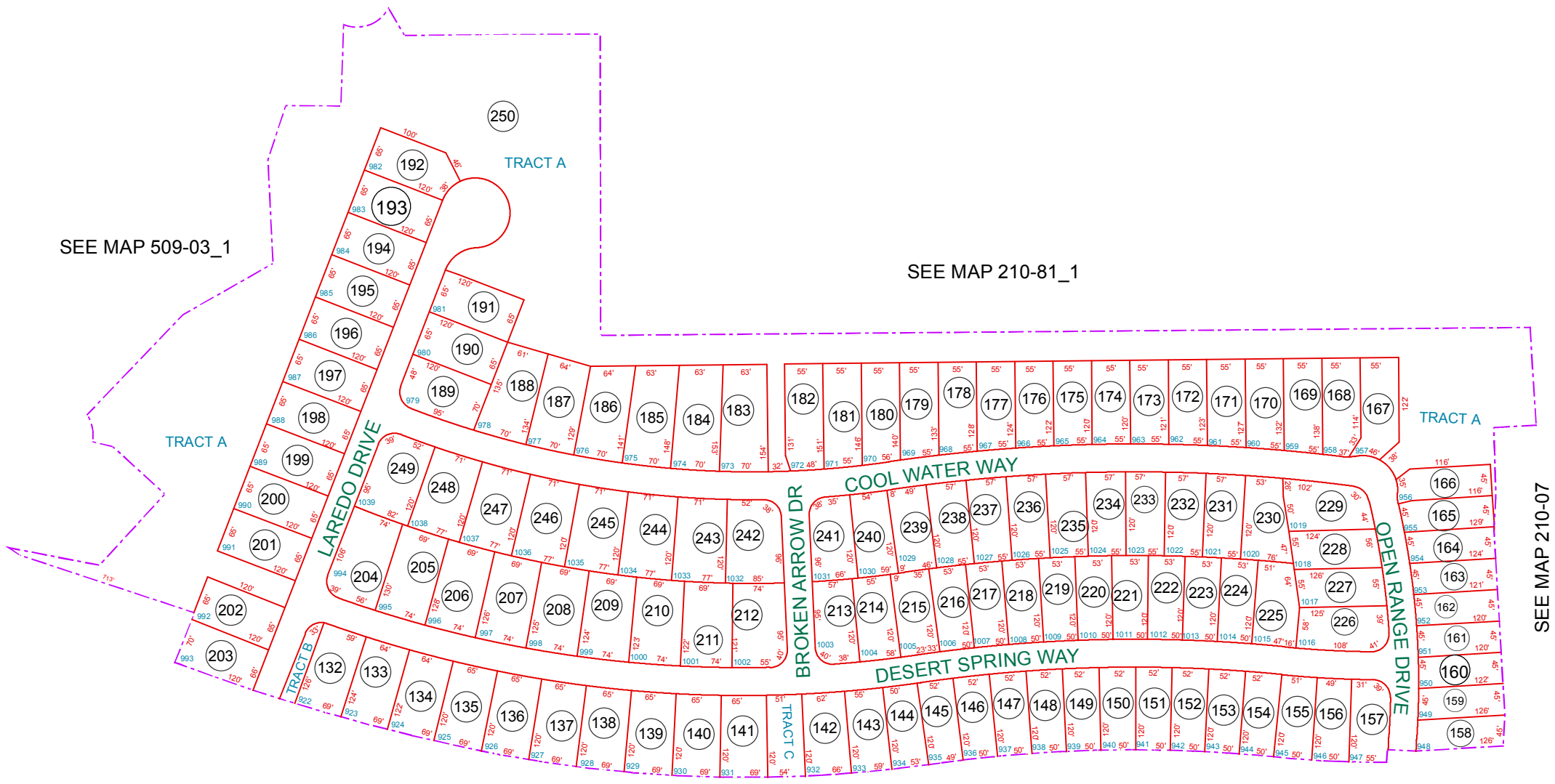


MORNING SUN FARMS UNIT 4A
TRACTS A B & C UNDER PARCEL:
509-98-250



SEE MAP 509-03_1

SEE MAP 210-81_1

SEE MAP 210-07

SEE MAP 509-94_5 - 7

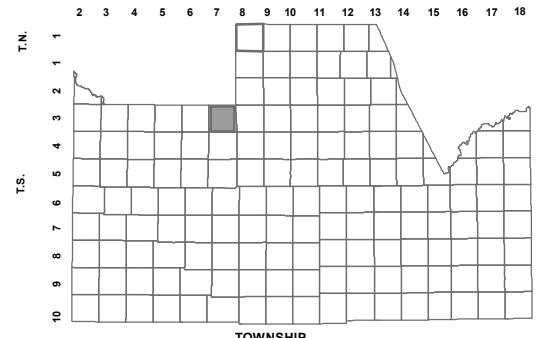
BOOK - MAP

509-98_2

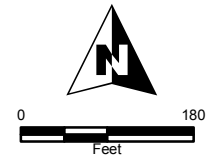
N2 SE SEC. 01 T.03S. R.07E.

MORNING SUN FARMS UNIT 4A: 2011-056705

LOCATION MAPS
R.E.



6	5	4	3	2	1
7	8	9	10	11	12
18	17	16	15	14	13
19	20	21	22	23	24
30	29	28	27	26	25
31	32	33	34	35	36



Revised: 7/19/2012

By: MBG



PINAL COUNTY
wide open opportunity

Pinal County Assessor

THIS MAP DOES NOT REPRESENT A SURVEY. NO LIABILITY IS ASSUMED FOR THE ACCURACY OF THE DATA DELINEATED HEREIN, EITHER EXPRESSED OR IMPLIED BY PINAL COUNTY OR ITS EMPLOYEES. THIS MAP IS COMPILED FROM OFFICIAL RECORDS, INCLUDING PLATS, SURVEYS, RECORDED DEEDS AND CONTRACTS, AND ONLY CONTAINS INFORMATION REQUIRED FOR THE PINAL COUNTY ASSESSOR'S OFFICE PURPOSES.