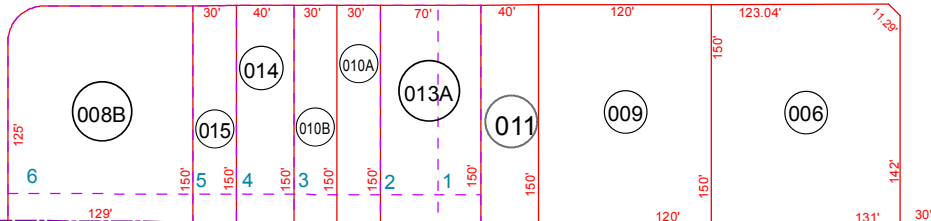
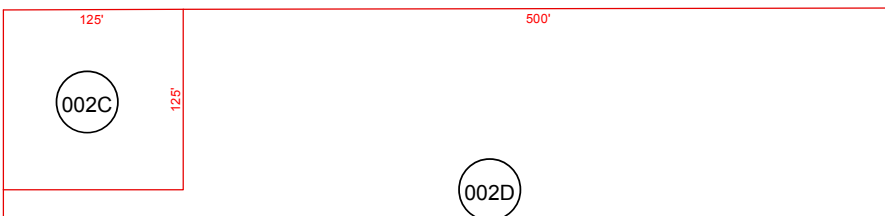


SEE BOOK 504

COTTONWOOD LANE

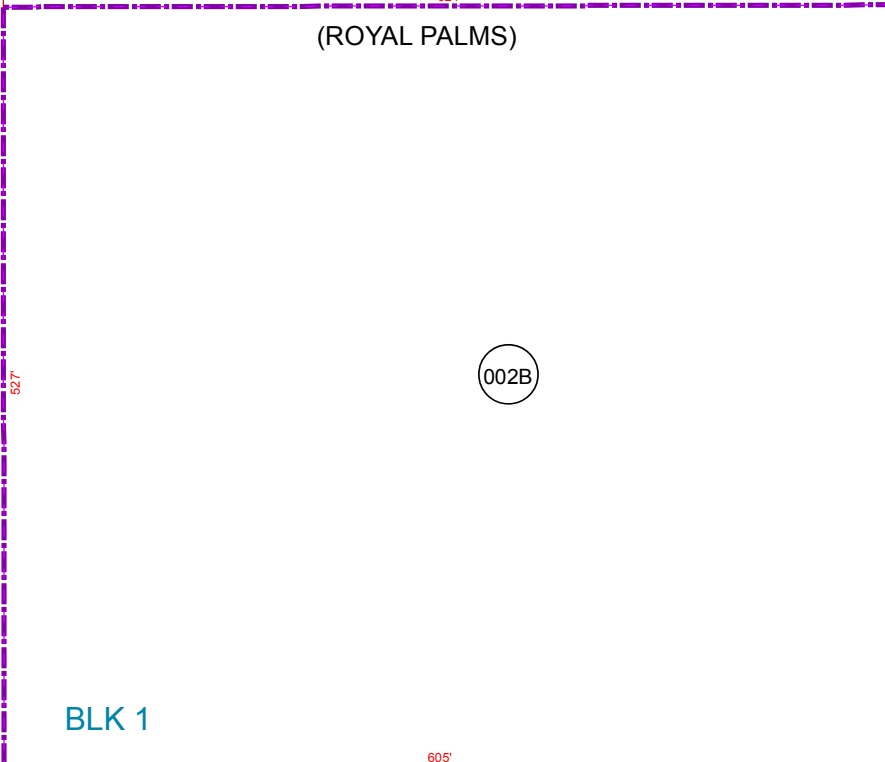
CITY OF CASA GRANDE (PARK NORTH)



(ROYAL PALMS)

CASA DE TOPAZ CONDOMINIUM SEE MAP 506-02_2-3

SEE MAP 506-01
CASA GRANDE AVE

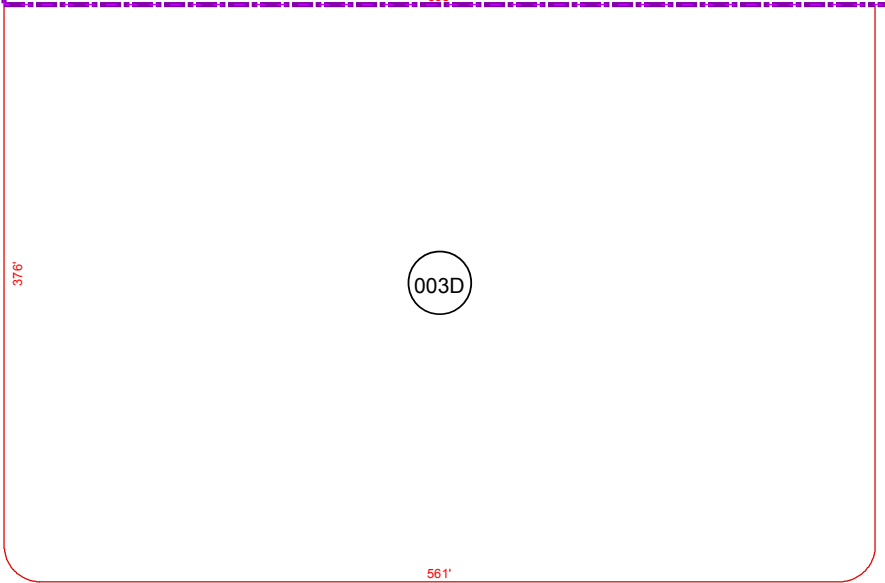


MORRISON AVE

KADOTA AVE
SEE MAP 506-10

AGUA DEL ORO AMD. SEE MAP 506-13

CITY OF CASA GRANDE



CITY OF CASA GRANDE NAP

SEE MAP 506-03 MELROSE DRIVE

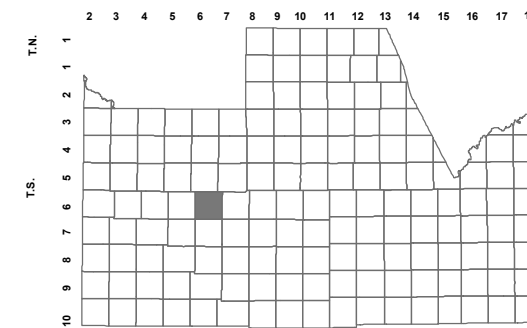
BOOK - MAP

506-02_1

NW NE SEC. 20 T.06S. R.06E.

ROYAL ARMS: BOOK 16 - PAGE 043
PARK NORTH: CAB A - SLIDE 145

LOCATION MAPS
R.E.



TOWNSHIP

6	5	4	3	2	1
	RODED RD				
7	8	9	10	11	12
	TREKELL RD	PEARL RD	KORTSEN RD		
18	17	16	15	14	13
	FINAL AVE	COTTONWOOD LN			
19	20	21	22	23	24
	MURRAY RD	FLORENCE BLVD	HENNESSY RD		
30	29	28	27	26	25
	CHURCH RD	PETERS RD			
31	32	33	34	35	36
	SELMA HWY				



Revised: 9/29/2015

By: **TH**



PINAL COUNTY
wide open opportunity

Pinal County Assessor

THIS MAP DOES NOT REPRESENT A SURVEY. NO LIABILITY IS ASSUMED FOR THE ACCURACY OF THE DATA DELINEATED HEREIN, EITHER EXPRESSED OR IMPLIED BY PINAL COUNTY OR ITS EMPLOYEES. THIS MAP IS COMPILED FROM OFFICIAL RECORDS, INCLUDING PLATS, SURVEYS, RECORDED DEEDS AND CONTRACTS, AND ONLY CONTAINS INFORMATION REQUIRED FOR THE PINAL COUNTY ASSESSOR'S OFFICE PURPOSES.