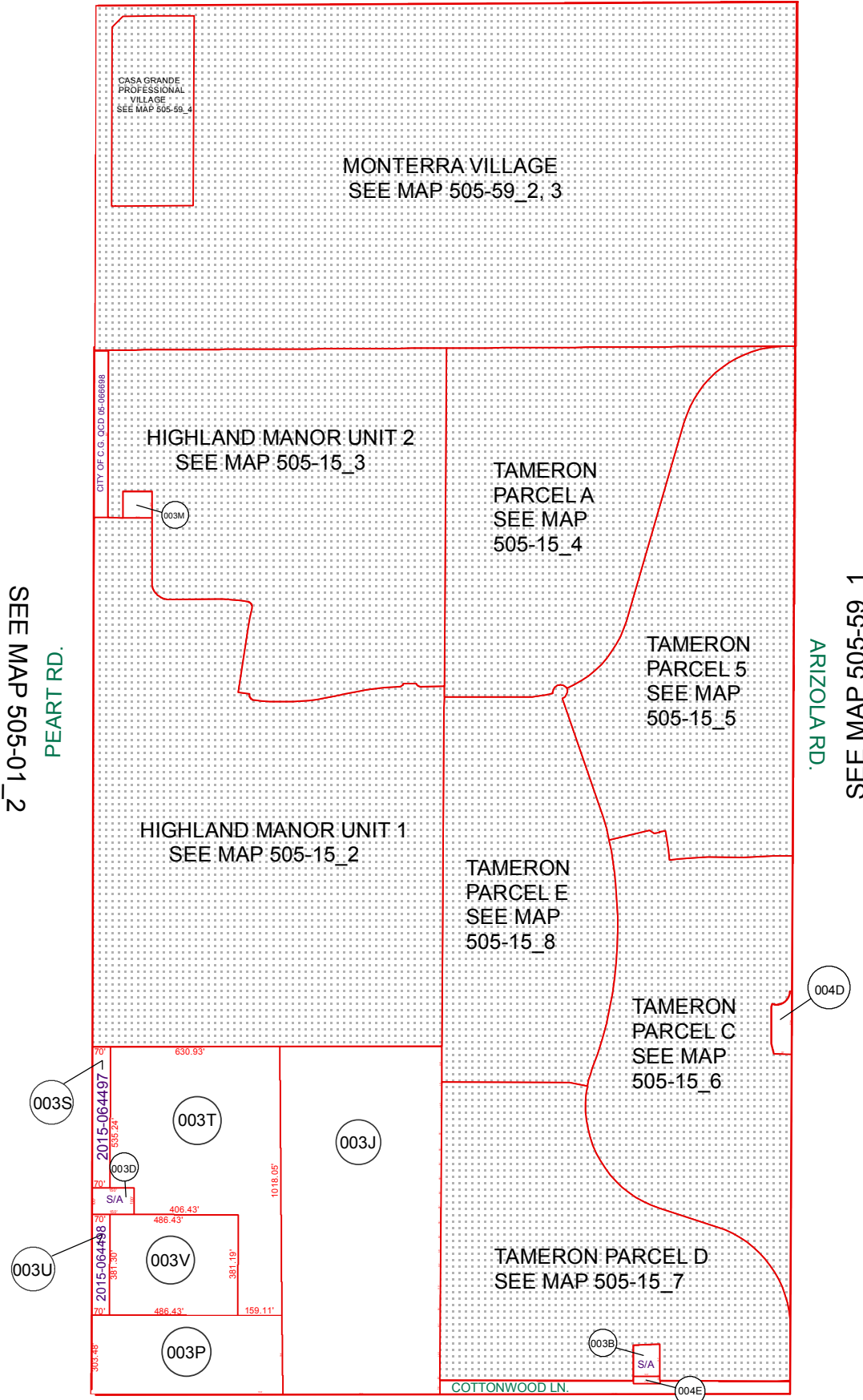


SEE MAP 505-10
KORTSEN RD.



SEE MAP 505-01_2
PEART RD.

SEE MAP 505-59_1
ARIZOLA RD.

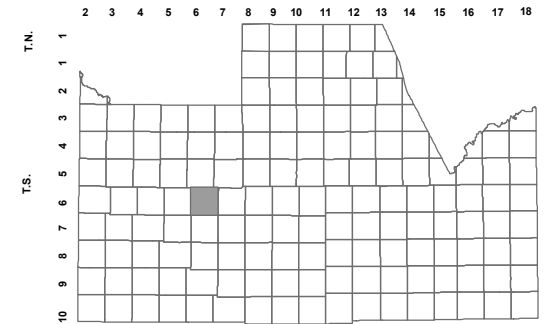
SEE MAP 505-22_1

BOOK - MAP

505-15_1

W2 SEC. 15 T.06S. R.06E.
MAP OF DEDICATION OF PEART RD (MARY T)
2015-064497
MAP OF DEDICATION OF PEART RD (CALICHE)
2015-064498

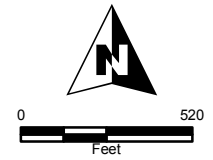
LOCATION MAPS
R.E.



TOWNSHIP
McCARTNEY RD

6	5	4	3	2	1
7	8	9	10	11	12
18	17	16	15	14	13
19	20	21	22	23	24
30	29	28	27	26	25
31	32	33	34	35	36

SECTION



Revised: 10/21/2015

By: *YL*



PINAL COUNTY
wide open opportunity

Pinal County Assessor

THIS MAP DOES NOT REPRESENT A SURVEY. NO LIABILITY IS ASSUMED FOR THE ACCURACY OF THE DATA DELINEATED HEREIN, EITHER EXPRESSED OR IMPLIED BY PINAL COUNTY OR ITS EMPLOYEES. THIS MAP IS COMPILED FROM OFFICIAL RECORDS, INCLUDING PLATS, SURVEYS, RECORDED DEEDS AND CONTRACTS, AND ONLY CONTAINS INFORMATION REQUIRED FOR THE PINAL COUNTY ASSESSOR'S OFFICE PURPOSES.