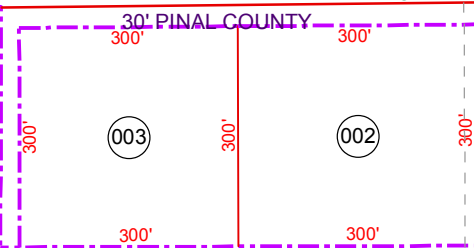


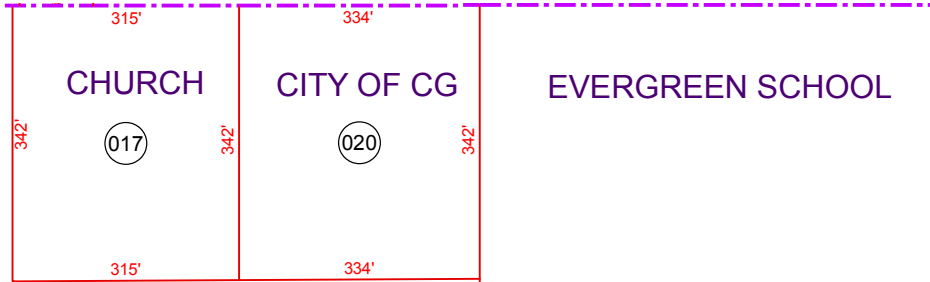
SEE MAP 505-18

McMURRAY BLVD



GILBERT ACRES

SEE MAP 505-21



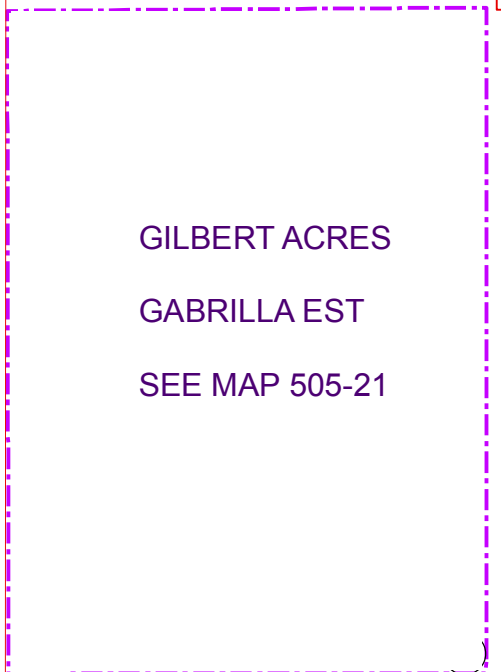
CHURCH

CITY OF CG

EVERGREEN SCHOOL

SEE MAP 505-42

SEE MAP 104-60



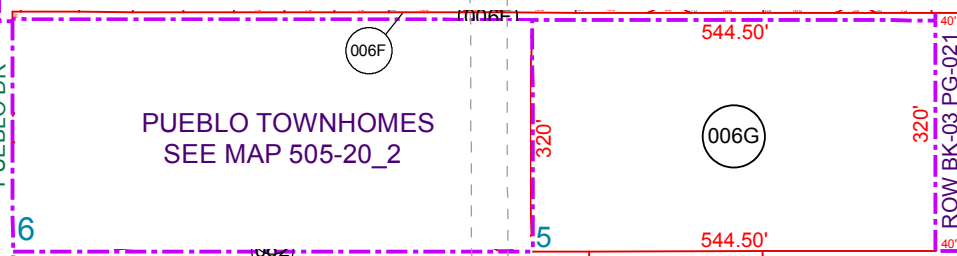
GILBERT ACRES

GABRILLA EST

SEE MAP 505-21

SEE MAP 505-43

SEE MAP 505-16



PUEBLO TOWNHOMES  
SEE MAP 505-20\_2

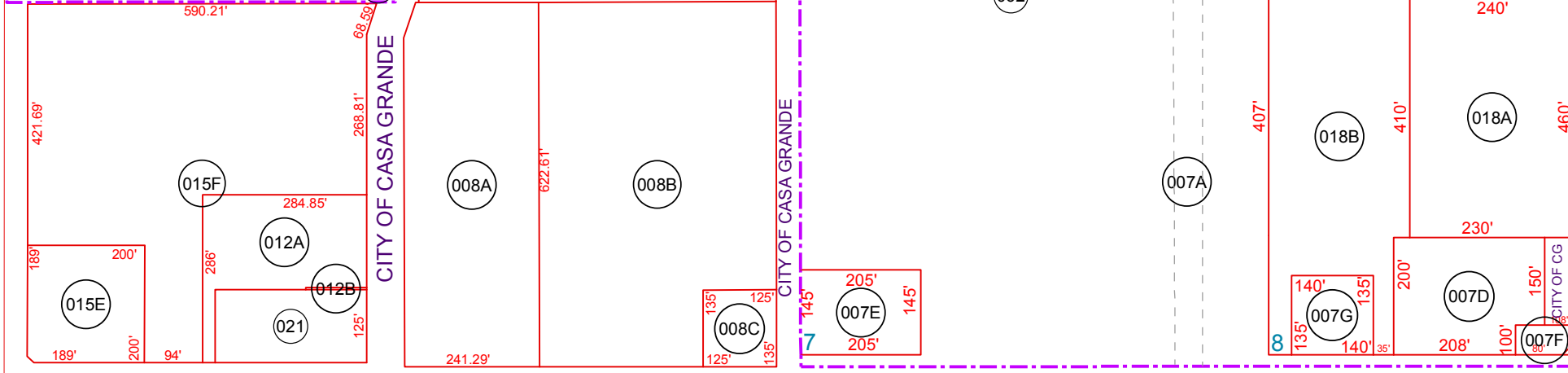
TREKELL RD

PUEBLO DR

CITY OF CASA GRANDE

CITY OF CASA GRANDE

SEE MAP 505-16



FLORENCE BLVD/HWY 287

SEE MAP 505-30

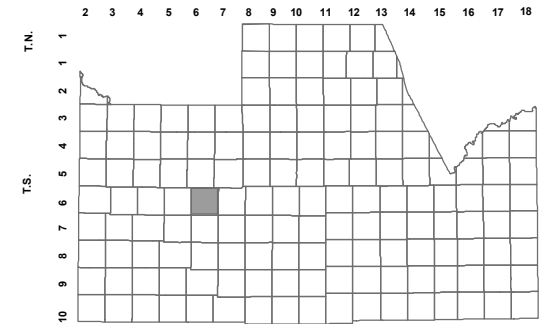
BOOK - MAP

# 505-20\_1

SEC. 21 T.06S. R.06E.

CASA GRANDE FARMS UNIT 1  
BK 03- PG 021

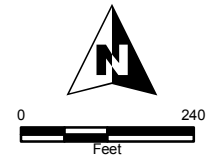
LOCATION MAPS  
R.E.



TOWNSHIP  
McCARTNEY RD

6	5	4	3	2	1
7	8	9	10	11	12
18	17	16	15	14	13
19	20	21	22	23	24
30	29	28	27	26	25
31	32	33	34	35	36

SECTION



Revised: 4/14/2014

By: \*KG\*



PINAL COUNTY  
wide open opportunity

Pinal County Assessor

THIS MAP DOES NOT REPRESENT A SURVEY. NO LIABILITY IS ASSUMED FOR THE ACCURACY OF THE DATA DELINEATED HEREIN, EITHER EXPRESSED OR IMPLIED BY PINAL COUNTY OR ITS EMPLOYEES. THIS MAP IS COMPILED FROM OFFICIAL RECORDS, INCLUDING PLATS, SURVEYS, RECORDED DEEDS AND CONTRACTS, AND ONLY CONTAINS INFORMATION REQUIRED FOR THE PINAL COUNTY ASSESSOR'S OFFICE PURPOSES.