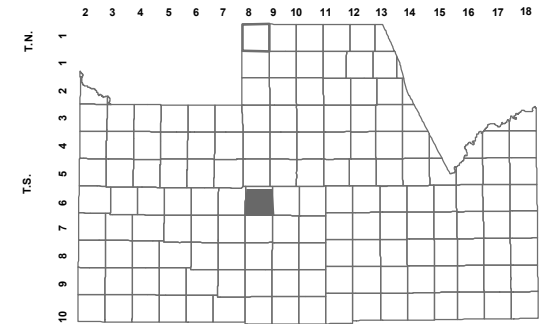


505-22_2

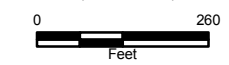
SE SEC. 22 T.06S. R.06E.

LOCATION MAPS
R.E.



TOWNSHIP

MCCARTNEY RD					
6	5	4	3	2	1
HWY 387/PINAL AVE		TREKEL RD	RODEO RD		
7	8	9	10	11	12
		PEART RD	KORTSEN RD		
18	17	16	15	14	13
HWY 238/COTTONWOOD LN/ STOREY RD					
19	20	21	22	23	24
FLORENCE BLVD / HWY 287					
30	29	28	27	26	25
31	32	33	34	35	36
SECTION					



Revised: 6/13/2012

By: YL



PINAL COUNTY
wide open opportunity

Pinal County Assessor

THIS MAP DOES NOT REPRESENT A SURVEY. NO LIABILITY IS ASSUMED FOR THE ACCURACY OF THE DATA DELINEATED HEREIN, EITHER EXPRESSED OR IMPLIED BY PINAL COUNTY OR ITS EMPLOYEES. THIS MAP IS COMPILED FROM OFFICIAL RECORDS, INCLUDING PLATS, SURVEYS, RECORDED DEEDS AND CONTRACTS, AND ONLY CONTAINS INFORMATION REQUIRED FOR THE PINAL COUNTY ASSESSOR'S OFFICE PURPOSES.

SEE MAP 505-22_1

SANDALWOOD PHASE II

VILLA DE JARDINES PHASE II
SEE MAP 505-76_2

SEE MAP 505-69

SANDALWOOD PHASE I

SANDALWOOD PHASE III
SEE MAP 505-80

VILLA DE JARDINES PHASE I
SEE MAP 505-76_1

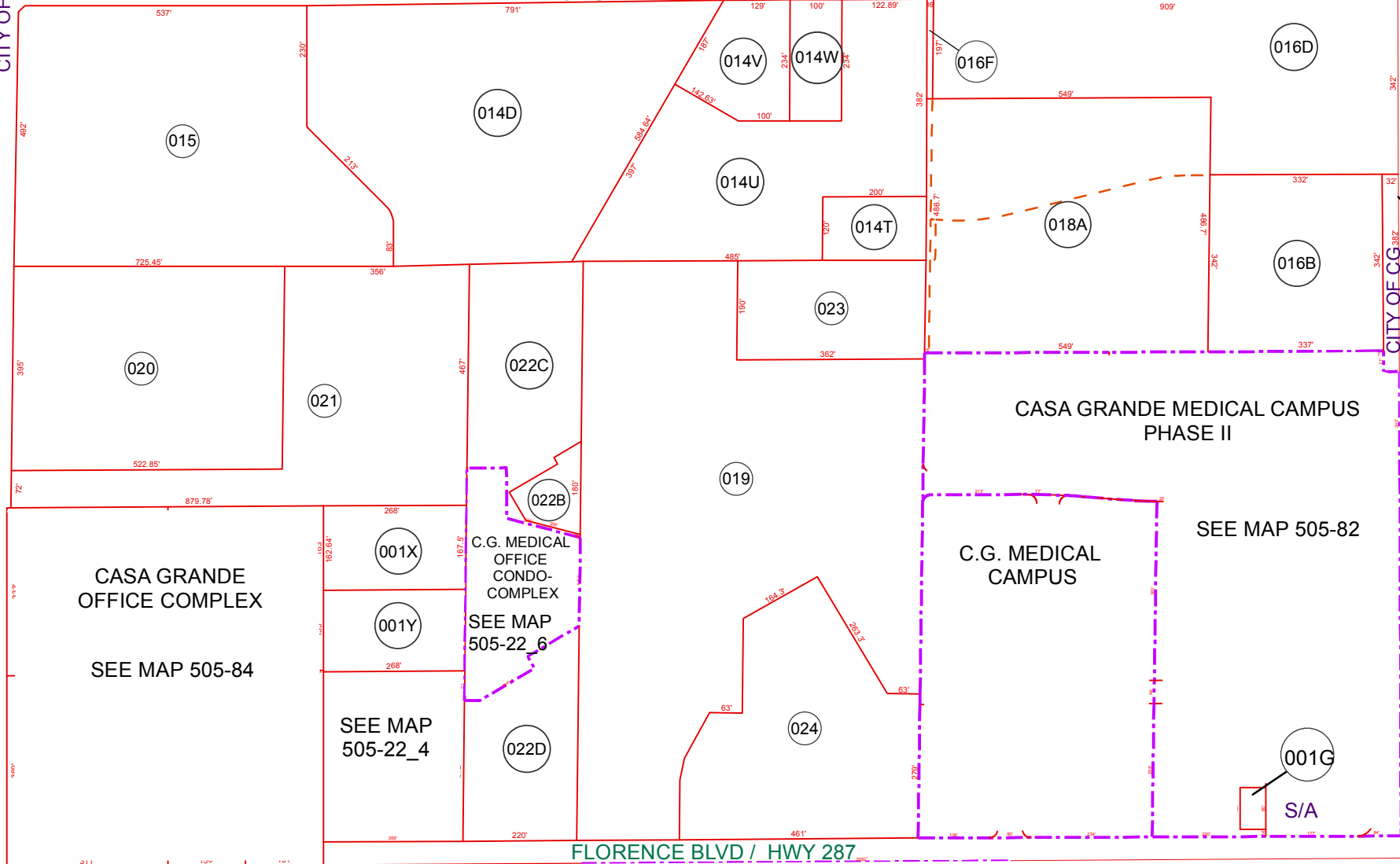
MCMURRAY ROAD

HENNESSY ROAD

SEE MAP 505-22_3

ARIZOLA ROAD
CITY OF CASA GRANDE

SEE MAP 505-23



FLORENCE BLVD / HWY 287

SEE MAP 505-27

CASA GRANDE MEDICAL CAMPUS
PHASE II

C.G. MEDICAL
CAMPUS

CASA GRANDE
OFFICE COMPLEX

C.G. MEDICAL
OFFICE
CONDO-
COMPLEX

SEE MAP 505-84

SEE MAP
505-22_4

SEE MAP 505-82

001G

S/A