

SEC. 22 SE TN.6S RG.6E

SEE MAP 505-22_2

505-22_6

AREA CODE
0000

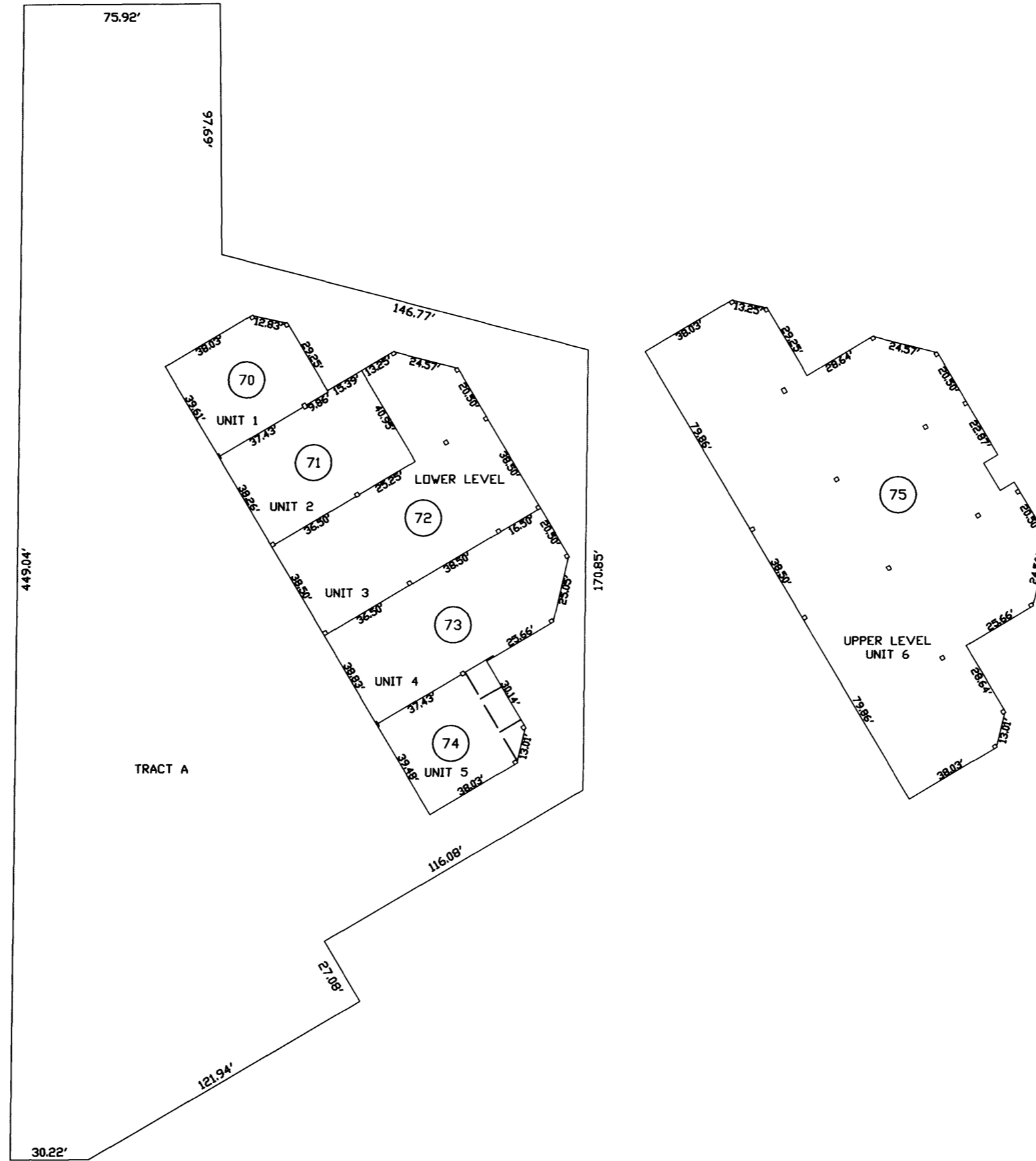
SPECIAL DISTRICTS
00000
00000

CASA GRANDE MEDICAL OFFICE
CONDOMINIUM COMPLEX
BUILDING NO. 1
CAB E - SLD 069

THIS MAP IS FOR TAX PURPOSES ONLY.

THIS OFFICE WILL NOT ASSUME LIABILITY FOR
REPRESENTATION, MEASUREMENTS OR ACREAGE.

SEE MAP 505-22_2



SEE MAP 505-22_2

VICINITY MAP

MCCARTNEY RD					
6	5	4	3	2	1
HWY 387 / PINAL AVE		RODEO RD			
7	8	9	10	11	12
TREKELL RD		PEART RD			
18	17	16	15	14	13
HWY 238 / COTTONWOOD LN		KORTSEN RD		STOREY RD	
19	20	21	22	23	24
FLORENCE BLVD / HWY 287					
30	29	28	27	26	25
JIMMIE KERR BLVD					
31	32	33	34	35	36



SCALE: 1" = 50'

06-25-2004

SEE MAP 505-22_2