

SEC. 21 N2 TN.6S RG.6E

505-64

AREA CODE
0000

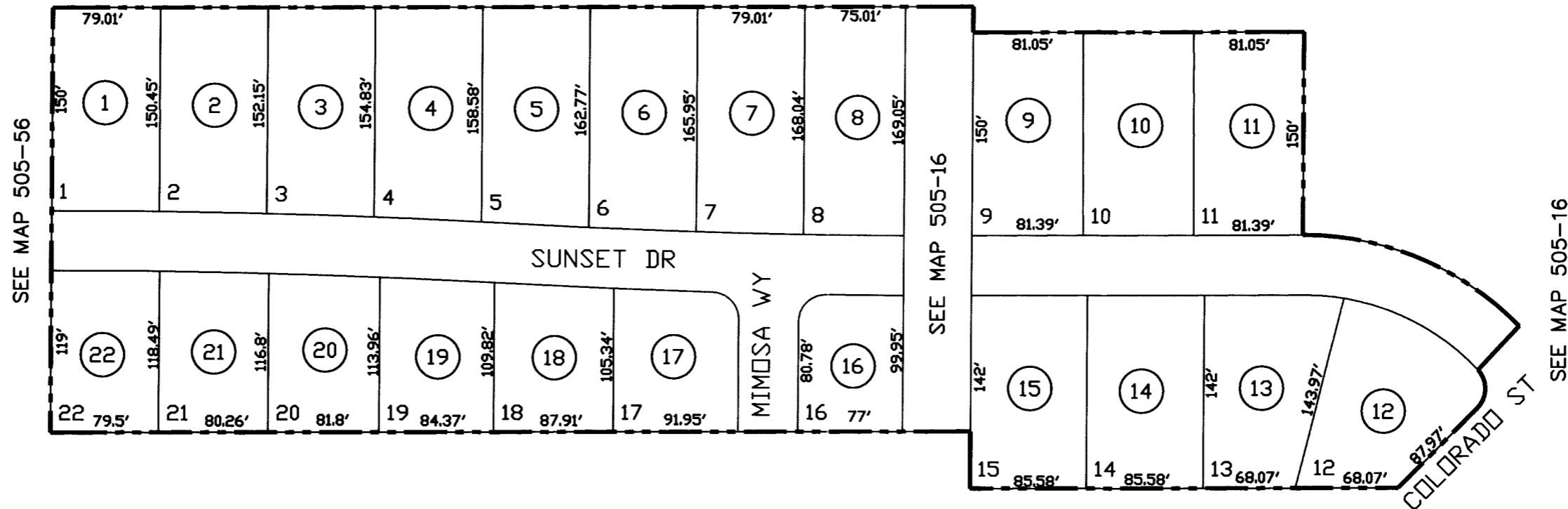
SUNSET ESTATES
CAB B - SLIDE 087

SPECIAL DISTRICTS
00000
00000

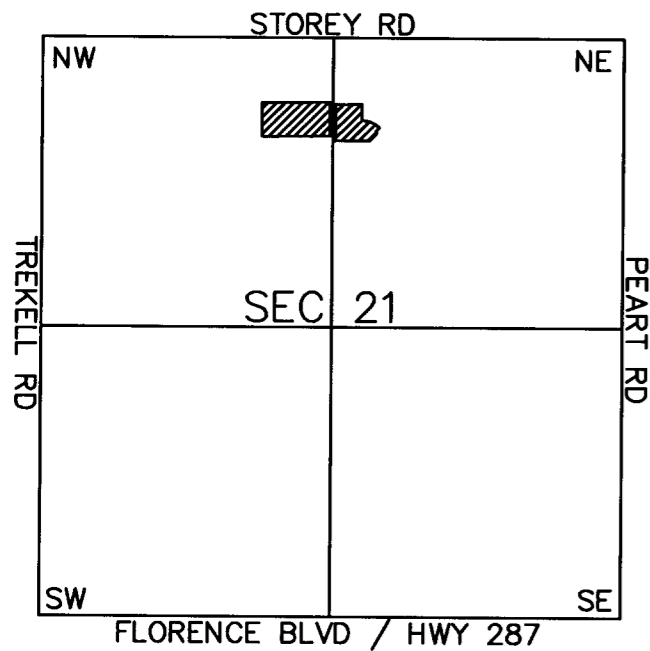
SEE MAP 505-16

THIS MAP IS FOR TAX PURPOSES ONLY.
THIS OFFICE WILL NOT ASSUME LIABILITY FOR
REPRESENTATION, MEASUREMENTS OR ACREAGE.

THE ORIGINAL PLAT OF THIS SUBDIVISION IS
ON FILE WITH THE PINAL COUNTY RECORDERS
OFFICE, FOR COMPLETE INFORMATION OF PLAT
AND CC&R's CALL (520) 868-7100.



VICINITY MAP



SEE MAP 505-77

SCALE: 1" = 100'

03-28-2003