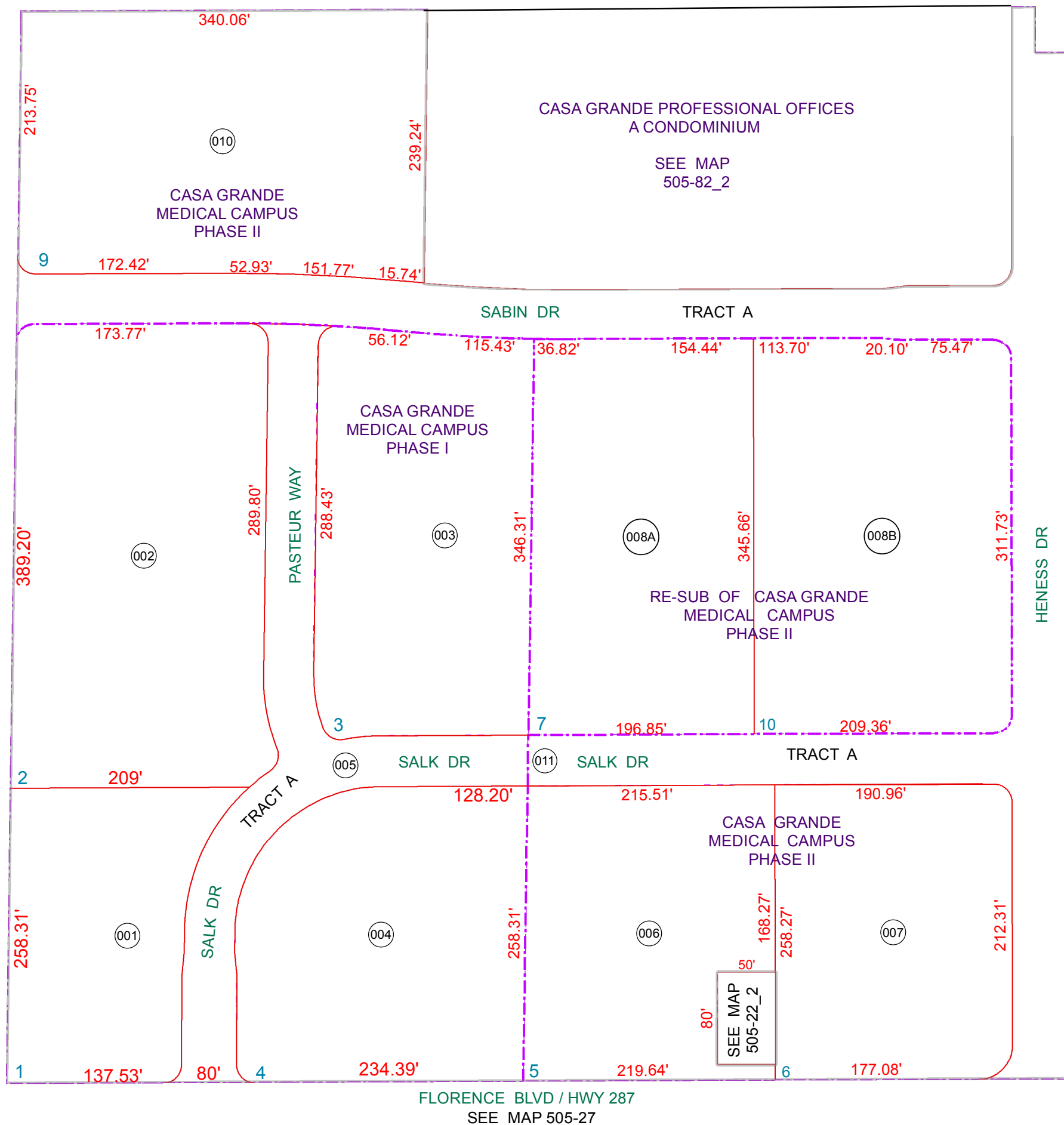


SEE MAP 505-22\_2



SEE MAP 505-22\_2

SEE MAP 505-23

FLORENCE BLVD / HWY 287  
SEE MAP 505-27

BOOK - MAP

# 505-82\_1

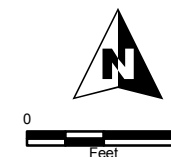
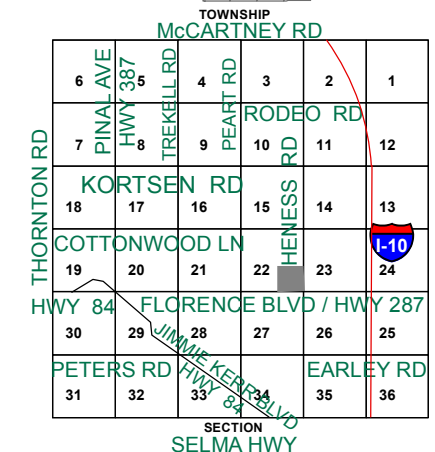
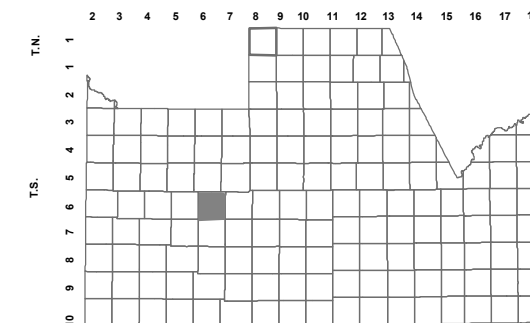
## SE SEC. 22 T.06S. R.06E.

CASA GRANDE MEDICAL CAMPUS PHASE I:  
CABINET C - SLIDE 137

CASA GRANDE MEDICAL CAMPUS PHASE II:  
CABINET D - SLIDE 61

RE-SUBDIVISION OF CASA GRANDE MEDICAL  
CAMPUS PHASE II: 2013-077476

LOCATION MAPS  
R.E.



Revised: 10/16/2013

By: YL



PINAL COUNTY  
*wide open opportunity*

**Pinal County Assessor**

THIS MAP DOES NOT REPRESENT A SURVEY. NO LIABILITY IS ASSUMED FOR THE ACCURACY OF THE DATA DELINEATED HEREIN, EITHER EXPRESSED OR IMPLIED BY PINAL COUNTY OR ITS EMPLOYEES. THIS MAP IS COMPILED FROM OFFICIAL RECORDS, INCLUDING PLATS, SURVEYS, RECORDED DEEDS AND CONTRACTS, AND ONLY CONTAINS INFORMATION REQUIRED FOR THE PINAL COUNTY ASSESSOR'S OFFICE PURPOSES.