

AREA CODE  
0408

SPECIAL DISTRICTS  
24001

# SEC. 21 TN.06S RG.06E

# 505-86

## GARRETT ESTATES CAB "D" SLIDE 012

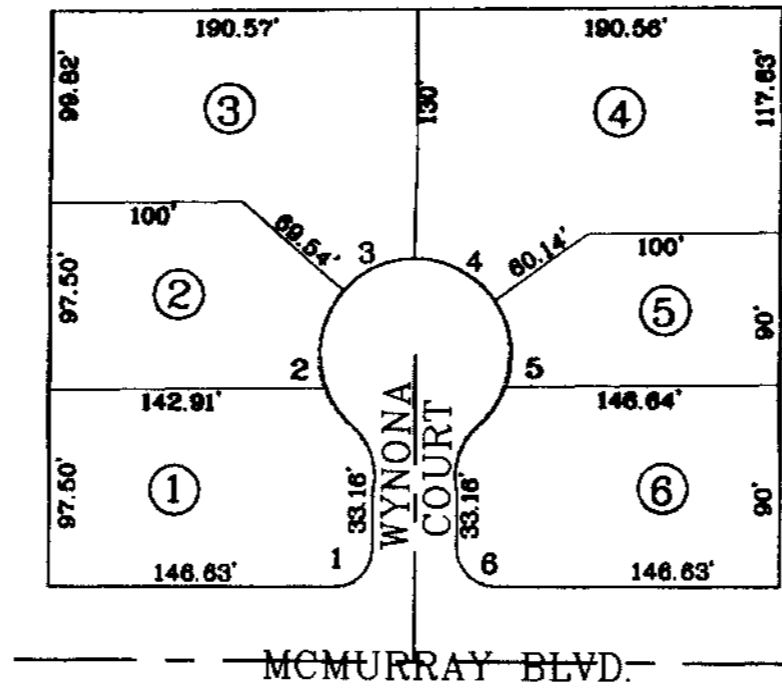
THIS MAP IS FOR TAX PURPOSES ONLY.

THIS OFFICE WILL NOT ASSUME LIABILITY FOR  
REPRESENTATION, MEASUREMENTS OR ACREAGE.

THE ORIGINAL PLAT OF THIS SUBDIVISION IS  
ON FILE WITH THE PINAL COUNTY RECORDERS  
OFFICE, FOR COMPLETE INFORMATION OF PLAT  
AND CC&M's CALL (520) 868-7100.

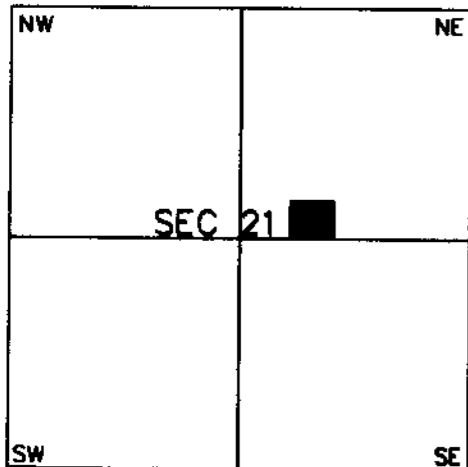
SEE MAP 505-16

SEE MAP 505-16



SEE MAP 505-16

### VICINITY MAP



SEE MAP 505-16



SCALE: 1" = 100'

07-12-2001