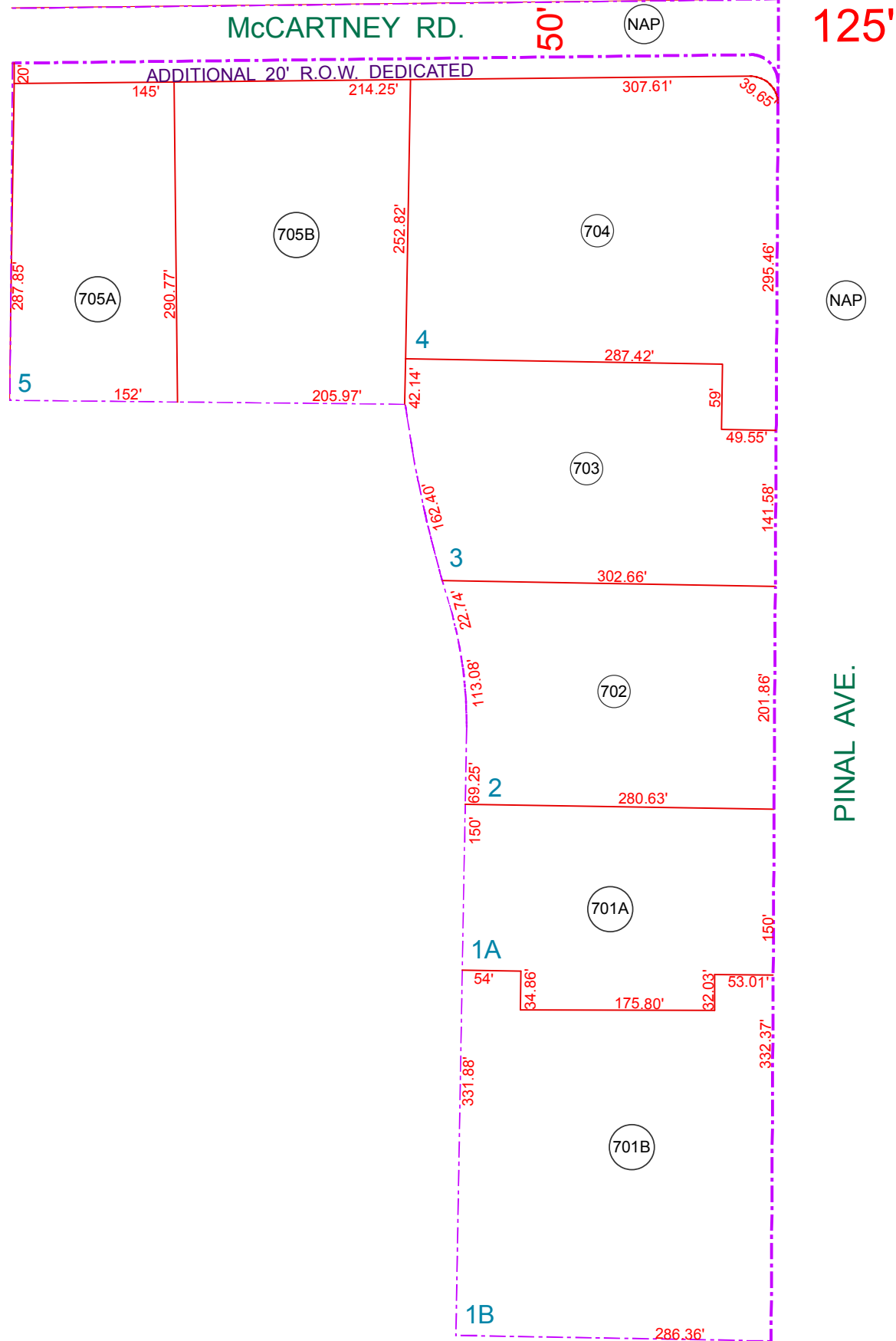


SEE MAP 509-57

NE COR
SEC 6

SEE MAP 504-31_2



SEE MAP 504-02

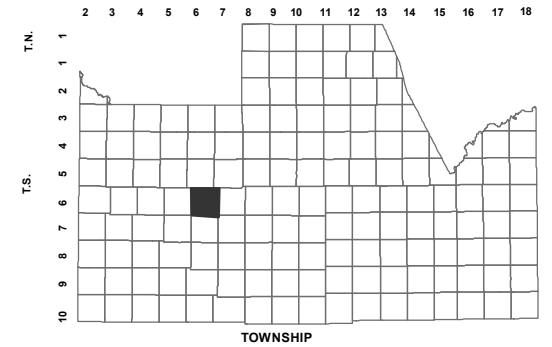
SEE MAP 504-31_2

BOOK - MAP

504-31_3

NE NE SEC. 6 T.06S. R.06E.
 VILLAGO VILLAGE
 COMMERCIAL CENTER
 CAB H - SLD 047
 VILLAGO VILLAGE COMMERCIAL CENTER
 LOTS 1A AND 1B
 2011 - 069622

LOCATION MAPS
R.E.



6	5	4	3	2	1
7	8	9	10	11	12
18	17	16	15	14	13
19	20	21	22	23	24
30	29	28	27	26	25
31	32	33	34	35	36

SECTION



Revised: 11/8/2012

By: **TH**



PINAL COUNTY
wide open opportunity

Pinal County Assessor

THIS MAP DOES NOT REPRESENT A SURVEY. NO LIABILITY IS ASSUMED FOR THE ACCURACY OF THE DATA DELINEATED HEREIN, EITHER EXPRESSED OR IMPLIED BY PINAL COUNTY OR ITS EMPLOYEES. THIS MAP IS COMPILED FROM OFFICIAL RECORDS, INCLUDING PLATS, SURVEYS, RECORDED DEEDS AND CONTRACTS, AND ONLY CONTAINS INFORMATION REQUIRED FOR THE PINAL COUNTY ASSESSOR'S OFFICE PURPOSES.