

SEC. 17 NESW TN.6S RG.6E

504-37

AREA CODE
0000

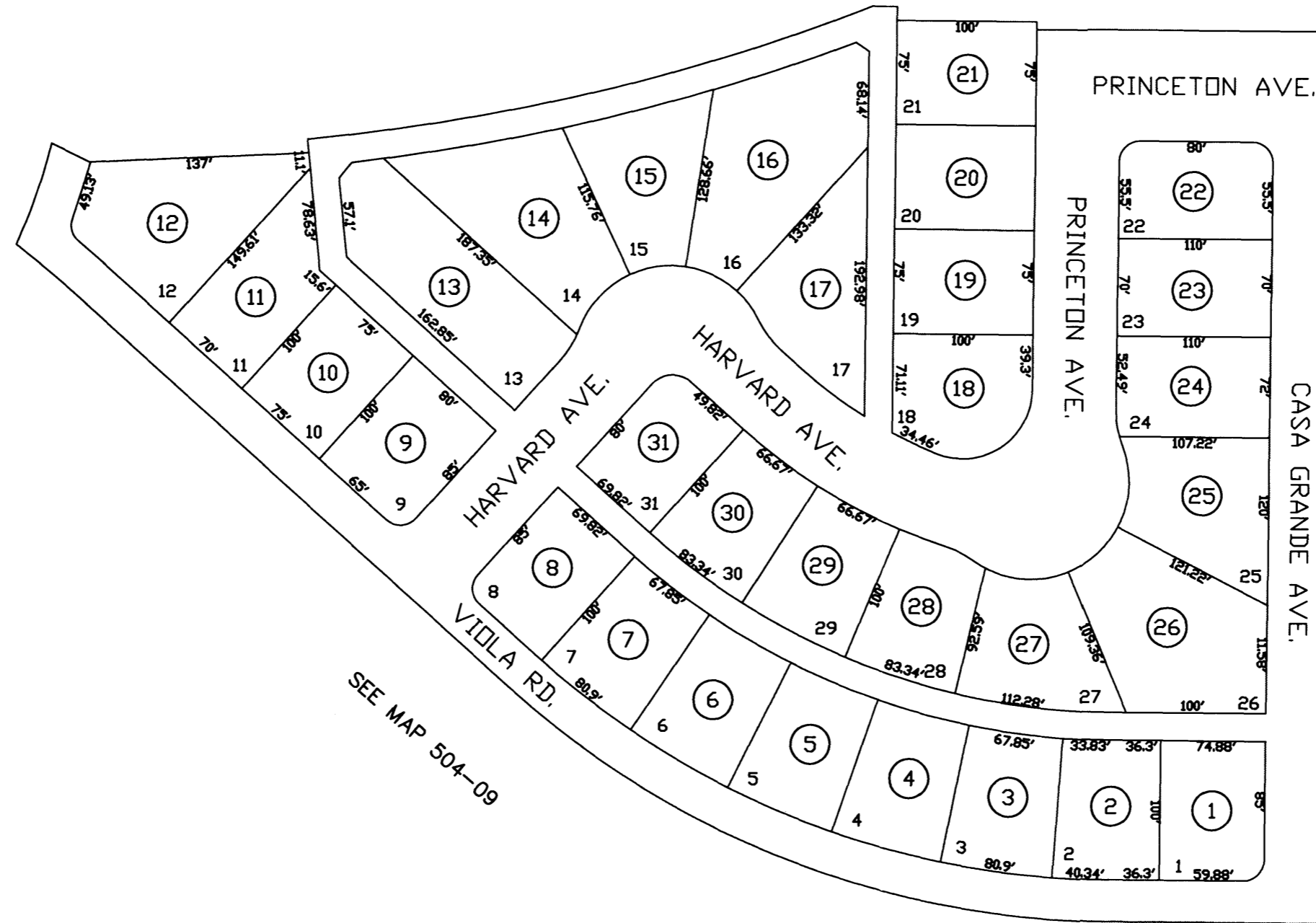
SPECIAL DISTRICTS
00000
00000

SEE MAP 504-52

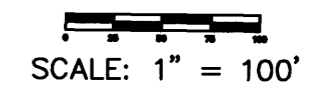
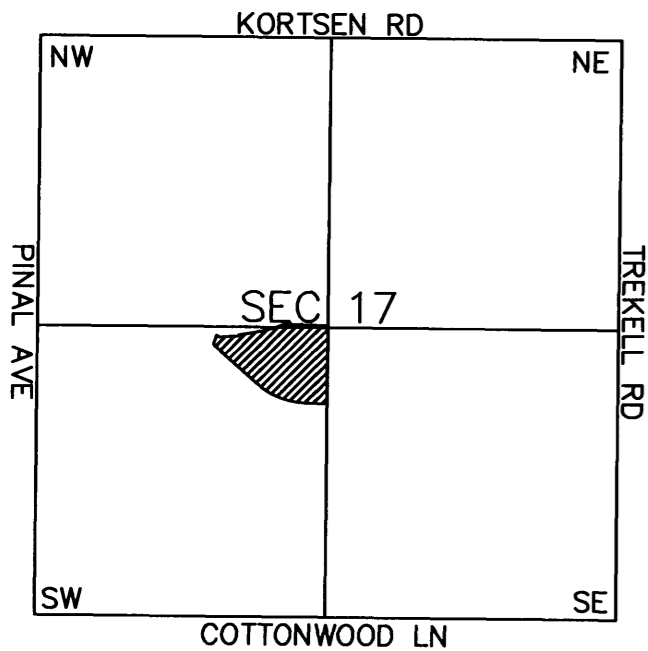
COLLEGE PARK 9
UNIT 1
BK 19 - PG 037

THIS MAP IS FOR TAX PURPOSES ONLY.
THIS OFFICE WILL NOT ASSUME LIABILITY FOR
REPRESENTATION, MEASUREMENTS OR ACREAGE.

THE ORIGINAL PLAT OF THIS SUBDIVISION IS
ON FILE WITH THE PINAL COUNTY RECORDERS
OFFICE, FOR COMPLETE INFORMATION OF PLAT
AND CC&R's CALL (520) 868-7100.



VICINITY MAP



04-16-2003