

SEC. 8 TN.6S RG.6E

SEE MAP 504-02

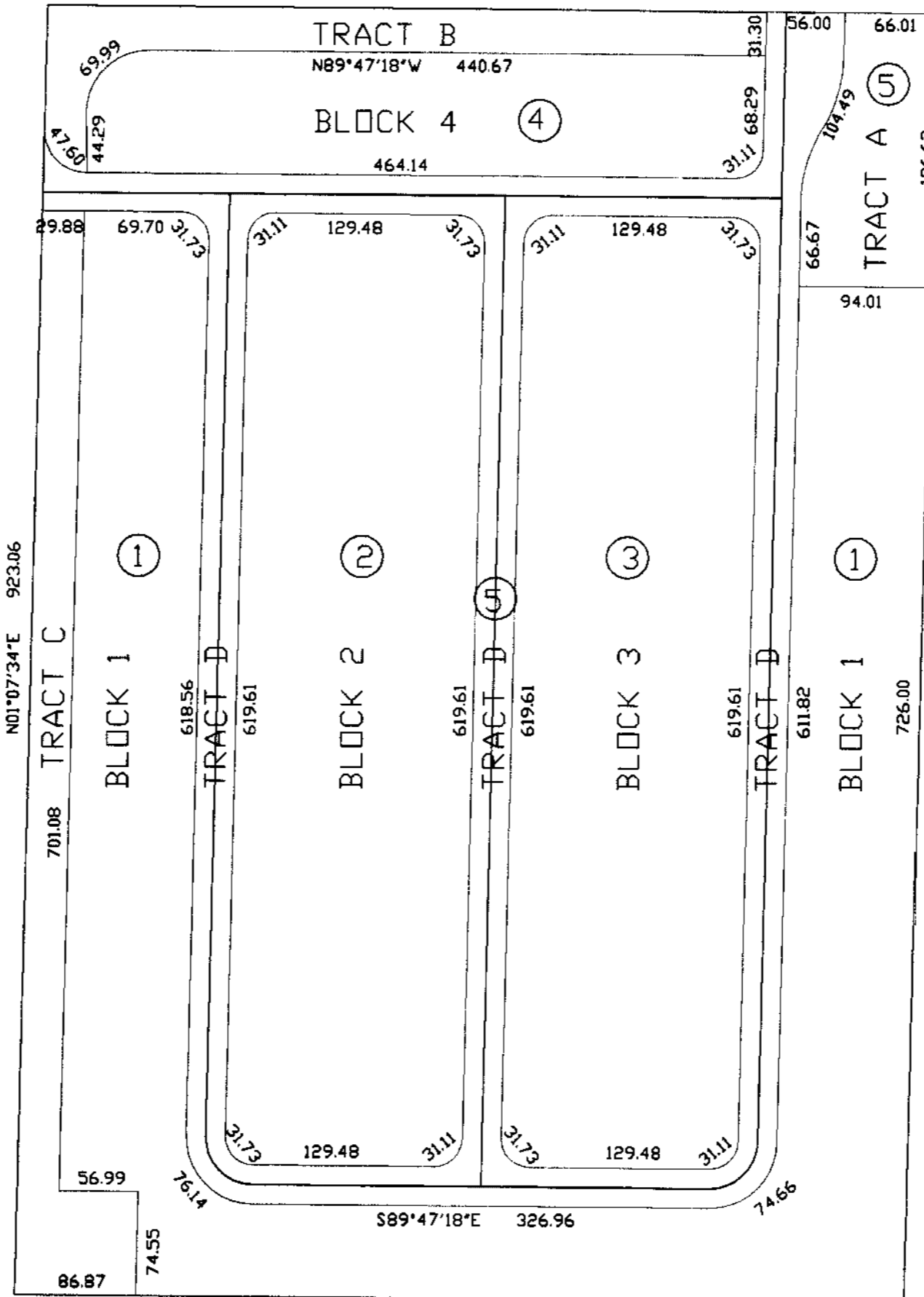
AREA CODE
0486

SPECIAL DISTRICTS
24001

PARCEL NUMBER	SQUARE FEET	ACRES	DEED ACRES
001	142,297	3.24	
002	115,074	2.64	
003	115,064	2.64	
004	42,231	.97	
005	124,124	2.89	

RODEO ROAD

S89°44'58"E 636.79



SEE MAP 504-08

SEE MAP 504-08

504-64

RODEO ESTATES
LILLIAN W. PEART
SUBDIVISION



SCALE: 1" = 100'

02-04-2000

NOTES:

- THIS MAP IS FOR TAX PURPOSES ONLY.
- THIS OFFICE WILL NOT ASSUME LIABILITY FOR REPRESENTATION, MEASUREMENTS OR ACREAGE.
- LOT AND PARCEL NUMBERS ARE THE SAME.
- THE ORIGINAL PLAT OF THIS SUBDIVISION IS ON FILE WITH THE PINAL COUNTY RECORDERS OFFICE, FOR COMPLETE INFORMATION OF PLAT AND CC&R'S CALL (520) 868-7100.
- FORMERLY 504-08-002, 003, 004

N89°47'18"W 637.25
SEE MAP 504-08