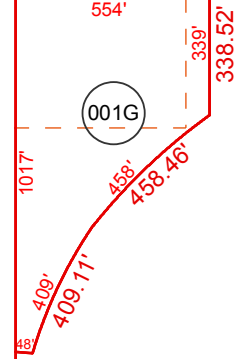


SEE MAP 503-01_1
CLAYTON RD

2641.77'

2089.00'



001G

001H

1625.42'

2642.42'

SEE MAP 503-01_1

002A

2642.67'

2642.67'

1327.81'

RUSSELL RD

001J

001D

1229.73'

2605.48'

SEE MAP 503-01_3

2641.96'

1375.71'

1375.71'

2437.49'

1280.55'

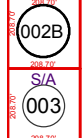
1365.85'

AZ HIGHWAY 84
SEE MAP 503-01_1

SEE MAP 503-01_1

ANDERSON RD

4864.81'

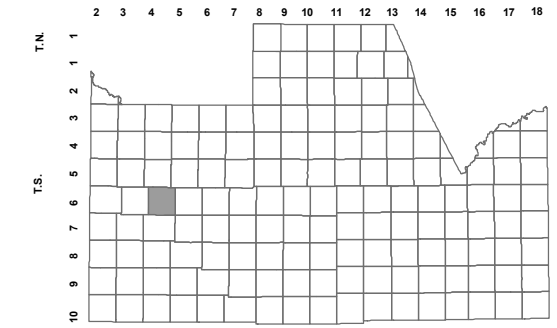


BOOK - MAP

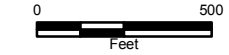
503-18

SEC. 22 T.06S. R.04E.

LOCATION MAPS
R.E.



		MILLER RD		MILLER RD	
6	5	4	3	2	1
7	8	BARNES RD	10	11	12
18	17	ANDERSON RD	KORTSEN RD	14	13
19	20	21	22	23	24
30	29	28	27	26	25
31	32	33	34	35	36
		SECTION	SELMA HWY		



Revised: 6/28/2018

By: KG



PINAL COUNTY

WIDE OPEN OPPORTUNITY

Pinal County Assessor

THIS MAP DOES NOT REPRESENT A SURVEY. NO LIABILITY IS ASSUMED FOR THE ACCURACY OF THE DATA DELINEATED HEREIN, EITHER EXPRESSED OR IMPLIED BY PINAL COUNTY OR ITS EMPLOYEES. THIS MAP IS COMPILED FROM OFFICIAL RECORDS, INCLUDING PLATS, SURVEYS, RECORDED DEEDS AND CONTRACTS, AND ONLY CONTAINS INFORMATION REQUIRED FOR THE PINAL COUNTY ASSESSOR'S OFFICE PURPOSES.