

# SEC. 16 & 17 TN.6S RG.5E

AREA CODE  
0000

SPECIAL DISTRICTS  
00000  
00000

THIS MAP IS FOR TAX PURPOSES ONLY.

THIS OFFICE WILL NOT ASSUME LIABILITY FOR REPRESENTATION, MEASUREMENTS OR ACREAGE.

THE ORIGINAL PLAT OF THIS SUBDIVISION IS ON FILE WITH THE PINAL COUNTY RECORDERS OFFICE, FOR COMPLETE INFORMATION OF PLAT AND CC&R's CALL (520) 868-7100.

# 503-63 1/2

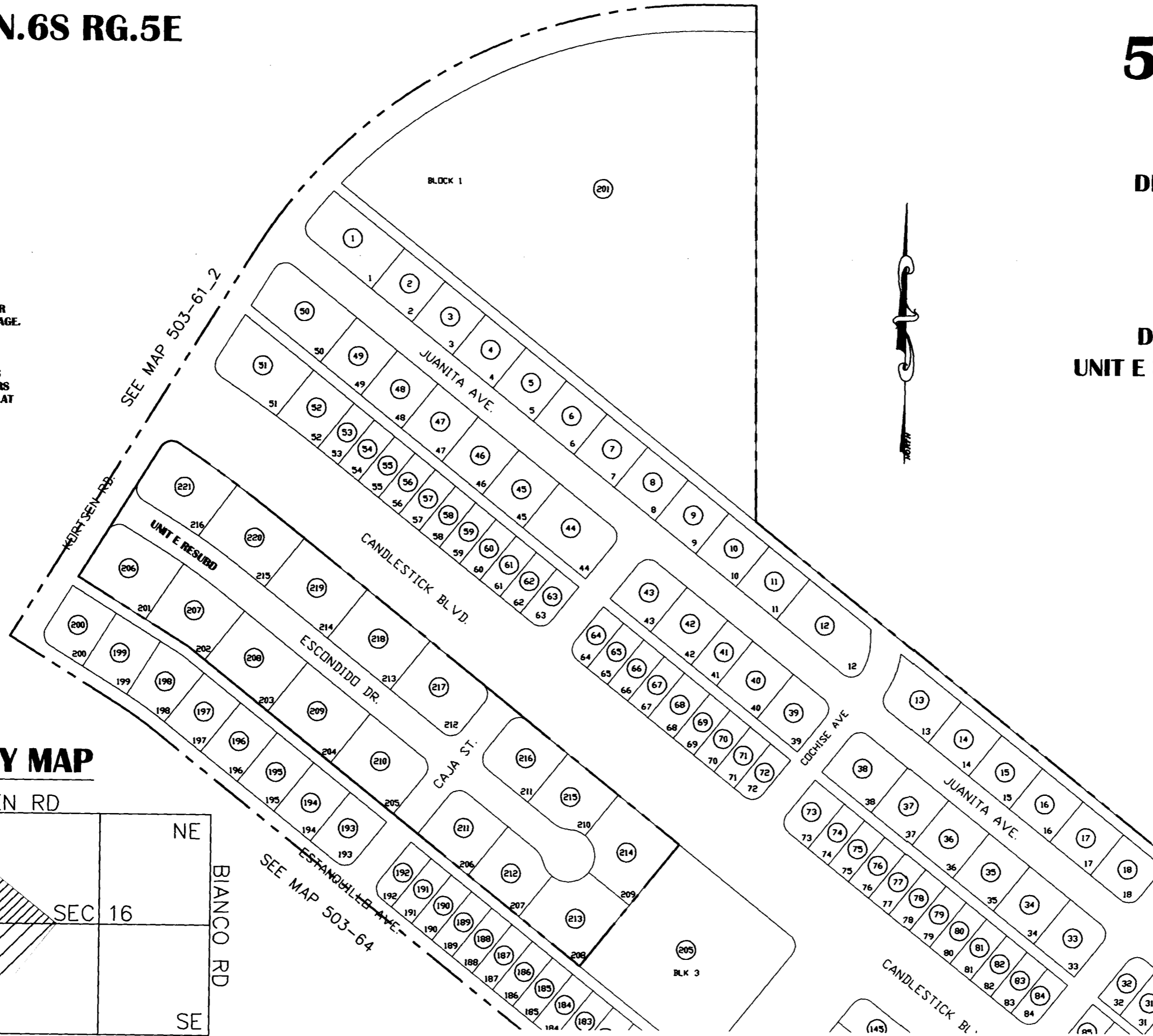
DESERT CARMEL  
UNIT E

BK 14 - PG 002

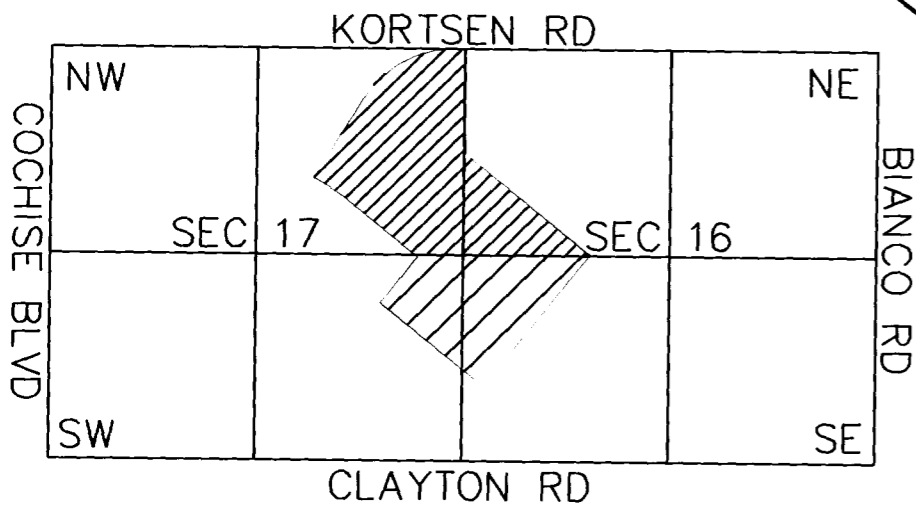
DESERT CARMEL  
UNIT E RESUBD BLK #2 & 3

BK 14 - PG 032

SEE MAP 503-64



## VICINITY MAP



SCALE: 1" = 200'

05-24-2003

SEE MAP 503-63\_2

PINAL COUNTY ASSESSORS MAP