

SEE MAP 503-48_1

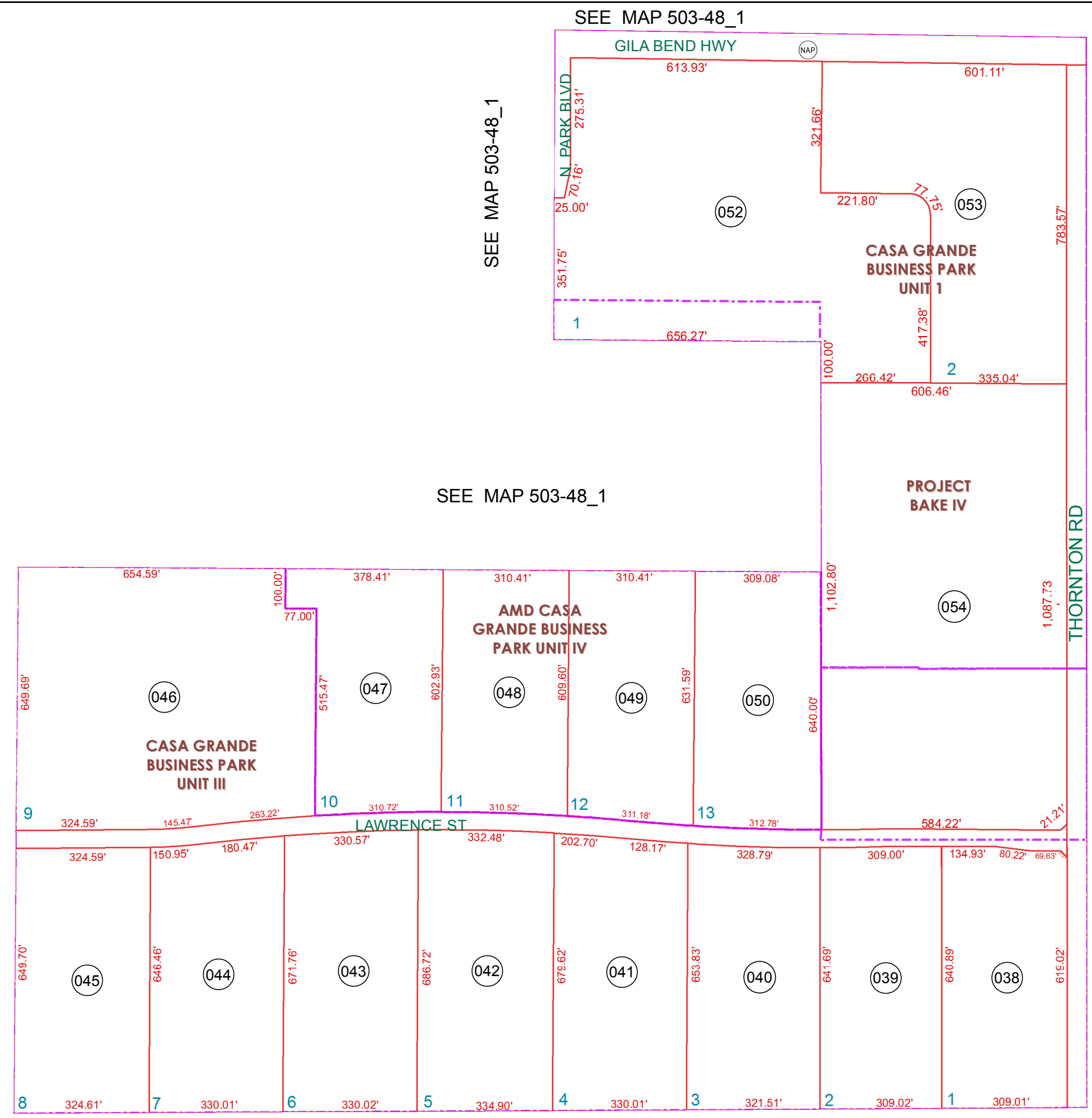
SEE MAP 503-48_1

SEE MAP 503-48_1

SEE MAP 503-48_1

SEE MAP 507-12

SEE MAP 503-48_1



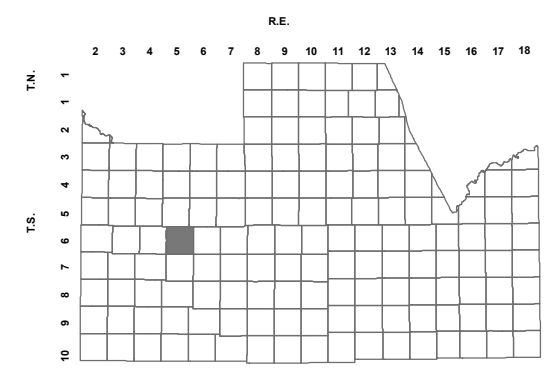
BOOK - MAP

503-89

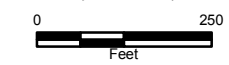
NE SEC. 25 T.06S. R.05E.

CASA GRANDE BUSINESS PARK UNIT I: CAB A - SLD 171
 CASA GRANDE BUSINESS PARK UNIT II: CAB A - SLD 198
 CASA GRANDE BUSINESS PARK UNIT III
 (A RE-SUBDIVISION OF UNIT II): CAB E - SLD 066
 CASA GRANDE BUSINESS PARK UNIT IV
 (A RE-SUBDIVISION OF PART OF UNIT III AMENDED):
 CAB F - SLD 054 CAB H SLD 092
 PROJECT BAKE IV: 2017-077791

LOCATION MAPS



| | | | | | |
|-------------|---------------|-----------------|------------------------|------------|-------------|
| MILLER RD | | | | | |
| 6 | 5 | 4 | 3 | 2 | 1 |
| RANDOLPH RD | MARICOPA RD | CASA GRANDE HWY | UNION PACIFIC RAILROAD | KORTSEN RD | |
| 7 | 8 | 9 | 10 | 11 | 12 |
| MIDWAY RD | MONTEOMERY RD | BIANCO RD | ETHINGTON RD | BURRIS RD | THORNTON RD |
| 18 | 17 | 16 | 15 | 14 | 13 |
| CLAYTON RD | HIGHWAY 84 | PETERS RD | SELMA HWY | | |
| 19 | 20 | 21 | 22 | 23 | 24 |
| 30 | 29 | 28 | 27 | 26 | 25 |
| 31 | 32 | 33 | 34 | 35 | 36 |
| SECTION | | | | | |



Revised: 12/6/2017

By: **MBG**



PINAL COUNTY

WIDE OPEN OPPORTUNITY

Pinal County Assessor

THIS MAP DOES NOT REPRESENT A SURVEY. NO LIABILITY IS ASSUMED FOR THE ACCURACY OF THE DATA DELINEATED HEREIN, EITHER EXPRESSED OR IMPLIED BY PINAL COUNTY OR ITS EMPLOYEES. THIS MAP IS COMPILED FROM OFFICIAL RECORDS, INCLUDING PLATS, SURVEYS, RECORDED DEEDS AND CONTRACTS, AND ONLY CONTAINS INFORMATION REQUIRED FOR THE PINAL COUNTY ASSESSOR'S OFFICE PURPOSES.