

SEC. 23 NE TN.5S RG.4E

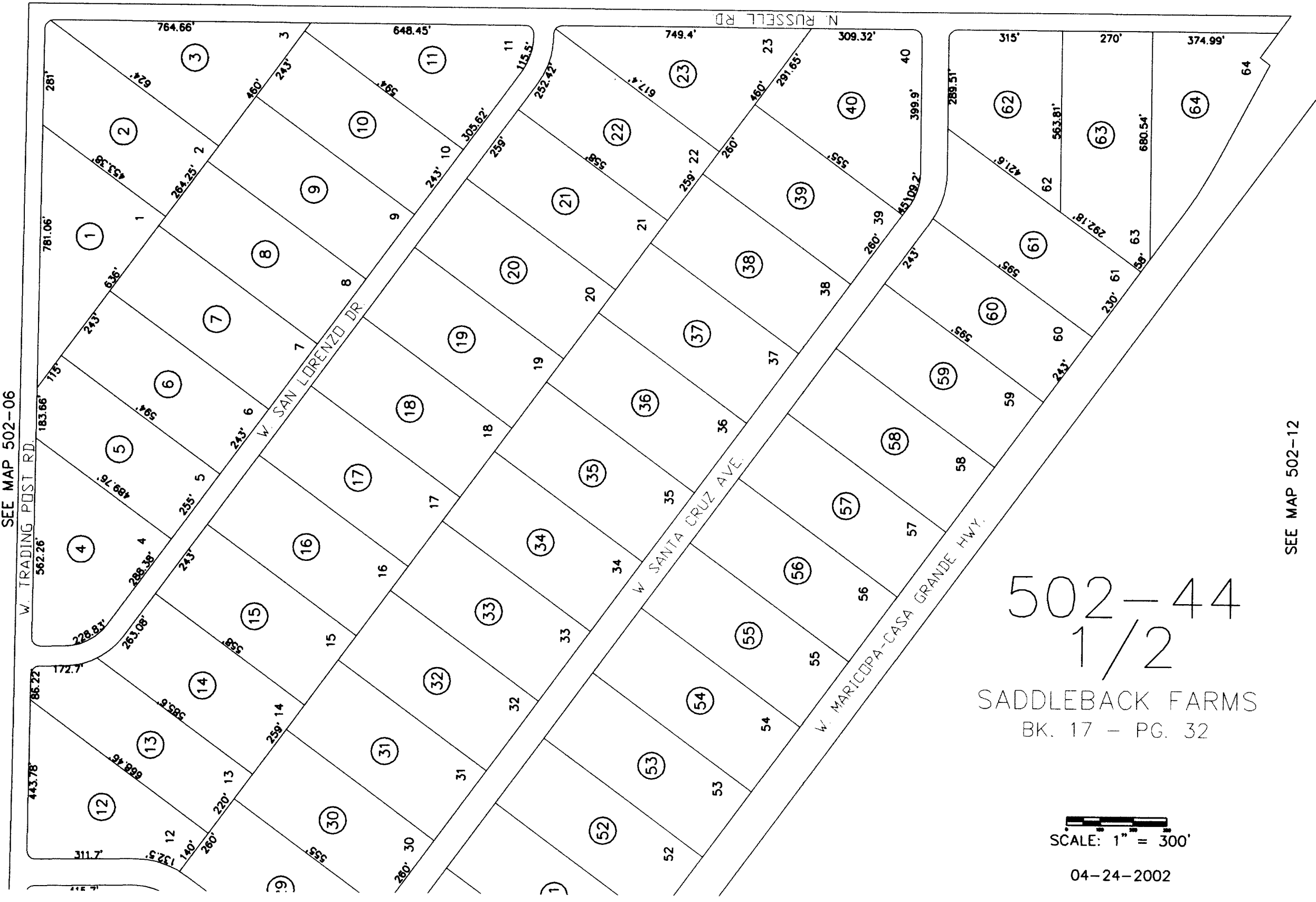
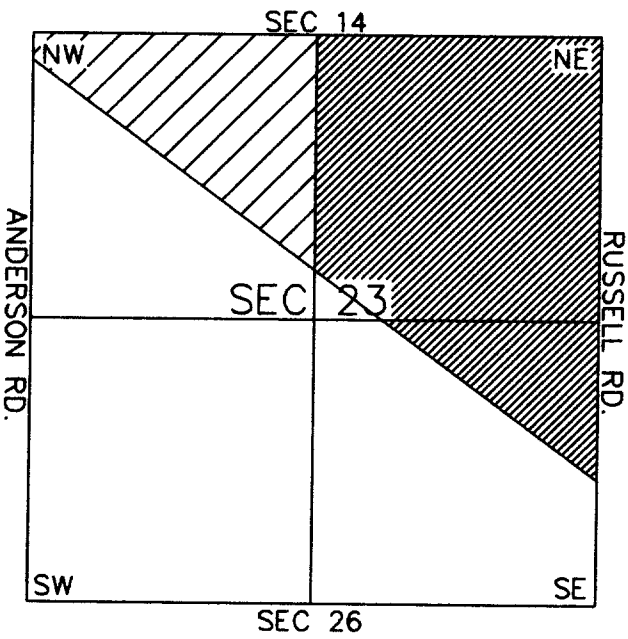
SEE MAP 502-13

AREA CODE  
0000  
SPECIAL DISTRICTS  
00000  
00000

THIS MAP IS FOR TAX PURPOSES ONLY.  
THIS OFFICE WILL NOT ASSUME LIABILITY FOR REPRESENTATION, MEASUREMENTS OR ACREAGE.  
THE ORIGINAL PLAT OF THIS SUBDIVISION IS ON FILE WITH THE PINAL COUNTY RECORDERS OFFICE, FOR COMPLETE INFORMATION OF PLAT AND CC&R's CALL (520) 868-7100.



VICINITY MAP



SEE MAP 502-44\_2

502-44  
1/2

SADDLEBACK FARMS  
BK. 17 - PG. 32

SCALE: 1" = 300'

04-24-2002

SEE MAP 502-12