

# SEC. 19 PT-SW, TN.6S RG.3E

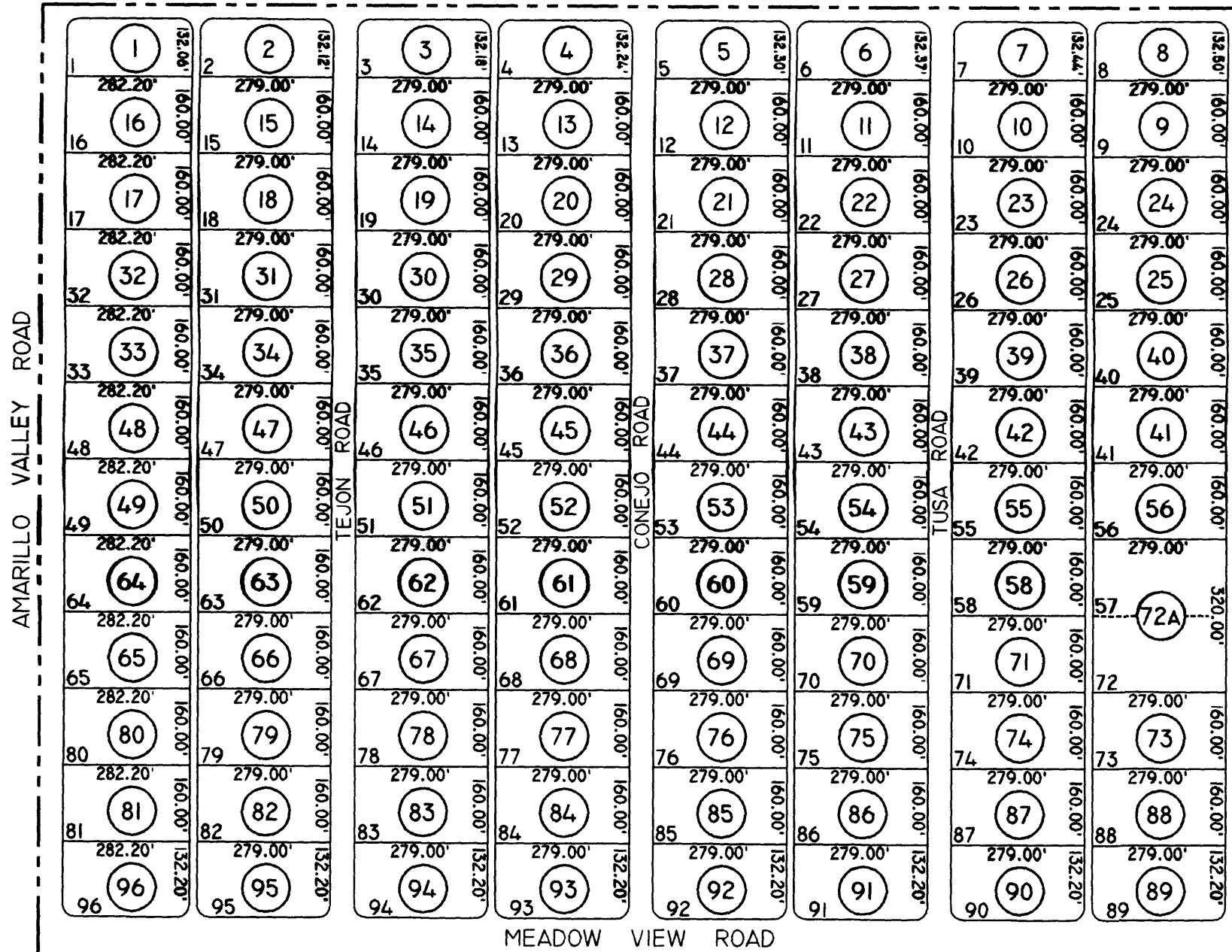
# 501-26

THIS MAP IS FOR TAX PURPOSES ONLY.  
THIS OFFICE WILL NOT ASSUME LIABILITY FOR  
REPRESENTATION, MEASUREMENTS OR ACREAGE.

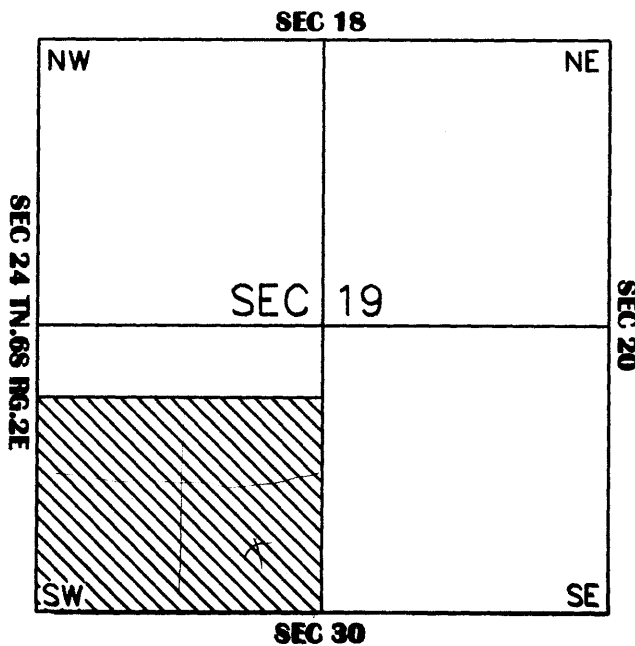
THE ORIGINAL PLAT OF THIS SUBDIVISION IS  
ON FILE WITH THE PINAL COUNTY RECORDERS  
OFFICE, FOR COMPLETE INFORMATION OF PLAT  
AND CC&R'S CALL (520) 868-7100.

SEE MAP 501-25

JAVELINA ROAD



## VICINITY MAP



## HIDDEN VALLEY ESTATES UNIT 6 BK.09 - PG.53

SEE MAP 501-25



SCALE: 1" = 300'

5-30-2001