

SEC. 08 SE, TN.6S RG.3E

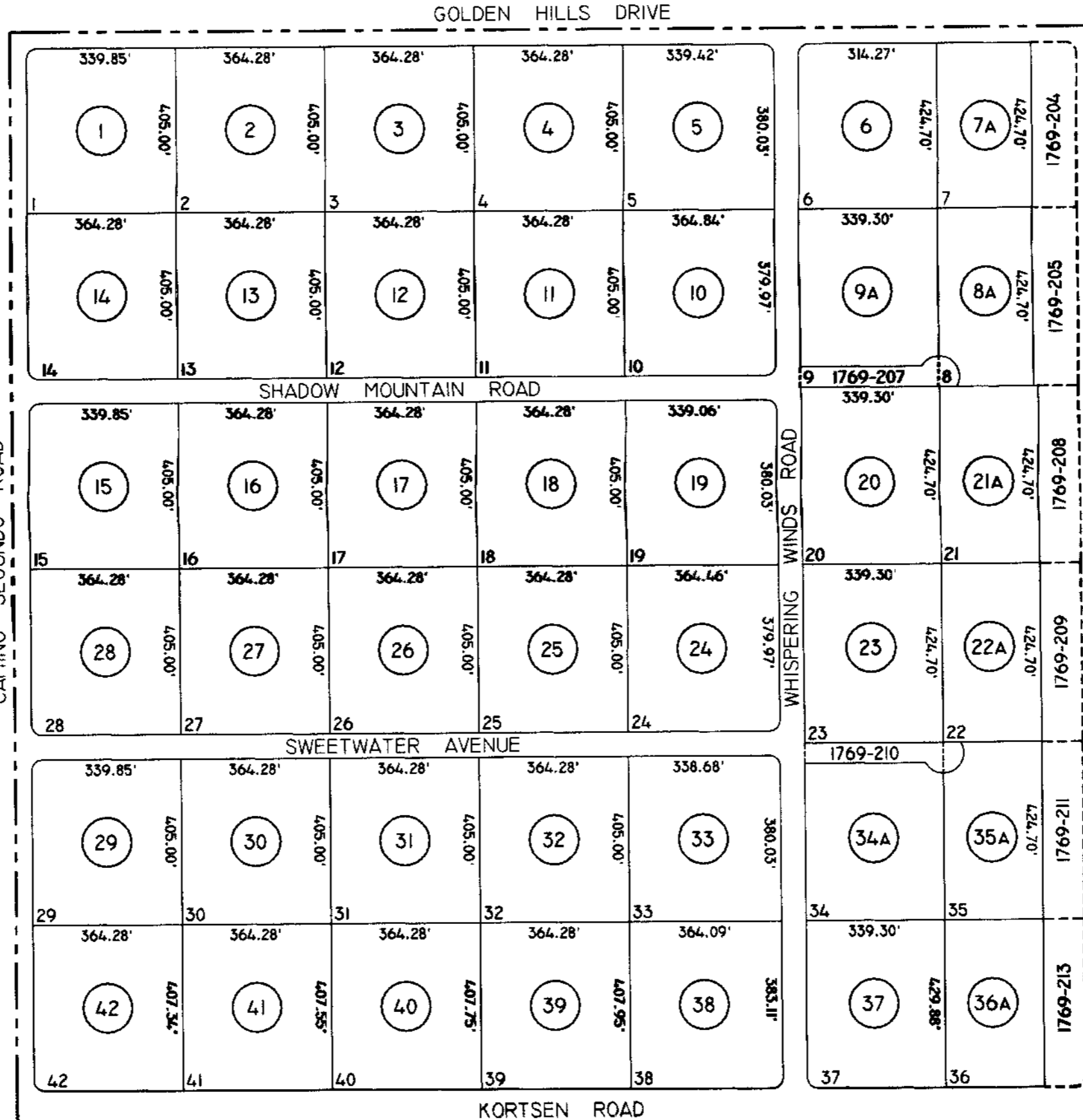
SEE MAP 501-20

501-52 1/2

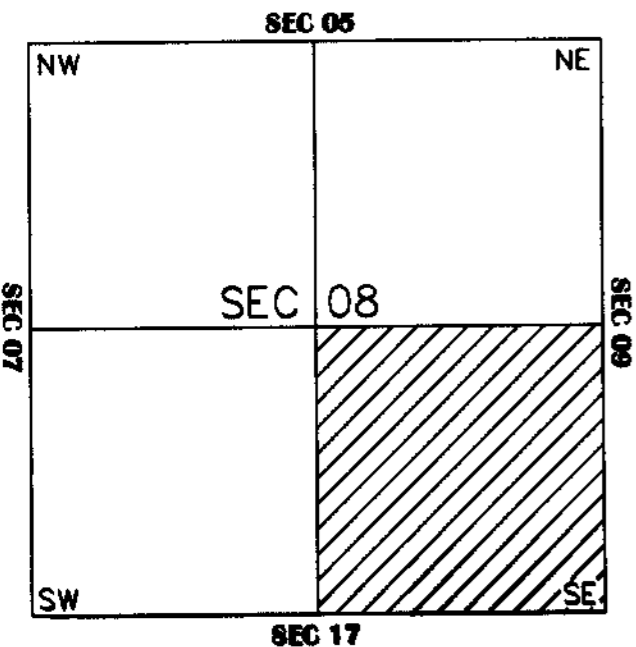
THIS MAP IS FOR TAX PURPOSES ONLY.
THIS OFFICE WILL NOT ASSUME LIABILITY FOR
REPRESENTATION, MEASUREMENTS OR ACREAGE.

THE ORIGINAL PLAT OF THIS SUBDIVISION IS
ON FILE WITH THE PINAL COUNTY RECORDERS
OFFICE, FOR COMPLETE INFORMATION OF PLAT
AND CARR'S CALL (520) 868-7100.

CLEARWATER FARMS BK.16 - PG.28



VICINITY MAP



SEE MAP 501-15



SCALE: 1" = 300'

5-30-2001