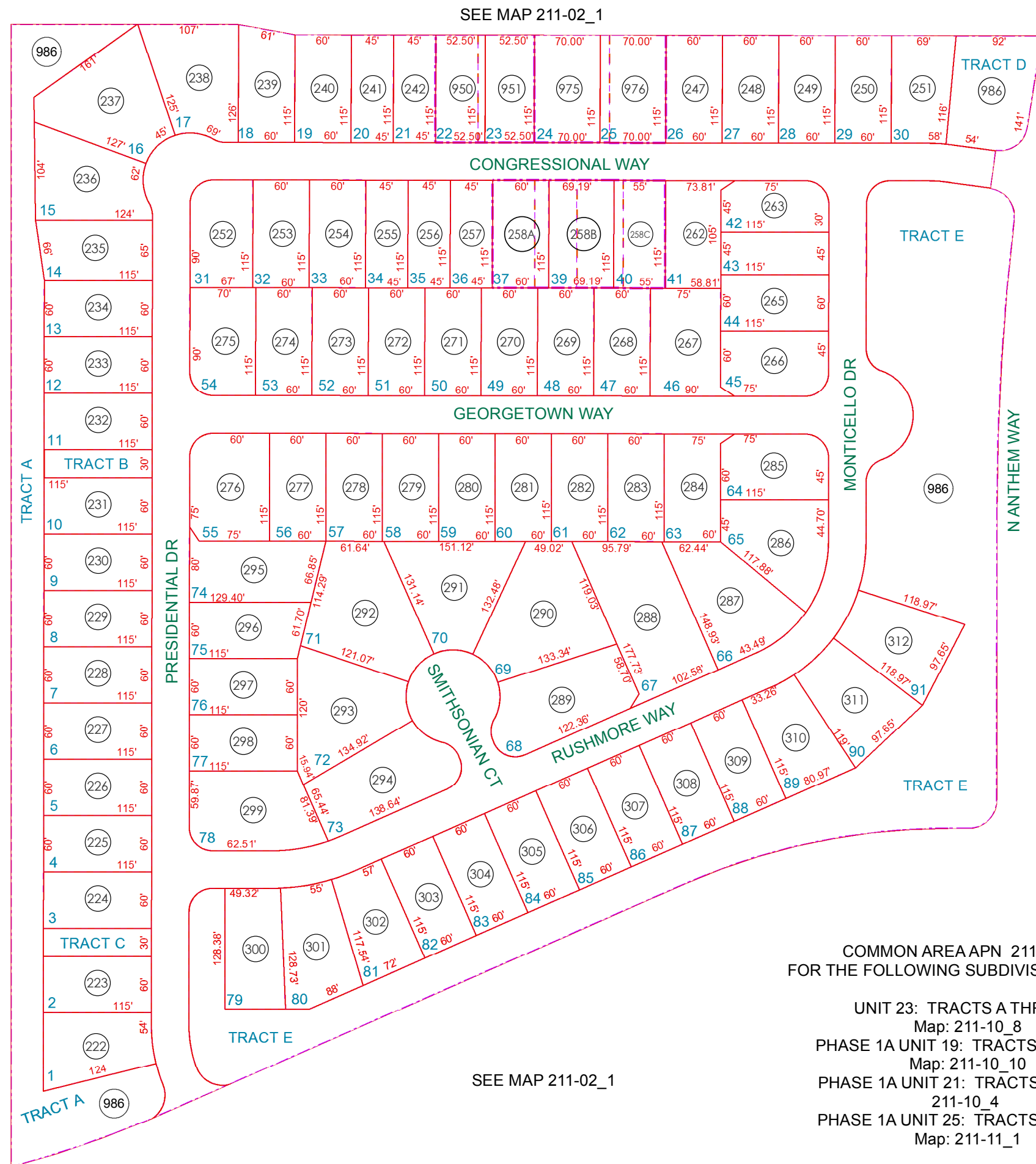


SEE MAP 211-02_1



SEE MAP 211-02_1

CONGRESSIONAL WAY

GEORGETOWN WAY

RUSHMORE WAY

SMITHSONAN CT

MONTICELLO DR

NANTHEM WAY

PRESIDENTIAL DR

TRACT A

TRACT B

TRACT C

TRACT A

TRACT D

TRACT E

TRACT E

TRACT E

SEE MAP 211-02_1

SEE MAP 211-02_1

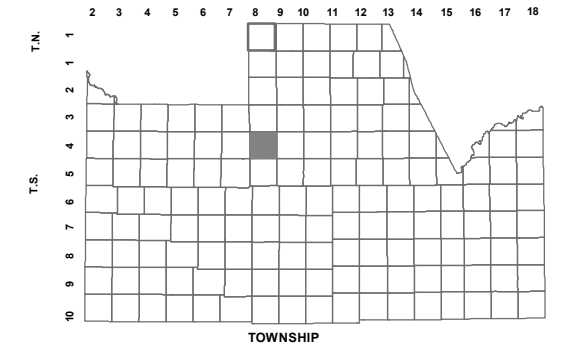
COMMON AREA APN 211-10-986
FOR THE FOLLOWING SUBDIVISION TRACTS:

- UNIT 23: TRACTS A THRU G
Map: 211-10_8
- PHASE 1A UNIT 19: TRACTS A THRU E
Map: 211-10_10
- PHASE 1A UNIT 21: TRACTS A THRU E
211-10_4
- PHASE 1A UNIT 25: TRACTS A THRU H
Map: 211-11_1

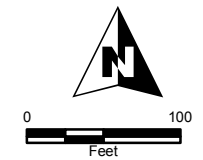
BOOK - MAP

211-10_4

NE SEC. 25 T.04S. R.08E.
ANTHEM AT MERRILL RANCH PHASE 1A - UNIT 21:
CAB F - SLD 152
RE-SUBVISION OF LOTS 37 - 40:
CAB G - SLD 186
LETTER OF CORRECTION FOR LOTS 22 & 23:
2012-096428
PLAT CORRECTION FOR LOTS 24 & 25:
2013-002223
 LOCATION MAPS
 R.E.



TOWNSHIP					
6	5	4	3	2	1
7	8	9	10	11	12
18	17	16	15	14	13
19	20	21	22	23	24
30	29	28	27	26	25
31	32	33	34	35	36
SECTION					



Revised: 4/18/2017

By: YL



PINAL COUNTY
wide open opportunity

Pinal County Assessor

THIS MAP DOES NOT REPRESENT A SURVEY. NO LIABILITY IS ASSUMED FOR THE ACCURACY OF THE DATA DELINEATED HEREIN, EITHER EXPRESSED OR IMPLIED BY PINAL COUNTY OR ITS EMPLOYEES. THIS MAP IS COMPILED FROM OFFICIAL RECORDS, INCLUDING PLATS, SURVEYS, RECORDED DEEDS AND CONTRACTS, AND ONLY CONTAINS INFORMATION REQUIRED FOR THE PINAL COUNTY ASSESSOR'S OFFICE PURPOSES.