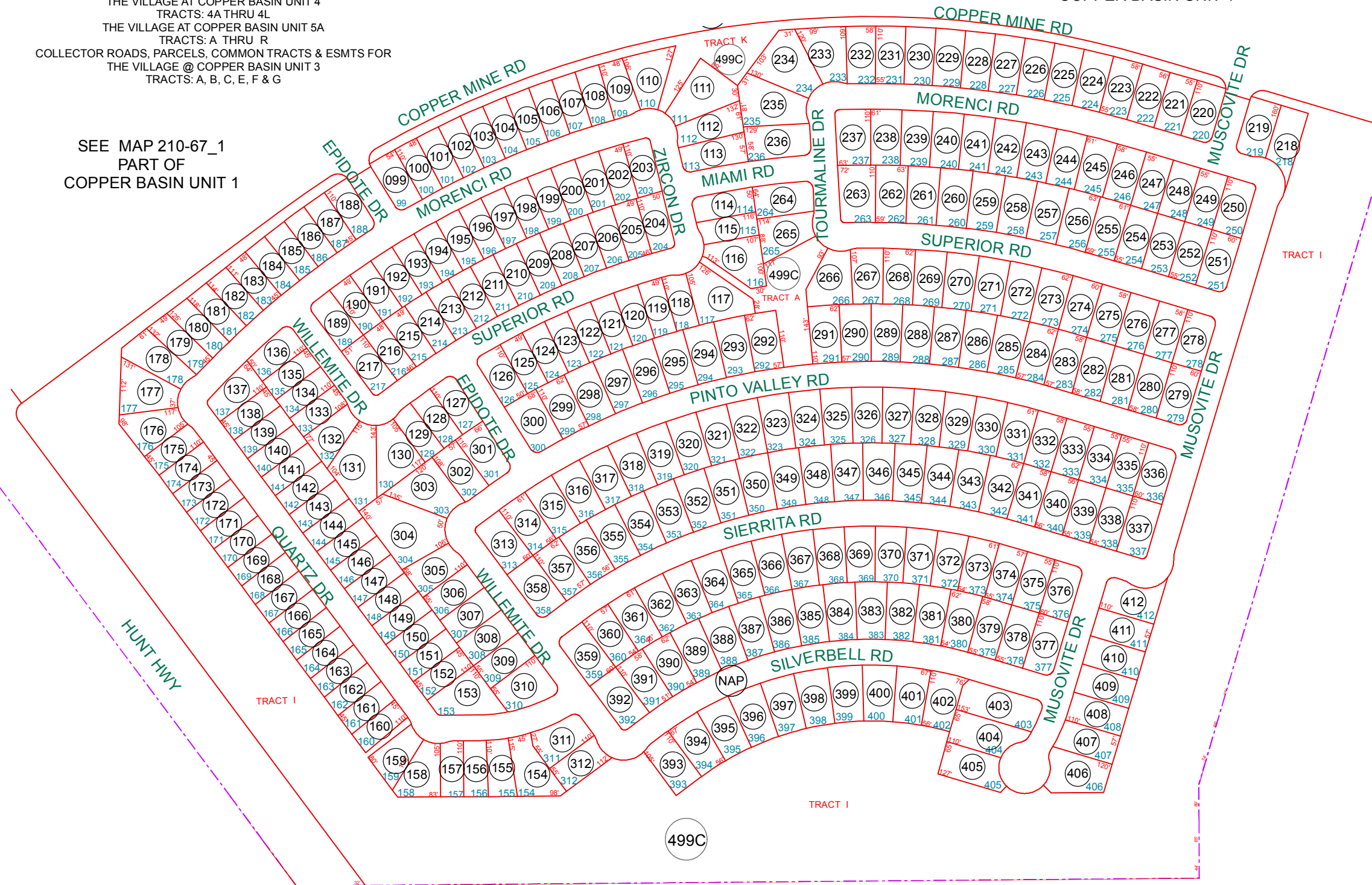


COMMON AREA PARCEL 210-67-499C  
 COPPER BASIN UNIT ONE  
 TRACTS: A, B, C, E, F, G, H, I, J & K  
 THE VILLAGE AT COPPER BASIN UNIT 2  
 TRACTS: A & B  
 THE VILLAGE AT COPPER BASIN UNIT 3A  
 TRACTS: A THRU T  
 THE VILLAGE AT COPPER BASIN UNIT 3B  
 TRACTS: A THRU M  
 THE VILLAGE AT COPPER BASIN UNIT 4  
 TRACTS: 4A THRU 4L  
 THE VILLAGE AT COPPER BASIN UNIT 5A  
 TRACTS: A THRU R  
 COLLECTOR ROADS, PARCELS, COMMON TRACTS & ESMTS FOR  
 THE VILLAGE @ COPPER BASIN UNIT 3  
 TRACTS: A, B, C, E, F & G

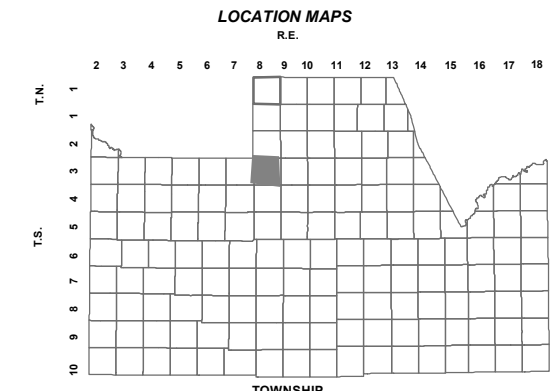
SEE MAP 210-67\_1  
 PART OF  
 COPPER BASIN UNIT 1

SEE MAP 210-67\_2  
 PART OF  
 COPPER BASIN UNIT 1



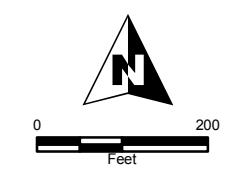
SEE MAP 210-31

BOOK - MAP  
**210-67\_3**  
 SEC. 28 T.03S. R.08E.  
 COPPER BASIN UNIT 1  
 CABINET D - SLIDE 55



6	5	4	3	2	1
7	8	9	10	11	12
18	17	16	15	14	13
19	20	21	22	23	24
30	29	28	27	26	25
31	32	33	34	35	36

SECTION



Revised: 6/15/2012  
 By: YL



PINAL COUNTY  
*wide open opportunity*

**Pinal County Assessor**

THIS MAP DOES NOT REPRESENT A SURVEY. NO LIABILITY IS ASSUMED FOR THE ACCURACY OF THE DATA DELINEATED HEREIN, EITHER EXPRESSED OR IMPLIED BY PINAL COUNTY OR ITS EMPLOYEES. THIS MAP IS COMPILED FROM OFFICIAL RECORDS, INCLUDING PLATS, SURVEYS, RECORDED DEEDS AND CONTRACTS, AND ONLY CONTAINS INFORMATION REQUIRED FOR THE PINAL COUNTY ASSESSOR'S OFFICE PURPOSES.