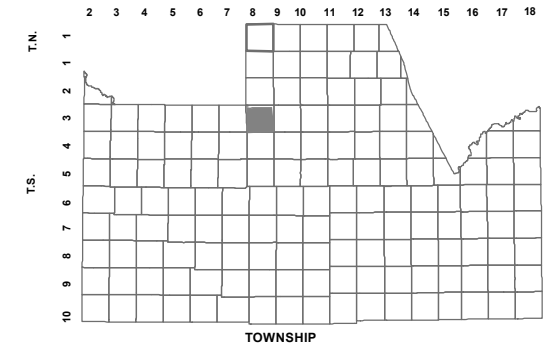


210-67_4

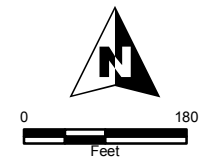
SEC. 28 T.03S. R.08E.
THE VILLAGE AT COPPER BASIN
UNIT 2
CABINET D - SLIDE 117

LOCATION MAPS
R.E.



6	5	4	3	2	1
7	8	9	10	11	12
18	17	16	15	14	13
19	20	21	22	23	24
30	29	28	27	26	25
31	32	33	34	35	36

SECTION



Revised: 6/15/2012

By: YL

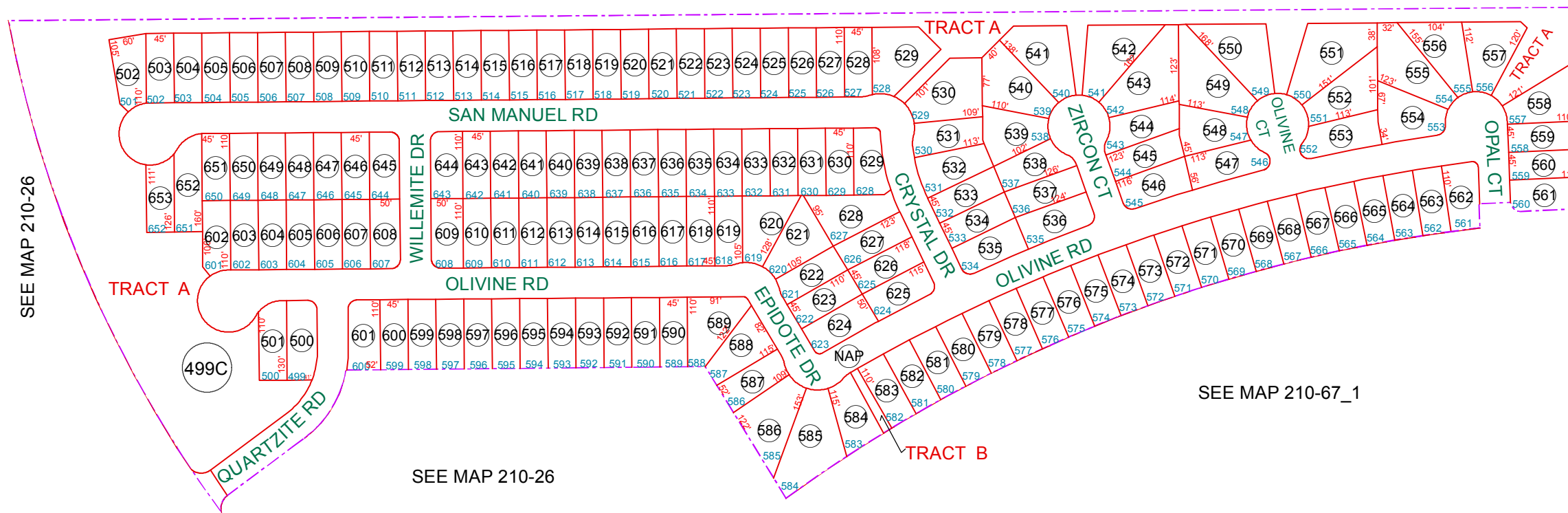


PINAL COUNTY
wide open opportunity

Pinal County Assessor

THIS MAP DOES NOT REPRESENT A SURVEY. NO LIABILITY IS ASSUMED FOR THE ACCURACY OF THE DATA DELINEATED HEREIN, EITHER EXPRESSED OR IMPLIED BY PINAL COUNTY OR ITS EMPLOYEES. THIS MAP IS COMPILED FROM OFFICIAL RECORDS, INCLUDING PLATS, SURVEYS, RECORDED DEEDS AND CONTRACTS, AND ONLY CONTAINS INFORMATION REQUIRED FOR THE PINAL COUNTY ASSESSOR'S OFFICE PURPOSES.

SEE MAP 210-26



SEE MAP 210-26

SEE MAP 210-67_1

SEE MAP 210-26

COMMON AREA PARCEL 210-67-499C
 COPPER BASIN UNIT ONE
 TRACTS: A, B, C, E, F, G, H, I, J & K
 THE VILLAGE AT COPPER BASIN UNIT 2
 TRACTS: A & B
 THE VILLAGE AT COPPER BASIN UNIT 3A
 TRACTS: A THRU T
 THE VILLAGE AT COPPER BASIN UNIT 3B
 TRACTS: A THRU M
 THE VILLAGE AT COPPER BASIN UNIT 4
 TRACTS: 4A THRU 4L
 THE VILLAGE AT COPPER BASIN UNIT 5A
 TRACTS: A THRU R
 COLLECTOR ROADS, PARCELS, COMMON TRACTS & ESMTS FOR
 THE VILLAGE @ COPPER BASIN UNIT 3
 TRACTS: A, B, C, E, F & G