

COMMON AREA 210-76-337A INCLUDES:
 JOHNSON RANCH HOA PARCEL 7
 RECREATION CTR @ NW CORNER JR BLVD &
 GOLF CLUB DR &
 JOHNSON RANCH HOA PARCELS 5 & 6
 WALGREEN'S @ NW CORNER OF HUNT HWY &
 GOLF CLUB DR: TRACTS A, B & C
 JOHNSON RANCH UNIT 16 TRACTS: A THRU D
 JOHNSON RANCH UNIT 17 TRACTS: A THRU F
 JOHNSON RANCH UNIT 18 TRACTS: A THRU G
 JOHNSON RANCH UNIT 20/21 TRACTS: A THRU P
 EXCEPT A PORTION OF TRACT A DEDICATED TO PUBLIC
 IN REPLAT, CAB G SLIDE 101 &
 THAT PORTION OF JOHNSON RANCH 20/21 HOA PARCEL 2
 JOHNSON RANCH UNIT 22A TRACTS: A THRU D
 JOHNSON RANCH UNIT 22B TRACTS: A THRU C
 JOHNSON RANCH UNIT 23A TRACTS: A THRU D
 JOHNSON RANCH UNIT 23B TRACTS: A THRU E
 JOHNSON RANCH UNIT 28 TRACTS: A THRU D
 JOHNSON RANCH UNIT 29 TRACTS: A THRU E

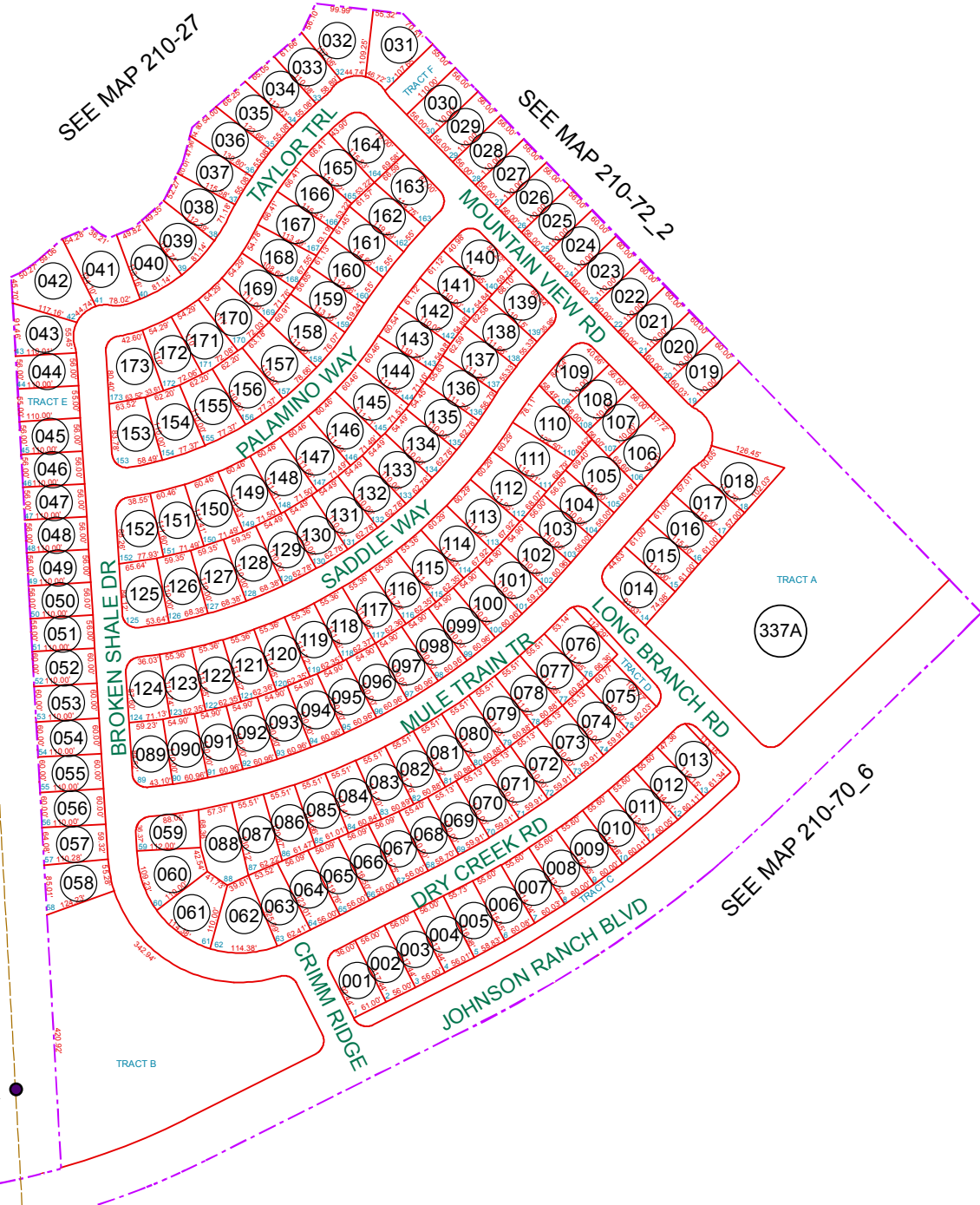
● NW COR

SECTION 30
 SECTION 29

SEE MAP 210-72_3

● W4 COR

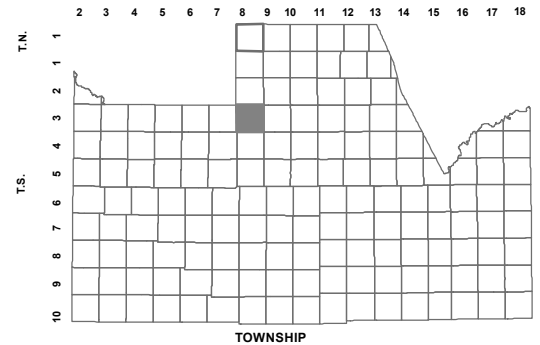
SEE MAP 210-76_4



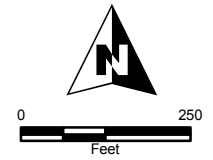
BOOK - MAP
210-72_1
 SEC. 29 T.03S. R.08E.

JOHNSON RANCH UNIT 17: CAB D - SLD 128

LOCATION MAPS
 R.E.



6	5	4	3	2	1
7	8	9	10	11	12
18	17	16	15	14	13
19	20	21	22	23	24
30	29	28	27	26	25
31	32	33	34	35	36



Revised: 7/31/2014

By: MBG



PINAL COUNTY
wide open opportunity

Pinal County Assessor

THIS MAP DOES NOT REPRESENT A SURVEY. NO LIABILITY IS ASSUMED FOR THE ACCURACY OF THE DATA DELINEATED HEREIN, EITHER EXPRESSED OR IMPLIED BY PINAL COUNTY OR ITS EMPLOYEES. THIS MAP IS COMPILED FROM OFFICIAL RECORDS, INCLUDING PLATS, SURVEYS, RECORDED DEEDS AND CONTRACTS, AND ONLY CONTAINS INFORMATION REQUIRED FOR THE PINAL COUNTY ASSESSOR'S OFFICE PURPOSES.