

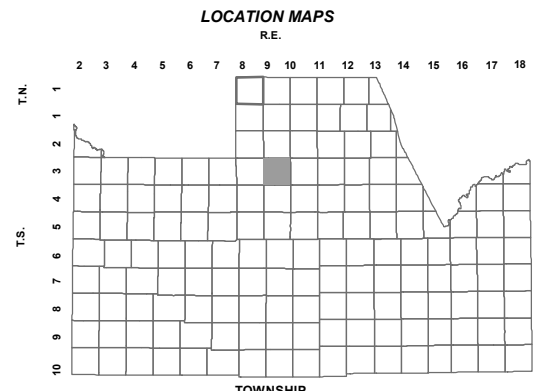
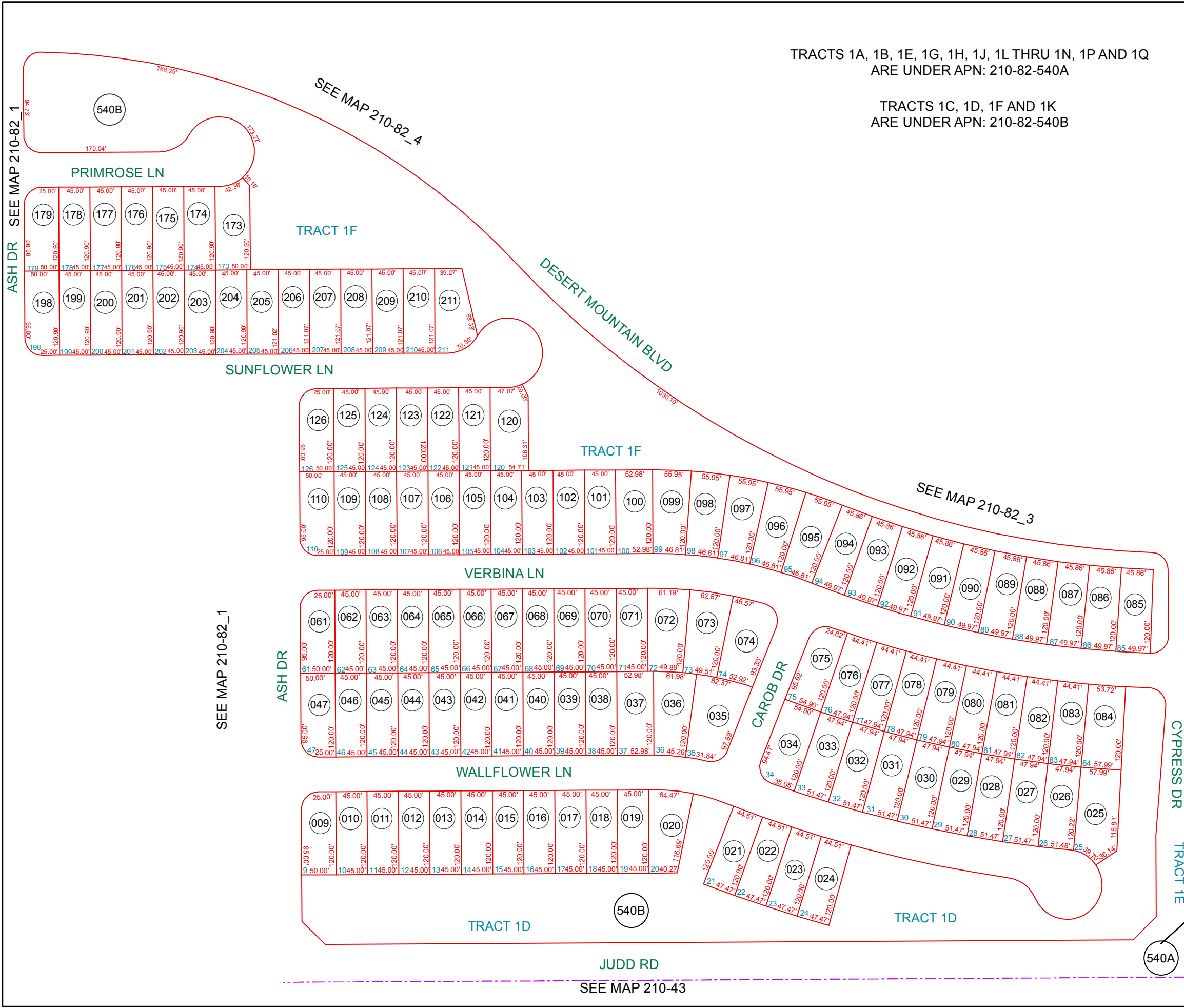
# 210-82\_2

SE SW SEC. 21 T.03S. R.09E.

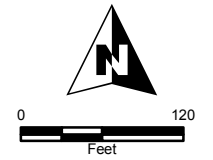
MAGMA RANCH II - UNIT 1: CAB F - SLD 192

TRACTS 1A, 1B, 1E, 1G, 1H, 1J, 1L THRU 1N, 1P AND 1Q  
ARE UNDER APN: 210-82-540A

TRACTS 1C, 1D, 1F AND 1K  
ARE UNDER APN: 210-82-540B



6	5	4	3	2	1
7	8	9	10	11	12
18	17	16	15	14	13
19	20	21	22	23	24
30	29	28	27	26	25
31	32	33	34	35	36



Revised: 10/13/2015

By: MBG



PINAL COUNTY  
*wide open opportunity*

**Pinal County Assessor**

THIS MAP DOES NOT REPRESENT A SURVEY. NO LIABILITY IS ASSUMED FOR THE ACCURACY OF THE DATA DELINEATED HEREIN, EITHER EXPRESSED OR IMPLIED BY PINAL COUNTY OR ITS EMPLOYEES. THIS MAP IS COMPILED FROM OFFICIAL RECORDS, INCLUDING PLATS, SURVEYS, RECORDED DEEDS AND CONTRACTS, AND ONLY CONTAINS INFORMATION REQUIRED FOR THE PINAL COUNTY ASSESSOR'S OFFICE PURPOSES.

SEE MAP 210-82\_1

SEE MAP 210-82\_1

SEE MAP 210-82\_4

SEE MAP 210-82\_3

SEE MAP 210-83\_1

SEE MAP 210-43